

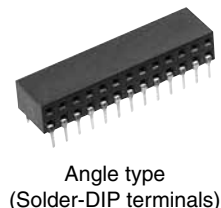
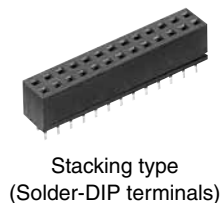


Discontinued as of September 30, 2010

Panasonic
ideas for life

FOR PC BOARD
TO PC BOARD

**BB SOCKETS
(AXB1)**



FEATURES

1. Low profile type

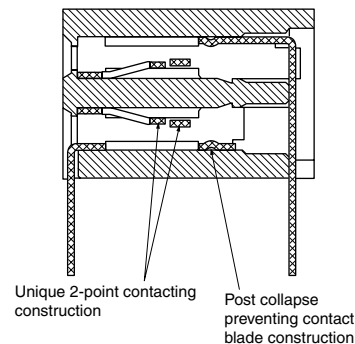
By means of the straight type and AXL low-profile header (open type) 2.54mm combination as a stacking type with a height of 10.1mm, the lowest profile is possible for a dense piling.

APPLICATIONS



- Communication equipment
- Measuring equipment
- Factory automation related equipment

CONSTRUCTION



Compliance with RoHS Directive

ORDERING INFORMATION

	AXB	1				0	1
1: BB socket							
<No. of contacts (2 digits)>							
10: 10 contacts	14: 14 contacts	16: 16 contacts					
20: 20 contacts	26: 26 contacts	30: 30 contacts					
34: 34 contacts	40: 40 contacts	50: 50 contacts					
60: 60 contacts	64: 64 contacts						
<Type>							
0: Straight type							
1: Angle type							
<Terminal shape>							
0: DIP terminal							
<Surface treatment (Contact portion/Terminal portion)>							
1: Au plating/Sn plating							



Discontinued as of September 30, 2010

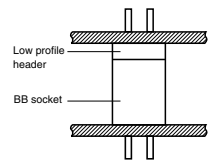
(AXB1)

HOW TO USE

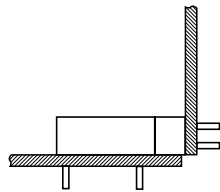
• Socket combination

Low-profile header (Open type)

• Mating condition



Stacking type
(Solder-DIP terminals)



Angle type
(Solder-DIP terminals)

PRODUCT TYPES

1. Stacking type (Straight type)

No. of contacts	Solder-dip terminals	Packing	
	Part No.	Inner carton	Outer carton
10	AXB110001	—	200 pcs
14	AXB114001		
16	AXB116001		
20	AXB120001		
26	AXB126001		
30	AXB130001		
34	AXB134001		
40	AXB140001		
50	AXB150001		
60	AXB160001		
64	AXB164001		

2. Angle type

No. of contacts	Solder-dip terminals	Packing	
	Part No.	Inner carton	Outer carton
10	AXB110101	—	200 pcs
14	AXB114101		
16	AXB116101		
20	AXB120101		
26	AXB126101		
30	AXB130101		
34	AXB134101		
40	AXB140101		
50	AXB150101		
60	AXB160101		
64	AXB164101		

Special Order

In addition to standard number of contacts, 6 to 62 contacts compatibility is possible.
Note) For the available foreign standard products, refer to "STANDARDS CHART" on the end of the catalog.

2. Accessory

Name	Part No.	Packing	
		Inner carton	Outer carton
Incorrect insertion prevention key	AXB8001	50 pcs	200 pcs

SPECIFICATIONS

1. Characteristics

Item		Specifications	Conditions
Electrical characteristics	Rated current	2A	
	Rated voltage	250V AC	
	Breakdown voltage	1,000 V AC for 1 min.	Detection current: 1mA
	Insulation resistance	Min. 1,000MΩ	At 500V DC megger
	Contact resistance	Max. 20mΩ	Measured based on the HP4338B measurement method of JIS C 5402
Mechanical characteristics	Unit insertion force	Max. 5.88N {600gf}/2 contacts	Measured by steel gauge: 0.64±0.01mm square
	Unit removal force	Min. 0.392N {40gf}/2 contacts	Measured by steel gauge: 0.64±0.01mm square
Lifetime characteristics	Insertion and removal life	500 times	
Environmental characteristics	Ambient temperature	−55°C to +105°C	Max. 85% R.H. Not freezing at low temperature

2. Material and surface treatment

Part name	Material	Surface
Molded portion	Glass reinforced PET (UL94V-0)	—
Contact	Copper alloy	Contact portion: Ni plating on base, Au plating on surface Terminal portion: Ni plating on base, Sn plating on surface

Note: Please consult us for different plating requirements.

3. Applicable PC board

Thickness	1.6mm for Solder-dip type
-----------	---------------------------

(AXB1)

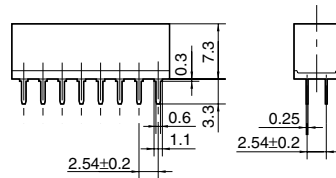
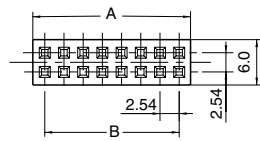
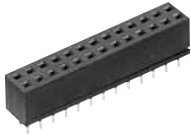


Discontinued as of September 30, 2010

DIMENSIONS (Unit: mm)

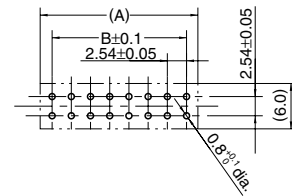
- Stacking type
- Solder-dip terminals

CAD Data



General tolerance: ± 0.3

Recommended PC board pattern (Bottom view)

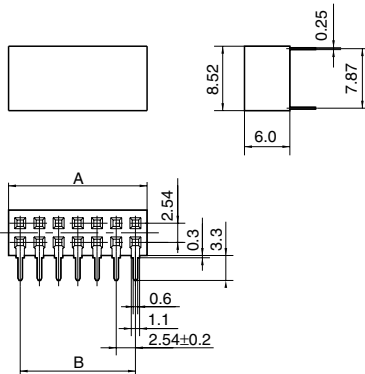
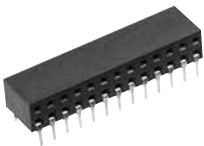


Dimension table (mm)

No. of contacts	A	B
10	13.24	10.16
14	18.32	15.24
16	20.86	17.78
20	25.86	22.86
26	33.56	30.48
30	38.64	35.56
34	43.64	40.64
40	51.34	48.26
50	63.96	60.96
60	76.74	73.66
64	81.74	78.74

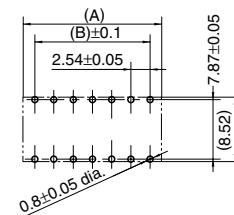
- Angle type
- Solder-dip terminals

CAD Data



General tolerance: ± 0.3

Recommended PC board pattern (Bottom view)



Dimension table (mm)

No. of contacts	A
10	13.24
14	18.32
16	20.86
20	25.86
26	33.56
30	38.64
34	43.64
40	51.34
50	63.96
60	76.74
64	81.74



NOTES

1. Regarding printed circuit board design

Terminal numbers are not indicated on the connector. Confirm the socket terminal direction when carrying out the printed circuit board design.

2. Regarding handling of terminals

Repeated bending of the terminals can cause breakage. Take extra care when handling.

3. Regarding soldering operations

Rosin type flux should be used. For the dip method of soldering, the following conditions should be used.

260°C Within 10 seconds

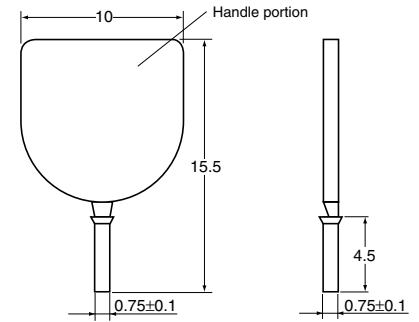
300°C Within 5 seconds

350°C Within 3 seconds

4. Regarding prevention of incorrect insertion

For the prevention of incorrect insertion of similarly appearing printed circuit board blocks, the following procedure should be carried out.

- 1) Insert the incorrect insertion prevention key (AXB8001) in a black terminal of the socket, and break away the handle portion.
- 2) Remove the post corresponding to that terminal from the socket of the header. When the multiple contacts connectors such as 34 contacts type are used, it is recommended that one incorrect insertion prevention key be placed near the end of each side for improving the safety of the circuit protection against incorrect insertion.



Note: Although AXM8002 is printed on the handle-portion, the shape is different from AXM8002.

For other details, please verify with the product specification sheets.