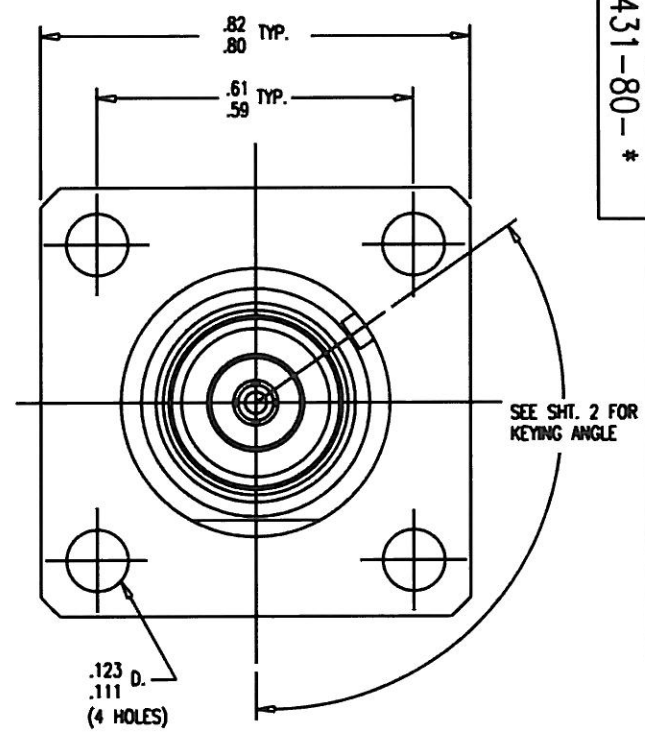
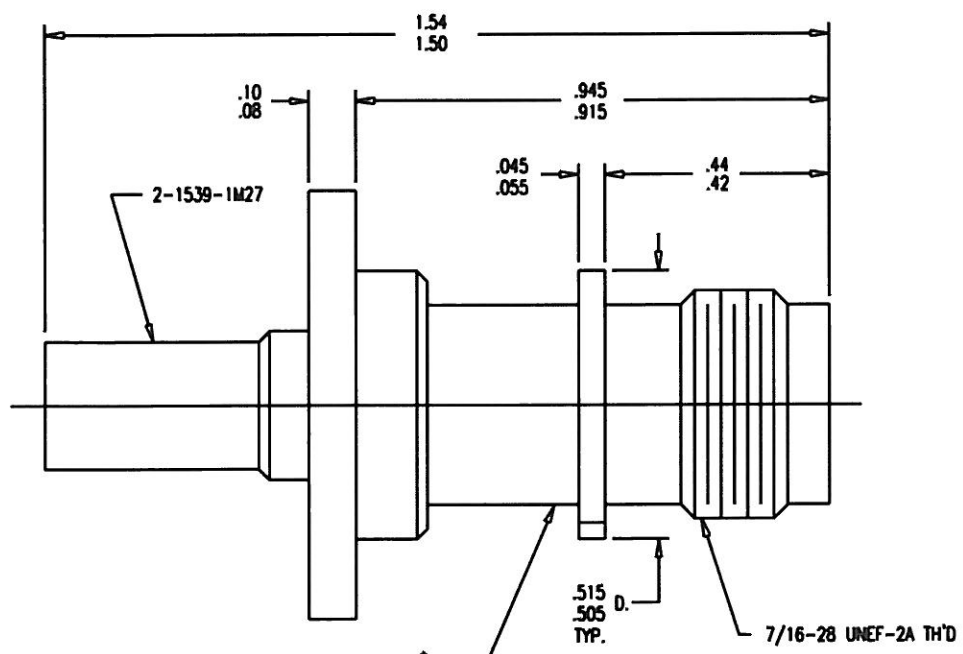


GSD

2431-80-*



STAMP: KINGS 2431-80- *
SEE SHEET 2

- NOTES:
1. FOR USE WITH BOEING S280W503-2 & ADAMS RUSSELL FC14Z CABLE.
 2. FOR CABLING INSTRUCTIONS SEE 3-546-1.
 3. FOR CRIMPING USE DIE KTH-2161.
 4. INTERFACE PER MIL-STD-348, FIG. 313-2.
 5. FOR USE WITH .075 MAX. PANEL.
 6. CENTER CONTACT (1-5671-3M49) SUPPLIED UNASSEMBLED.
 7. MARK PACKAGE: KINGS 2431-80- *
XXXX (DATE CODE) SEE SHEET 2
 8. MATERIALS:
INSULATORS-TEFLON, ASTM-D-1457
K-GRIP SLEEVE-COMMERCIAL BRONZE, ALLOY 220
CENTER CONTACT F-BER. COP., ASTM-B-196
ALL OTHER METAL PARTS-BRASS, ASTM-B16
 9. FINISHES:
CENTER CONTACT-GOLD PLATE PER MIL-G-45204
ALL OTHER METAL PARTS-KINGS TARNISH RESISTANT FINISH (TR-5)
 10. ELECTRICAL CHARACTERISTICS:
NOMINAL IMPEDANCE-50 OHMS
FREQUENCY RANGE-DC TO 11 GHz
WORKING VOLTAGE-500 VRMS

| REVISIONS | |
|-----------|-------------------------|
| ISSUE | CHANGES |
| 0 | ER 34028 KH 08/06/92 |

KAM2136

| | |
|-------------------------|---------------|
| SCALE 4:1 | |
| APPROX SURFACE AREA | |
| WAS: E-17386 | |
| USED ON | |
| REF: BOEING | |
| JACK, PANEL, KEYED, TNC | |
| DRAWN KH | DATE 07/17/92 |
| DESIGN JT | DATE 07/21/92 |
| APPR. | DATE |

KINGS
ELECTRONICS CO., INC.
TUCUMPHOE, NEW YORK 10707

2431-80-*

GSD

| KINGS PART NO. | KEYING ANGLE |
|----------------|--------------|
| 2431-80-1 | 42° |
| 2431-80-2 | 54° |
| 2431-80-3 | 66° |
| 2431-80-4 | 78° |
| 2431-80-5 | 90° |
| 2431-80-6 | 102° |
| 2431-80-7 | 114° |
| 2431-80-8 | 126° |
| 2431-80-9 | 138° |
| 2431-80-10 | 150° |
| 2431-80-11 | 162° |
| 2431-80-12 | 174° |
| 2431-80-13 | 186° |
| 2431-80-14 | 198° |
| 2431-80-15 | 210° |
| 2431-80-16 | 222° |
| 2431-80-17 | 234° |
| 2431-80-18 | 246° |
| 2431-80-19 | 258° |
| 2431-80-20 | 270° |
| 2431-80-21 | 282° |
| 2431-80-22 | 294° |
| 2431-80-23 | 306° |
| 2431-80-24 | 318° |

GSD

2431-80-*
(SHEET 2 OF 2)

| REVISIONS | |
|-----------|-------------------------|
| ISSUE | CHANGES |
| 0 | ER 34028 KH 08/06/92 |
| KAM2137 | |

SCALE 1:1

APPROX SURFACE AREA

USED ON

REF:

PART NO. & ANGLE TABLE

| | |
|----------|---------------|
| DRAWN KH | DATE 07/17/92 |
|----------|---------------|

| | |
|-----------|---------------|
| DESIGN JT | DATE 07/21/92 |
|-----------|---------------|

| | |
|-------|------|
| APPR. | DATE |
|-------|------|

KINGS
ELECTRONICS CO., INC.
TUCKAHOE, NEW YORK 10707

2431-80-*
(SHEET 2 OF 2)

GSD