

# New Jersey Semi-Conductor Products, Inc.

20 STERN AVE.  
 SPRINGFIELD, NEW JERSEY 07081  
 U.S.A.

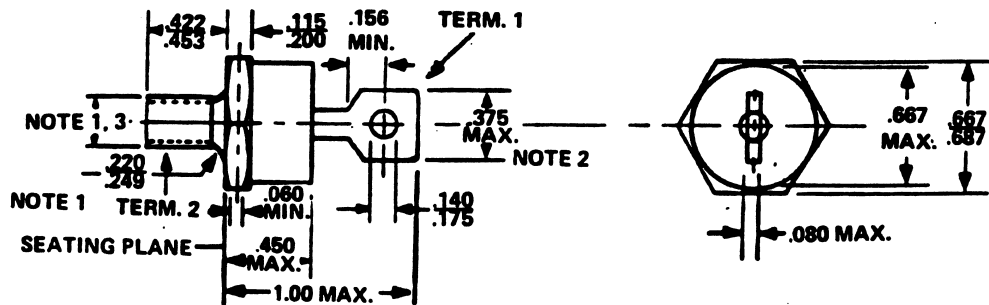
TELEPHONE: (973) 376-2922  
 (212) 227-6005  
 FAX: (973) 376-8960

## PARAMETERS

1N3306B  
 REF/REG DIODE, 10W < P(D)

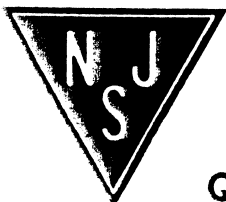
Description: Ref/Reg Diode, 10W < P(D)  
 Manufacturer.....  
 Mil/High-Rel? (Y/N).....  
 Nom. Ref. Volt..... 7.5  
 Test Current..... 1.7  
 Tol. (%)..... 5  
 PD Max. (W)..... 50  
 Dyn. Zmax (j)..... 300m  
 Temp Coef pp/10k.....  
 Oper. Temp (x C) Max..... 175u  
 Pkg Style.....  
 Surface Mounted (Y/N)..... N

u Junction Temperature 2 It(rms)



### NOTES:

1. COMPLETE THREADS TO EXTEND TO WITHIN 2-1/2 THREADS OF SEATING PLANE.
2. ANGULAR ORIENTATION OF THIS TERMINAL IS UNDEFINED.
3. 1/4-28 UNF-2A. MAXIMUM PITCH DIAMETER OF PLATED THREADS SHALL BE BASIC PITCH DIAMETER (.2268", 5.74 MM) REF. (SCREW THREAD STANDARDS FOR FEDERAL SERVICES 1957) HANDBOOK H28 1957 P1.
4. MINIMUM FLAT.



Quality Semi-Conductors