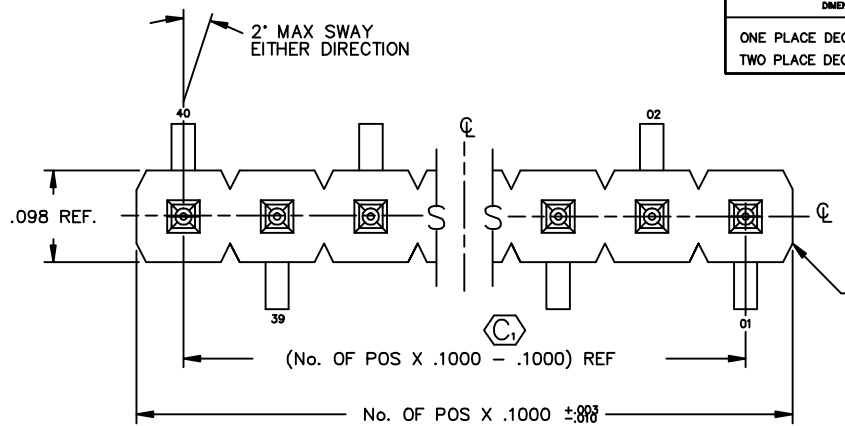


REV. P

| | | | | | |
|--------------------------|-------------------------|----------------------------|----------------------------|-----------------|------|
| DIMENSIONS ARE IN INCHES | | UNLESS OTHERWISE NOTED | | TOLERANCES ARE: | |
| ONE PLACE DECIMALS ±.1 | TWO PLACE DECIMALS ±.01 | THREE PLACE DECIMALS ±.005 | FOUR PLACE DECIMALS ±.0020 | ANGLES | ± 2° |

TITLE: SINGLE ROW SURFACE MOUNT TERMINAL STRIP .018 SQ POST

DWG NO: TSF-1XX-02-X-S-XX
SHEET 1 OF 1



TSF-1XX-02-XX-S-XX

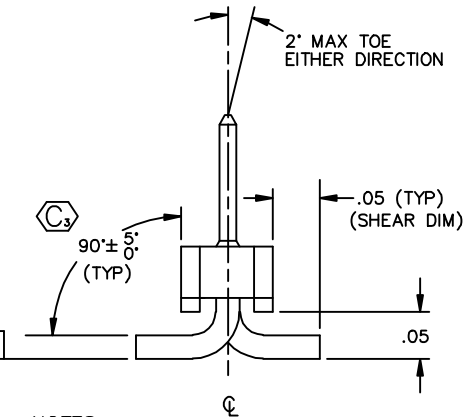
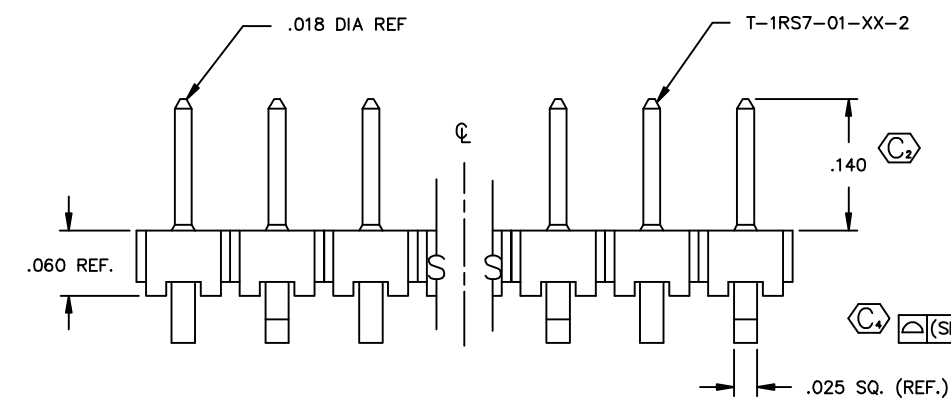
No. OF POSITIONS
-02 THRU -40

LEAD STYLE
-02: T-1RS7-01-XX-2

PLATING SPECIFICATIONS
-S: SELECTIVE (USE T-1RS7-01-R-2)
-T: TIN (USE T-1RS7-01-T-2)
-TM: MATTE TIN (USE T-1RS7-01-TM-2)
-SM: SELECTIVE GOLD/MATTE TIN TAIL (USE T-1RS7-01-RM-2)

POLARIZING OPTION
POLARIZED POSITION
SPECIFY OMITTED PIN

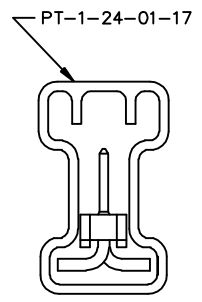
ROW SPECIFICATION
-S: SINGLE ROW
(USE TLW-40-S)



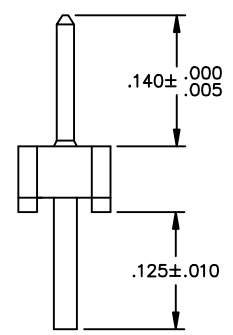
NOTES:

- 1.) TERMINAL PUSHOUT FORCE: 1 lbs MIN.
- 2.) Ⓢ REPRESENTS A CRITICAL DIMENSION.
- 3.) COPLANARITY SPECS:
2-22 POS: .006
23-29 POS: .008
30-36 POS: .010
- 4.) PARTS TO BE PACKAGED IN TUBES (USE PT-1-24-01-17 & TP-24 2/TUBE) 4 POSITION MIN.
- 5.) LOAD PARTS POS 1 FIRST IN SAME DIRECTION AS ARROW.
- 6.) MAXIMUM CUT FLASH: .010

PACKAGE AS SHOWN



(SEE NOTES 4 & 5)



IN-PROCESS VIEW
SHEAR TAILS TO .125

PROPRIETARY NOTE
THIS DOCUMENT CONTAINS INFORMATION CONFIDENTIAL AND PROPRIETARY TO SAMTEC INC. AND SHALL NOT BE REPRODUCED OR TRANSMITTED TO OTHER DOCUMENTS OR DISCLOSED TO OTHERS OR USED FOR ANY PURPOSE OTHER THAN THAT FOR WHICH IT WAS OBTAINED WITHOUT THE EXPRESSED WRITTEN CONSENT OF SAMTEC INC.

PLOT SCALE: 1=1

samtec

810 PROGRESS BLVD. NEW ALBANY, INDIANA 47150
PHONE (812) 944-6733 P.O. BOX 1147
CODE 55322

MADE BY: GARY PURVIS 12-3-91

TSF-1XX-XX-X-S-XX
SHEET 1 OF 1