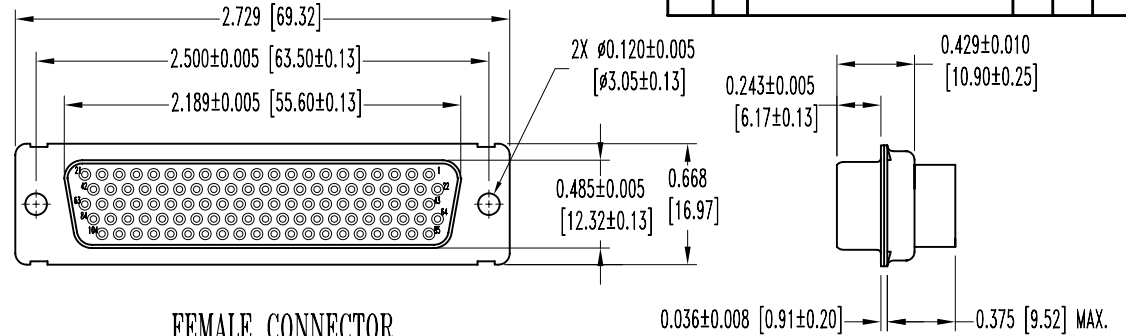
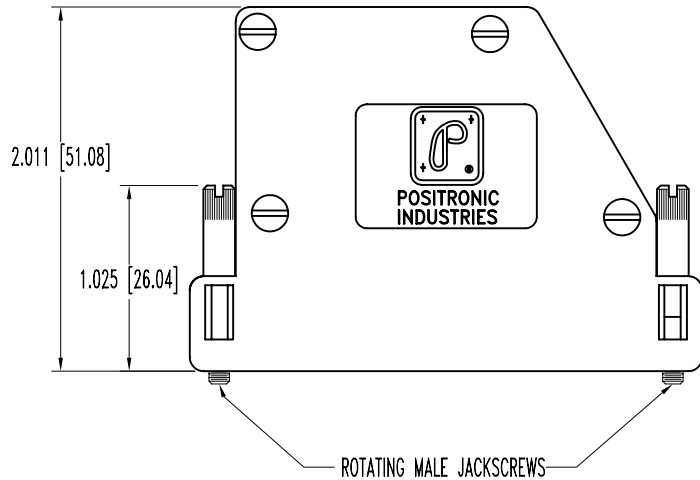
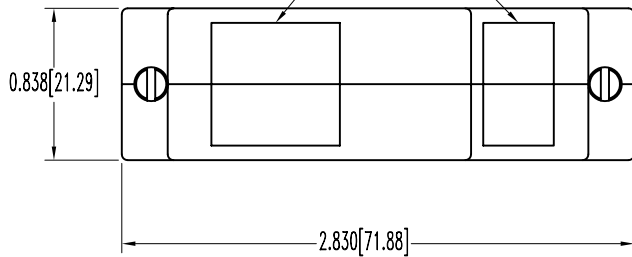


SK6707

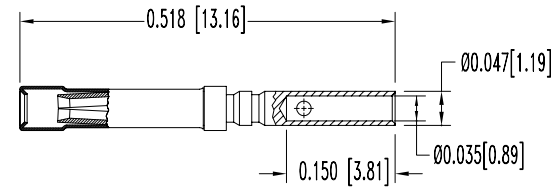
POSITRONIC INDUSTRIES BELIEVES THE DATA ON THIS DRAWING TO BE RELIABLE. SINCE THE TECHNICAL INFORMATION IS GIVEN FREE OF CHARGE, THE USER EMPLOYS SUCH INFORMATION AT HIS OWN DISCRETION AND RISK. POSITRONIC INDUSTRIES ASSUMES NO RESPONSIBILITY FOR RESULTS OBTAINED OR DAMAGES INCURRED FROM USE OF SUCH INFORMATION IN WHOLE OR IN PART.

DATE	REV	REVISION RECORD	APP	DR	CK
11-8-05	NC	ECO 24974		YK	

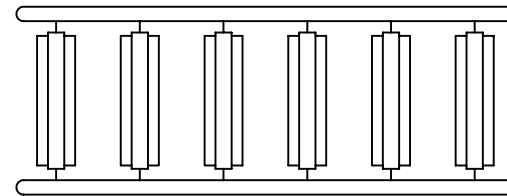
CABLE OPENING POSITIONS
 $\varnothing 0.125$ [3.18] MIN.
 $\varnothing 0.550$ [13.97] MAX.



FEMALE CONNECTOR



FEMALE CONTACT



INSERT TREE

NOTES:

- MATERIALS AND FINISHES:
 INSULATOR: GLASS FILLED POLYESTER PER MIL-M-24519, UL 94V-0, BLUE COLOR.
 CONTACTS: COPPER ALLOY WITH STAINLESS STEEL SHROUD, GOLD FLASH OVER NICKEL PLATE.
 SHELLS: STEEL, ZINC PLATE WITH DICHROMATE SEAL.
 HOOD: COMPOSITE, CONDUCTIVE
 VOLUME RESISTIVITY: (1.0 OHM.-cm MAX.)
 ATTENUATION: 40+ DECIBELS.
 CABLE CLAMPS: STEEL WITH NICKEL PLATE.
 CABLE CLAMP SCREWS: STEEL, ZINC PLATE.
 COVER SCREWS: STEEL, BLACK OXIDE.
 JACKSCREWS: STEEL, ZINC PLATE WITH BLUE CHROMATE SEAL.
 INSERT TREE: COMPOSITE, CONDUCTIVE
 VOLUME RESISTIVITY: (1.0 OHM.-cm MAX.)
 ATTENUATION: 40+ DECIBELS.
- ELECTRICAL CHARACTERISTICS:
 INSULATOR RESISTANCE: 5 G OHMS.
 TEMPERATURE RANGE: -55°C TO +125°C,
- DIMENSIONS ARE IN INCHES (MILLIMETERS).

	POSITRONIC INDUSTRIES INC. www.connectpositronic.com		SCALE	DRAWN BY
	ODD SERIES		N.T.S.	YK
DECIMAL TOL. ± 0.015 [0.38]	TITLE ODD104F10Y00		APPROVED BY	
ANGULAR TOL. $\pm 5^\circ$	DATE 11-8-05	DRAWING NUMBER SK6707	REV. NC	