

SPECIFICATIONS

Mechanical

Insertion Force: 45N max.
Withdrawal Force: 10N min.
Durability: 500 Cycles.

Electrical

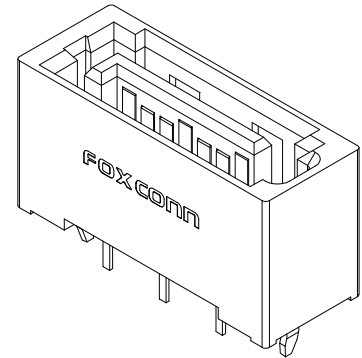
Voltage Rating: 250V.
Current Rating: 1.5A per pin min.
Contact Resistance: 30mW max.
Dielectric Withstanding Voltage: 500V AC.
Insulation Resistance: 1000MW min.

Physical

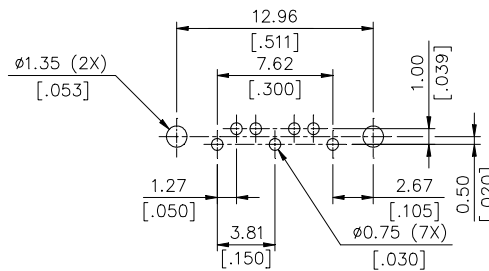
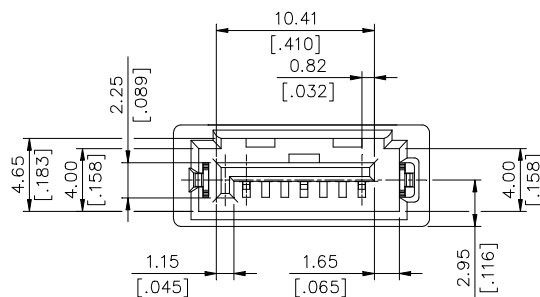
Housing: Thermoplastic, UL 94V-0 rated in Black Color
Contact: Copper alloy
Plating: See "ORDERING INFORMATION"
Board Lock: Copper alloy
Operating Temperature: -55 to +85

Serial ATA Connector

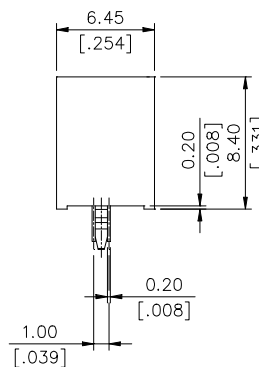
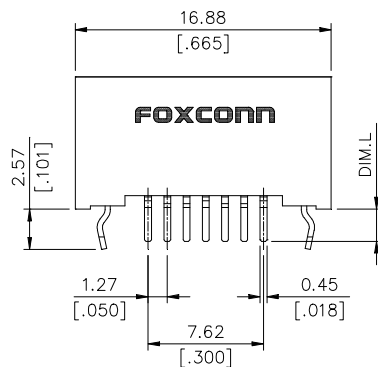
LD Series
Vertical, T/H Type
Shrouded Plug
1.27mm [.050"] Pitch
7 Pos.



DRAWING



RECOMMENDED P.C.B. LAYOUT



ORDERING INFORMATION

PRODUCT NO.: LD 1 8 0 7 * - S 5 2 * * *

Serial ATA
Termination & Contact Type
No. of Pos
07=7 Pos
Contact Area Plating
1: Gold Flash
3: 30u" Gold
7: 15u" Gold
F: Gold Flash With RoHS Compliance
H: Gold Plating 30u" With RoHS Compliance
V: Gold Plating 15u" With RoHS Compliance
Modification Code

Tail Length
None/A :DIM.L=2.45mm
B :DIM.L=2.85mm
C :DIM.L=3.25mm
D :DIM.L=2.05mm
Packing Type
1/None = Tray
Housing Material
L/None =Color Black LCP
P=Color Balck PBT
B=Color Blue PBT
F=Color Pink PBT
W=Color White PBT
J=Color Orange PBT
T=Color Black PA6T
U=Color Blue PA6T
R=Color Red PBT