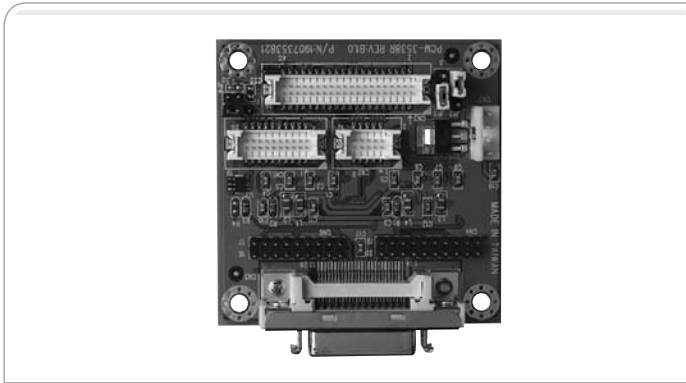


# PCM-3538R

■ LVDS To TTL Receiver Module



### Features

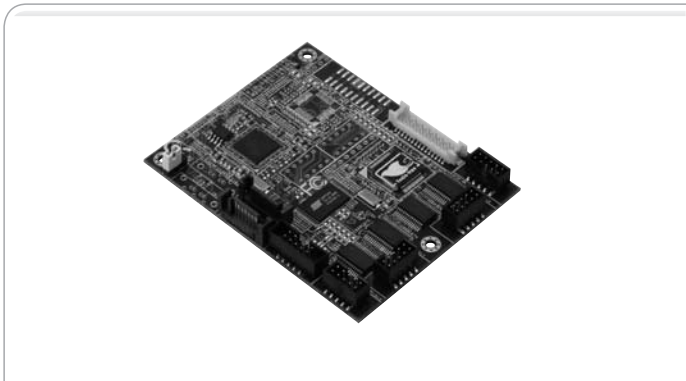
- Using THC63LVDF84A Chipset (Receiver Module)
- Scalable Bandwidth: VGA (640 x 480) To SXGA (1280 x 1024)
- LVDS Channel (3 Data Pairs & 1 Clock Pair) For 18/24/36/48-bit LVDS Panel
- Cable Distance Supports: 5M Or Above (Depends On Cable Quality)
- Wide Frequency Range:
  1. One Channel (20 ~ 85 MHz)
  2. Two Channels (20 ~170 MHz)
- 28:4 Data Channel Compression At Up To 245 Mbps Throughput
- Input LVDS Differential Signal From THC 63LCDM83A Chipset (PCM-3538T, Transmitter Module)

### Ordering Information

- PCM-3538R-A10  
TTL to LVDS Transmitter Module Rev. A1.0

# PER-T061

■ ECX Extension Board



### Specifications

System	
Form Factor	ECX Extension Board (AAEON Proprietary)
Controller	Chronitel CH7308 (LVDS)/ CH7307 (DVI), Silicon Image™ Sil3132CNU (SATA)
LCD Interface	24-bit Dual-channel LVDS TFT LCD (LVDS version)
DVI	DVI-D x 1 (DVI version)
SATA	SATA II with RAID 0 & RAID 1
Serial Port	RS-232 x 4
USB	USB2.0 x 1
Board Size	3.2" (L) x 2.57" (W) (81.4mm x 65.3mm)

## ECX Proprietary Modules

### Features

- Support 24-bit Dual-channel LVDS
- Com Port x 4

### Packing List

- 9681T06100  
Cable Kit
  - 1709070500 SATA Cable
  - 1701100206 COM Port Cable
  - 1709100207 USB Cable
  - 1700200200 DVI Cable
- Quick Installation guide
- Utility CD
- PER-T061

### Ordering Information

- TF-PER-T061-A10  
ECX Extension Board LVDS Version
- TF-PER-T061-A10-01  
ECX Extension Board DVI Version