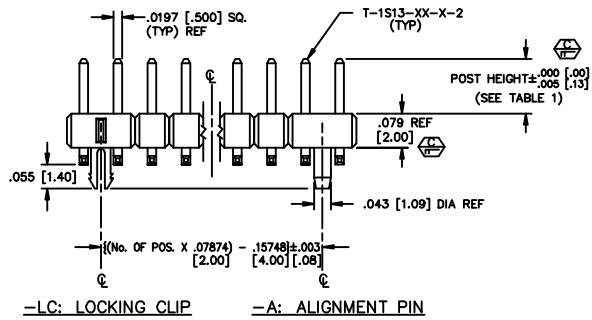
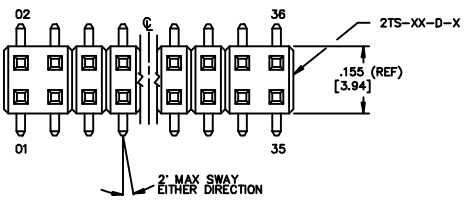
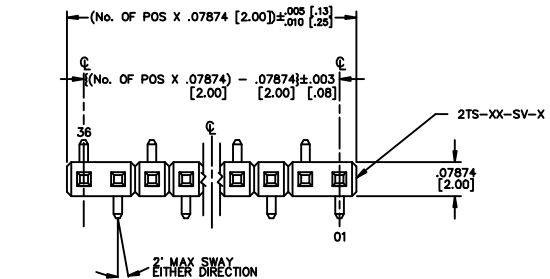


REV. S



-LC: LOCKING CLIP -A: ALIGNMENT PIN

TABLE 1

LEAD STYLE	PIN	OVERALL LENGTH	POST HEIGHT
-01	T-1S13-20-X-2	.323 [8.204]	.126 [3.20]
-02	T-1S13-20-X-2	*.323 [8.204]	.075 [1.91]

- NOTES:
- PUSHOUT FORCE SHALL BE 2 LB MIN.
 - Ø REPRESENTS A CRITICAL DIMENSION
 - ALL DIMENSIONS IN BRACKETS [] TO BE IN MILLIMETERS.
 - * TAILS WILL BE SHEARED ON -02 LEAD STYLE.
 - MEASURED FROM BEND.
 - DUE TO THE HIGH AMOUNT OF INSERTION FORCE NEEDED, THE -LC OPTION IS NOT COMPATIBLE WITH AUTO PLACEMENT. SAMTEC RECOMMENDS MANUAL PLACEMENT FOR ALL ASSEMBLIES WITH THE -LC OPTION.
 - INSULATOR MATERIAL: BLACK, LCP, UL 94 V0

- PLATING SPECIFICATION
- T: MATTE TIN CONTACT AND TAIL
 - S: SELECTIVE, 30 Au / 50 Ni MIN ON CONTACT, MATTE TIN TAIL
 - L: LIGHT SELECTIVE, 15 Au / 50 Ni MIN ON CONTACT, MATT TIN TAIL
 - F: FLASH SELECTIVE, 3 Au / 50 Ni ON CONTACT, MATTE TIN TAIL

DIMENSIONS ARE IN INCHES UNLESS OTHERWISE NOTED TOLERANCES ARE: ONE PLACE DECIMALS: ±.1 THREE PLACE DECIMALS: ±.005 TWO PLACE DECIMALS: ±.01 FOUR PLACE DECIMALS: ±.0020 ANGLES: ±5°

TITLE: 2 mm TERMINAL STRIP VERTICAL (SINGLE/DOUBLE ROW) SURFACE MOUNT

DWG NO: MMT-1XX-XX-X-XV-XX-XX-XX

SHEET 1 OF 1

MMT-1XX-XX-X-XV-XX-XX-XX

NO. OF POSITIONS PER ROW (-02 THRU -36)

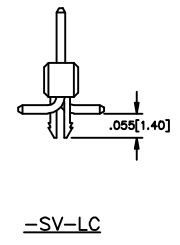
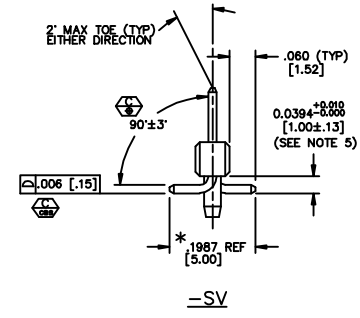
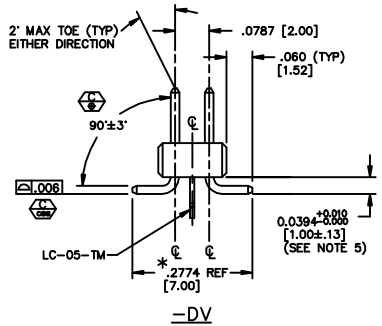
LEAD STYLE SEE TABLE 1

OPTION
-P: PICK & PLACE PAD
-TR: TAPE & REEL

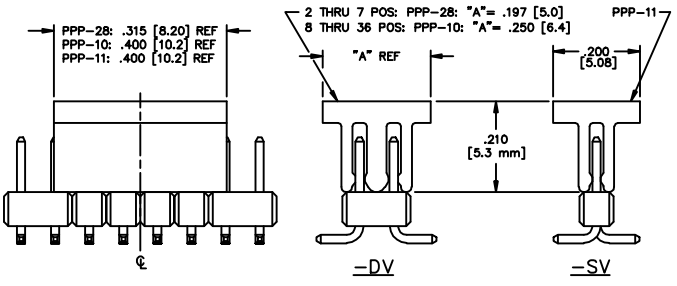
OPTION
POLARIZED
SPECIFY POS -XX AS POS TO BE OMITTED

OPTION
-LC: LOCKING CLIP (SEE NOTE 6)
(USE LC-05-TM)
(FOR -DV USE 2TS-XX-D)
(FOR -SV USE 2TS-XX-SV)
-A: ALIGNMENT PIN
(FOR -DV USE 2TS-XX-DV-A)
(FOR -SV USE 2TS-XX-SV-A)

BODY SPECIFICATION
-SV: SINGLE (2TS-XX-SV-X)
-DV: DOUBLE (2TS-XX-D-X)



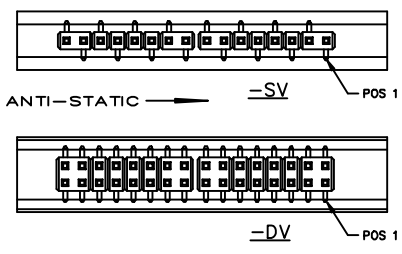
-P: PICK & PLACE PAD OPTION



Do not scale from this print

PROPRIETARY NOTE
THIS DOCUMENT CONTAINS SAMTEC'S PROPRIETARY INFORMATION AND IS THE PROPERTY OF SAMTEC. IT IS TO BE USED ONLY FOR THE PURPOSES SPECIFIED IN THE ORDER. IT IS NOT TO BE REPRODUCED, COPIED, OR DISTRIBUTED IN ANY MANNER WITHOUT THE WRITTEN PERMISSION OF SAMTEC.

PACKAGE PARTS AS SHOWN



- NOTES:
- USE PT-1-24-01-17 AND (2) TP-24 FOR -SV.
 - USE PT-1-24-02-17 AND (2) TP-09 FOR -DV.
 - LOAD PARTS POS 1 FIRST IN SAME DIRECTION AS ARROW.

PLOT SCALE: 1=1.1428

samtec
CORPORATION

810 PROGRESS BLVD. NEW ALBANY, INDIANA 47150
PHONE (812) 944-8733 P.O. BOX 1147
CODE 55322

MADE BY: QRO REORDER: 8-25-92
CHECKED BY: ECKERT 6-25-92 DEM

MMT-1XX-XX-X-XV-XX-XX-XX
SHEET 1 OF 1