

THIS DRAWING IS A CONTROLLED DOCUMENT FOR FCI INTERCONNECTIONS. IT IS SUBJECT TO CHANGE AND THE CONTROLLING DOCUMENT CONTROL CENTER SHOULD BE CONTACTED FOR THE LATEST REVISION.

THIS INFORMATION IS CONFIDENTIAL AND DISCLOSED TO YOU ON CONDITION THAT NO FURTHER DISCLOSURE IS MADE BY YOU TO OTHER THEN FCI PERSONNEL WITHOUT WRITTEN AUTHORIZATION FROM FCI INTERCONNECTIONS, YORK, PA.

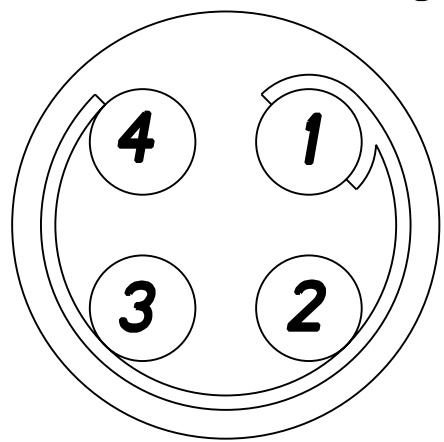
4

3

2

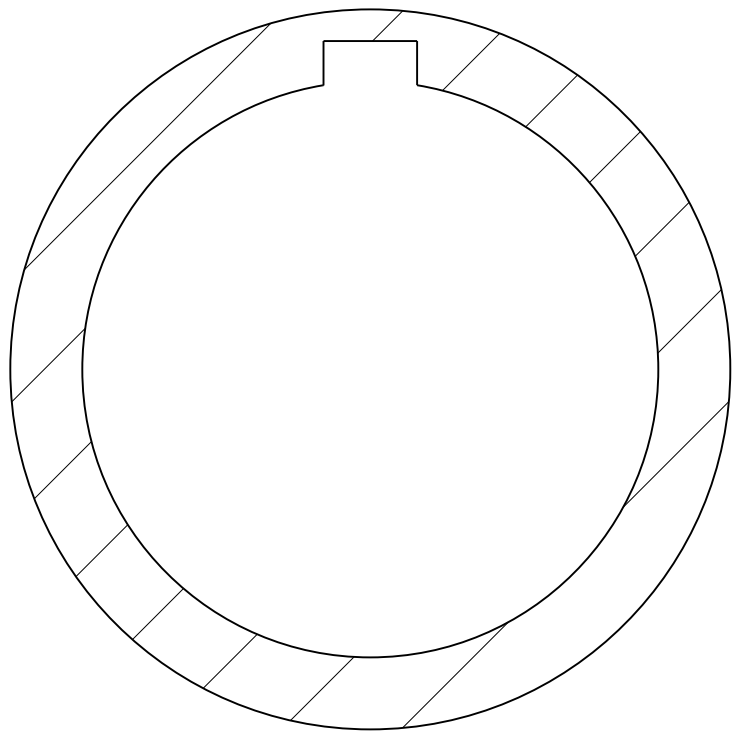
1

Insulator
Viewed from wiring side

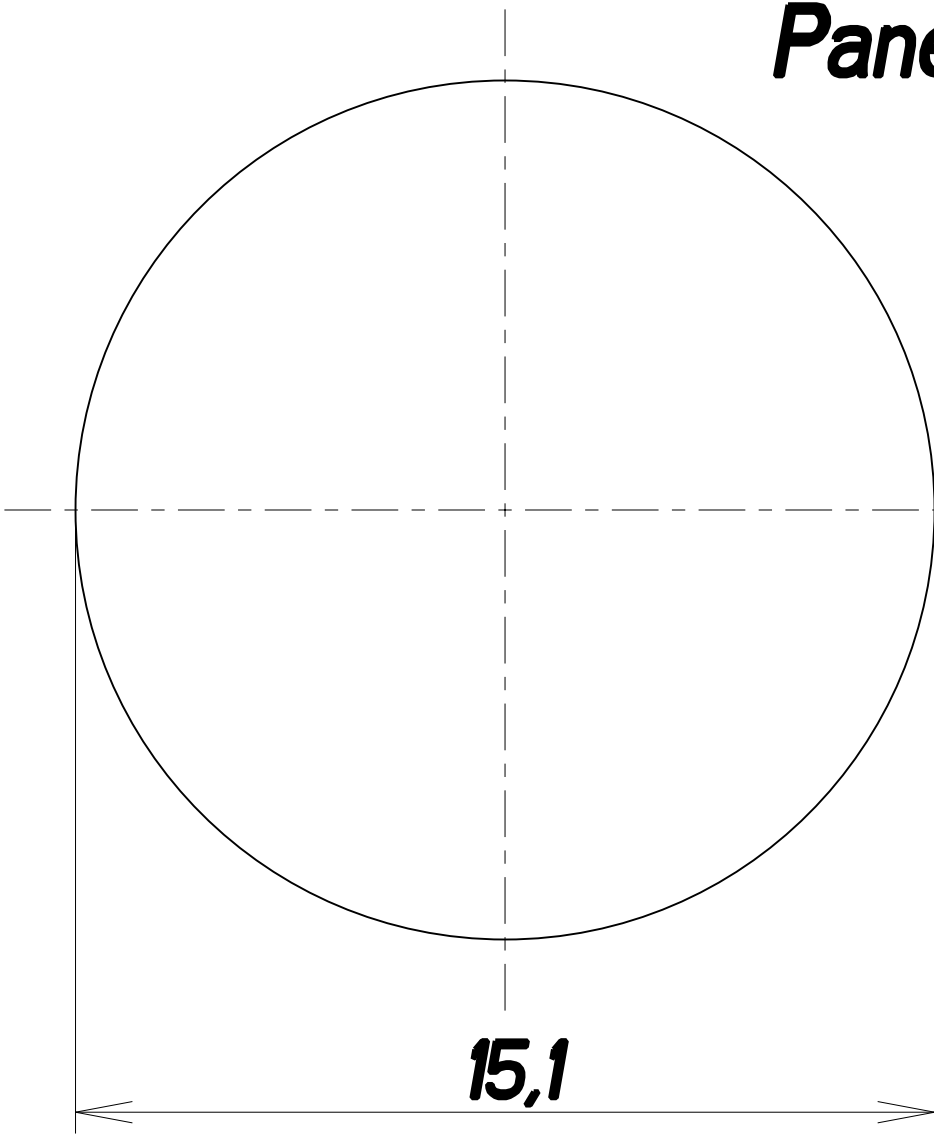


4 sockets x 1.3 mm

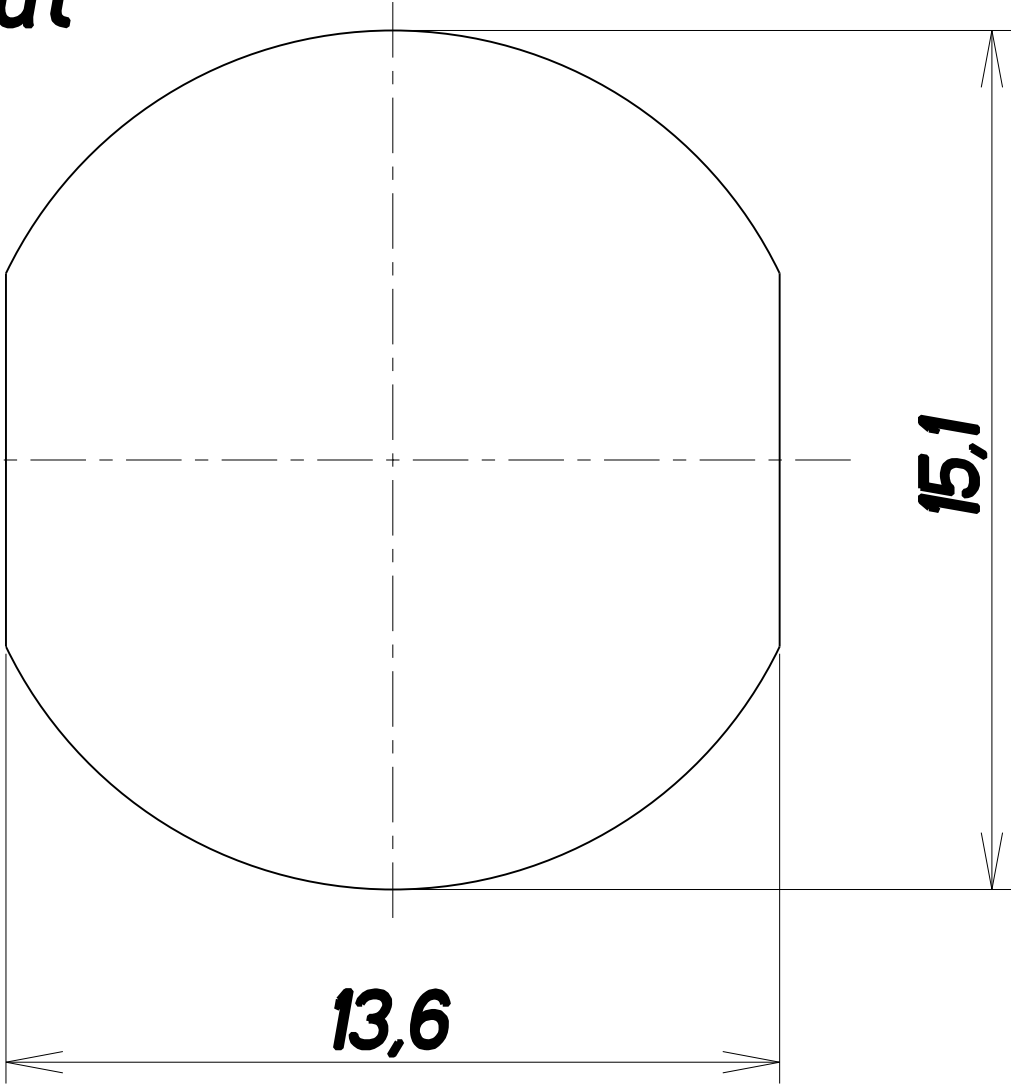
Keying



Panel cut-out



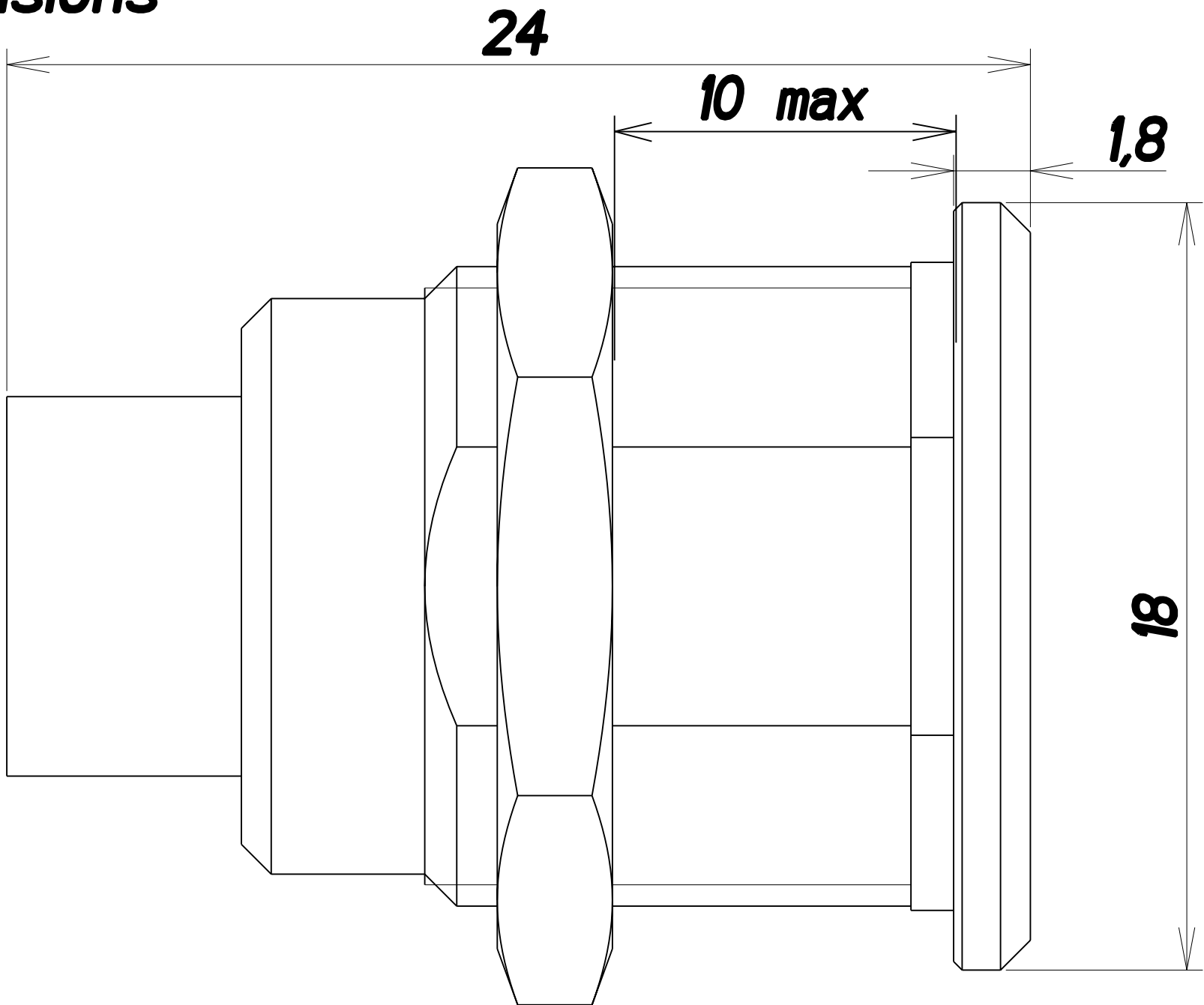
15,1



13,6

15,1

Dimensions
(mm)



24

10 max

1,8

18

FIXED RECEPTACLE size 2

ANY CHANGES TO THIS DRAWING WILL AFFECT DIMENSIONAL ANALYSIS, DATA DRAWING LE X		DRAWING TITLE		FIXED RECEPTACLE SIZE 2	
LINEAR MEASURE: $\frac{\text{mm}}{\text{INCH}}$ mm [INCH]		CAT NO.		JBX-ER-2G-04-FC-SDS	
THIRD ANGLE PROJECTION		DWG RELEASED TO CENTRAL FILE: X		DRAWN: JAB 01-02-01	
		CAGE NO: --		CHKD: RC 01-02-01	
TOLERANCES UNLESS OTHERWISE SPECIFIED		PC:--		DSGN: -- --	
No. OF PLACES	MM [in]	SIZE: C		MFG: -- --	
ONE PLACE	$\pm 3 [\pm .1]$	APPROVAL		QC: -- --	
TWO PLACES	$\pm 0.5 [\pm .02]$	DRAWING SCALE: 4/1		DRAWING NO.	
THREE PLACES	$\pm 0.13 [\pm .005]$	INTERCONNECTIONS		REV	
ANGLES: $\pm 1^\circ$				JBX-ER-2G-04-FC-SDS	
		www.fciconnect.com		0	
		1 OF 1			

4

3

2

1

D

C

B

A