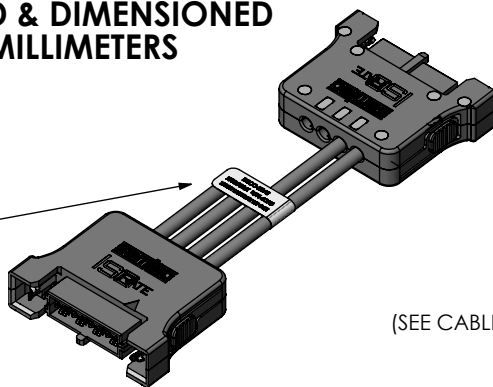
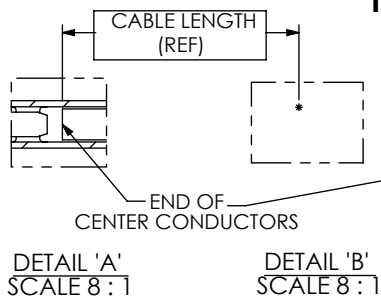


**DESIGNED & DIMENSIONED
IN MILLIMETERS**

DO NOT
SCALE FROM
THIS PRINT



IJ5C-XX-XXXX-X-X-XXX-X-XX

- B**
- 01: 1 POSITION
 - 02: 2 POSITIONS
 - 04: 4 POSITIONS
 - 06: 6 POSITIONS
 - 08: 8 POSITIONS
 - *-10: 10 POSITIONS

(* = NOT TOOLED)

ASSEMBLY LENGTH
-0100 TO -1000 (IN MILLIMETERS)
(SEE NOTE 6)
(SEE CABLE LENGTH FORMULA FOR PREP LENGTH)

OPTIONS

CABLE TYPE

- 1: CTB-2650F-01
(0100 MM - 1000 MM)
- 2: CCA-316
(0400 MM - 1000 MM)

SECOND END ORIENTATION

- NUS: NOTCH UP STRAIGHT
(P1 TO P1)
- NDS: NOTCH DOWN STRAIGHT
(P1 TO P4)

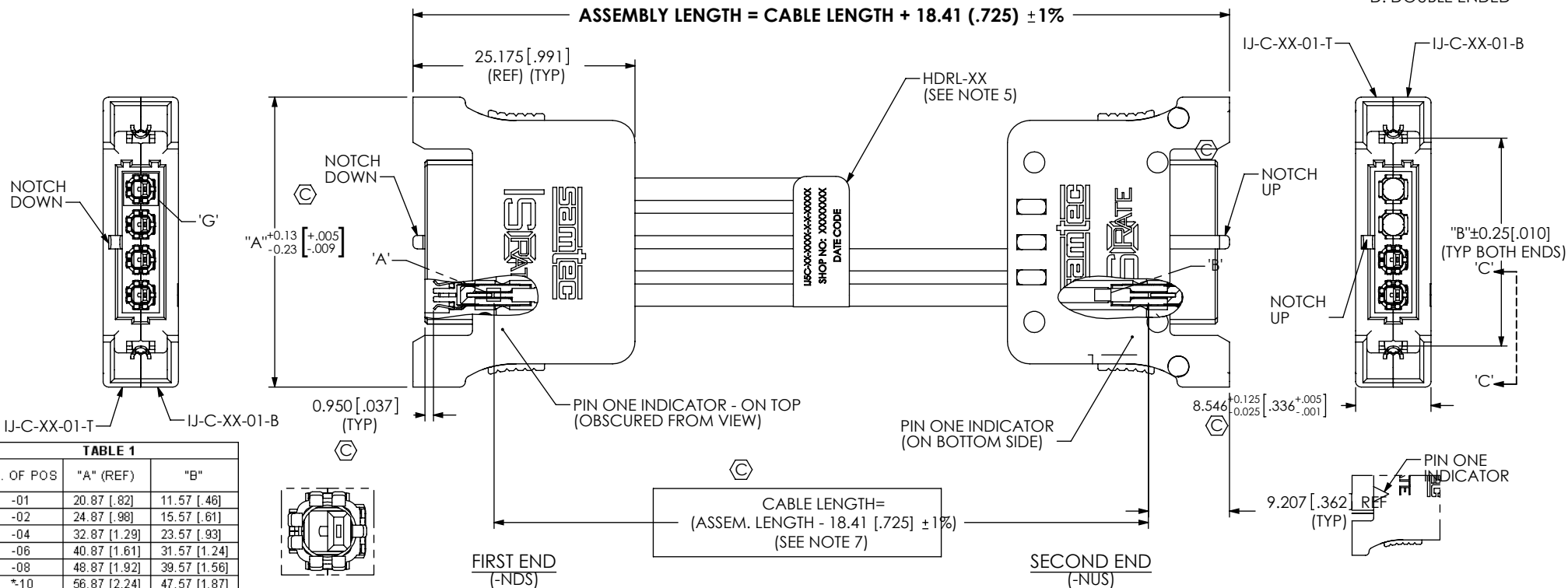
END OPTIONS

- S: SINGLE ENDED
- D: DOUBLE ENDED

PLATING OPTIONS

- s: 30μ" GOLD

ASSEMBLY LENGTH = CABLE LENGTH + 18.41 (.725) ± 1%



DETAIL 'G'

NOTES:

1. REPRESENTS A CRITICAL DIMENSION.
2. ALL ASSEMBLIES TO BE 100% ELECTRICALLY TESTED FOR SHORTS AND OPENS.
3. ALL ASSEMBLIES TO BE 100% HI-POT TESTED AT 600V.
4. PACKAGE ASSEMBLIES IN ANTI-STATIC OR STATIC DISSIPATIVE BAGS
5. LABEL AND ETEST STICKER TO BE FLAGGED AROUND SINGLE WIRE AND TO BE CENTERED ON CABLE ASSY AS SHOWN.
LABEL TO CONTAIN: PART NUMBER, SHOP ORDER & DATE CODE.
6. CABLE LENGTH GREATER THAN 1000mm [39.4"] IS A VALID PART NUMBER, BUT IS NOT SUPPORTED BY S.I. TEST DATA.
7. CABLE LESS THAN 5" [127.0mm] HAVE A LENGTH TOLERANCE OF ±.050"[1.27mm].
8. MEASURE OVER THERMO WELD FEATURES.

UNLESS OTHERWISE SPECIFIED,
DIMENSIONS ARE IN [MILLIMETERS]INCHES

TOLERANCES ARE:

- DECIMALS ANGLES
- .X: ±.3[.01] 2°
- .XX: ±.13[.005]
- .XXX: ±.051[.0020]

PROPRIETARY NOTE

THIS DOCUMENT CONTAINS INFORMATION CONFIDENTIAL AND PROPRIETARY TO SAMTEC, INC. AND SHALL NOT BE REPRODUCED OR TRANSFERRED TO OTHER DOCUMENTS OR DISCLOSED TO OTHERS OR USED FOR ANY PURPOSE OTHER THAN THAT WHICH IT WAS OBTAINED WITHOUT THE EXPRESSED WRITTEN CONSENT OF SAMTEC, INC.

MATERIAL: DO NOT SCALE DRAWING
COVERS: THERMOPLASTIC, COLOR: BLACK
SHIELD: COPPER ALLOY
CONTACT: COPPER ALLOY
DIELECTRIC: LCP, COLOR: BLACK

SHEET SCALE: 4:1

samtec

520 PARK EAST BLVD, NEW ALBANY, IN 47150
PHONE: 812-944-6733 FAX: 812-948-5047
e-Mail: info@SAMTEC.com code: 55322

DESCRIPTION:
CABLE ASSEMBLY, IJ5C CONNECTOR

DWG. NO.
IJ5C-XX-XXXX-X-X-XXX-X-XX

BY: KNOWLDEN 4/16/08 SHEET 1 OF 4

THIS PRODUCT MANUFACTURED WITH LEAD-FREE PROCESSING

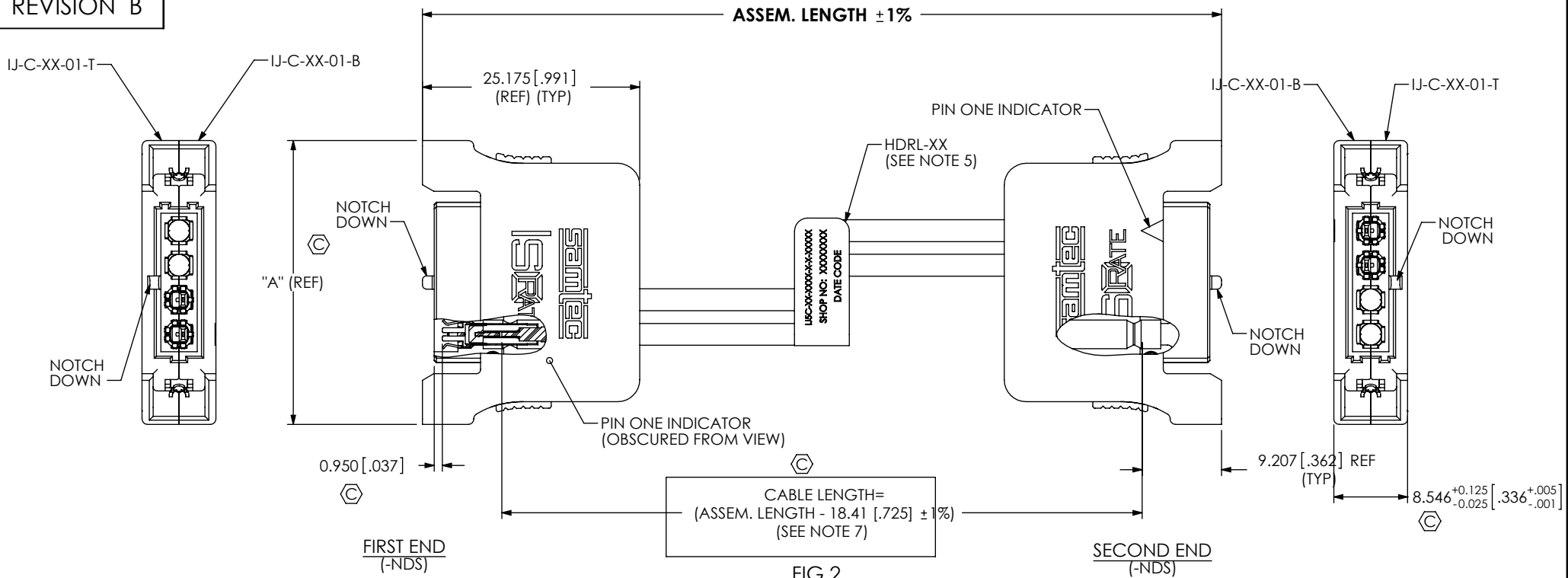


FIG. 2
 (IJ5C-04-XXXX-L-D-NDS-1 SHOWN)
 (SAME AS FIG. 1, EXCEPT AS SHOWN)
 (SHOWING SECOND END ORIENTATION -NDS)

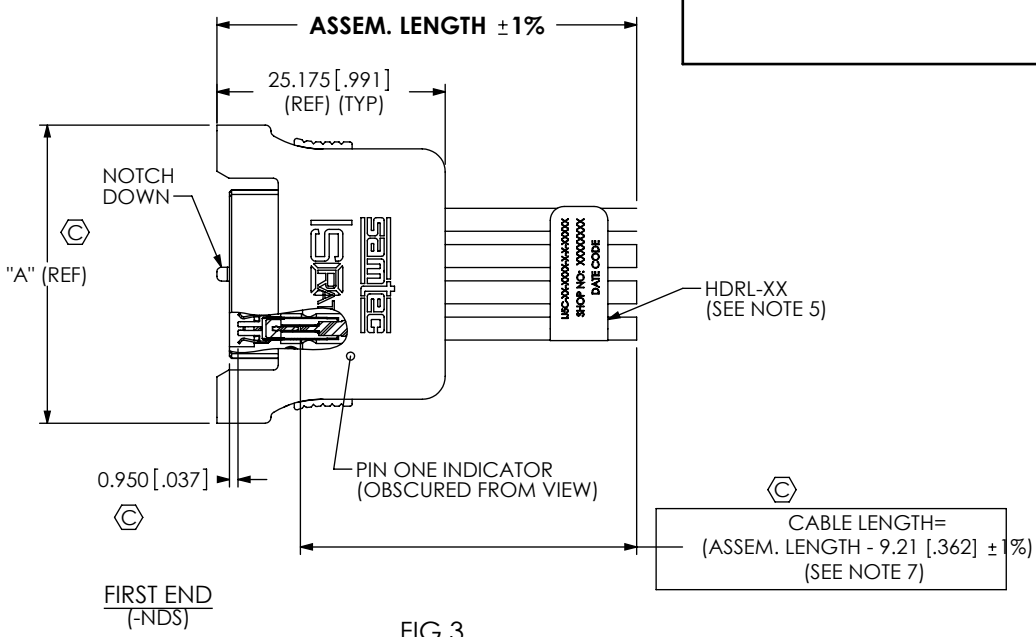


FIG. 3
 (IJ5C-04-XXXX-L-S-1 SHOWN)
 (SAME AS FIG. 1, EXCEPT AS SHOWN)

PROPRIETARY NOTE
 THIS DOCUMENT CONTAINS INFORMATION
 CONFIDENTIAL AND PROPRIETARY TO
 SAMTEC, INC. AND SHALL NOT BE REPRODUCED
 OR TRANSFERRED TO OTHER DOCUMENTS OR
 DISCLOSED TO OTHERS OR USED FOR ANY
 PURPOSE OTHER THAN THAT WHICH IT WAS
 OBTAINED WITHOUT THE EXPRESSED WRITTEN
 CONSENT OF SAMTEC, INC.

DO NOT SCALE DRAWING
 SHEET SCALE: 1:0.666667



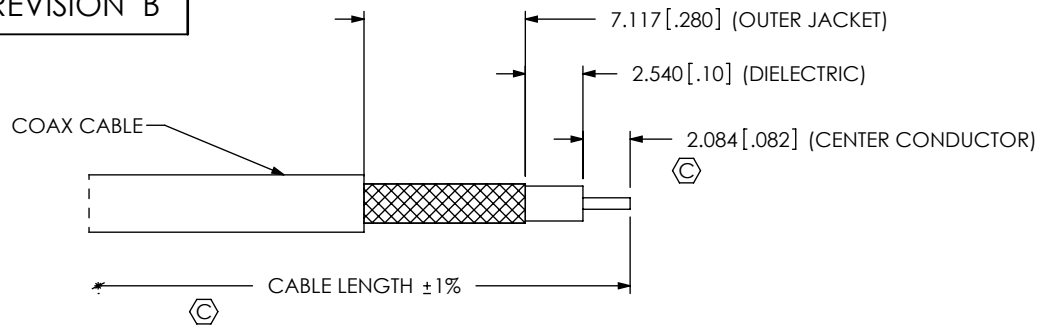
520 PARK EAST BLVD, NEW ALBANY, IN 47150
 PHONE: 812-944-6733 FAX: 812-948-5047
 e-Mail: info@SAMTEC.com code: 55322

DESCRIPTION:
 CABLE ASSEMBLY, IJ5C CONNECTOR

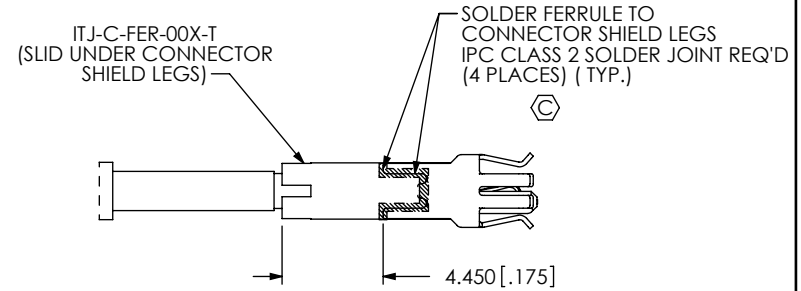
DWG. NO.
 IJ5C-XX-XXXX-X-X-XXX-X-XX

BY: KNOWLDEN 4/16/08 SHEET 2 OF 4

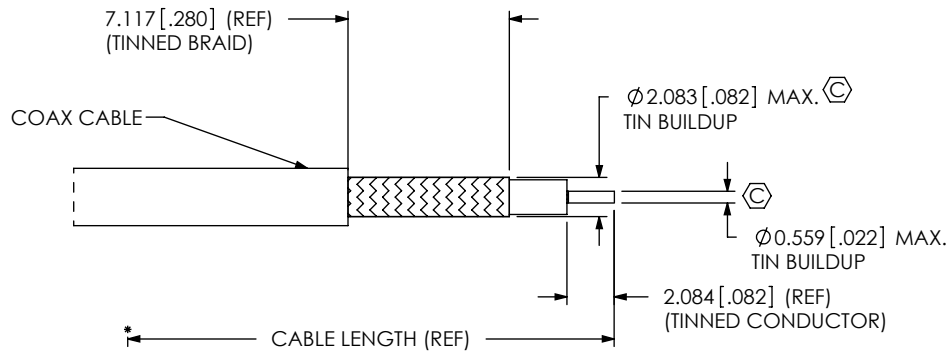
REVISION B



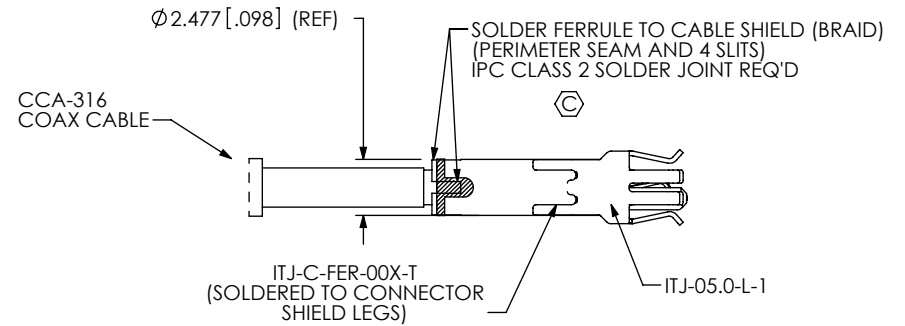
IN-PROCESS STEP 1
(MEASURE AND STRIP CABLE)



IN-PROCESS STEP 4
(POSITION & SOLDER ITJ-C-FER-001 TO CONNECTOR LEGS)

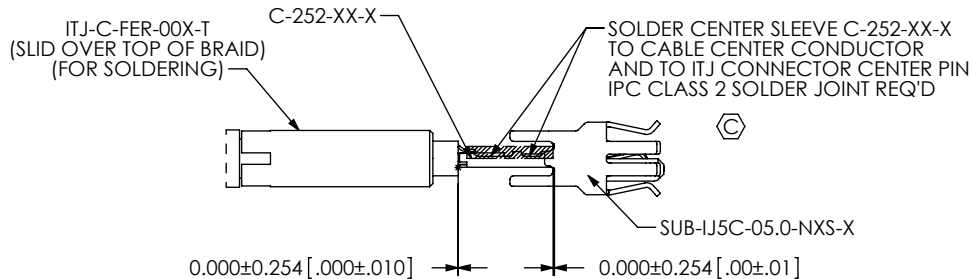


IN-PROCESS STEP 2
(PRE-TIN BRAID & CONDUCTOR)



IN-PROCESS STEP 5
(FINAL SOLDER ITJ-C-FER-001 TO TINNED BRAID)

ORIENTING SUB-IJ5C-05.0-NXS-X



IN-PROCESS STEP 3
(INSTALL & SOLDER SUB-IJ5C)

PROPRIETARY NOTE
THIS DOCUMENT CONTAINS INFORMATION CONFIDENTIAL AND PROPRIETARY TO SAMTEC, INC. AND SHALL NOT BE REPRODUCED OR TRANSFERRED TO OTHER DOCUMENTS OR DISCLOSED TO OTHERS OR USED FOR ANY PURPOSE OTHER THAN THAT WHICH IT WAS OBTAINED WITHOUT THE EXPRESSED WRITTEN CONSENT OF SAMTEC, INC.

DO NOT SCALE DRAWING

SHEET SCALE: 1:1



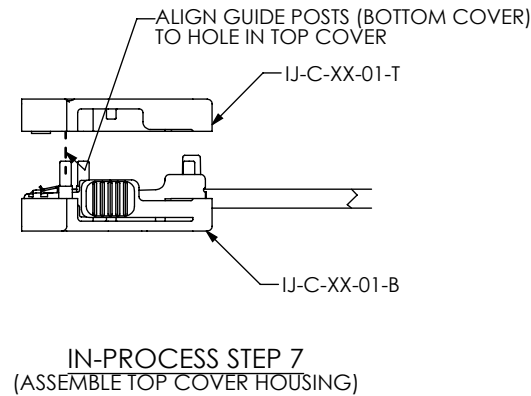
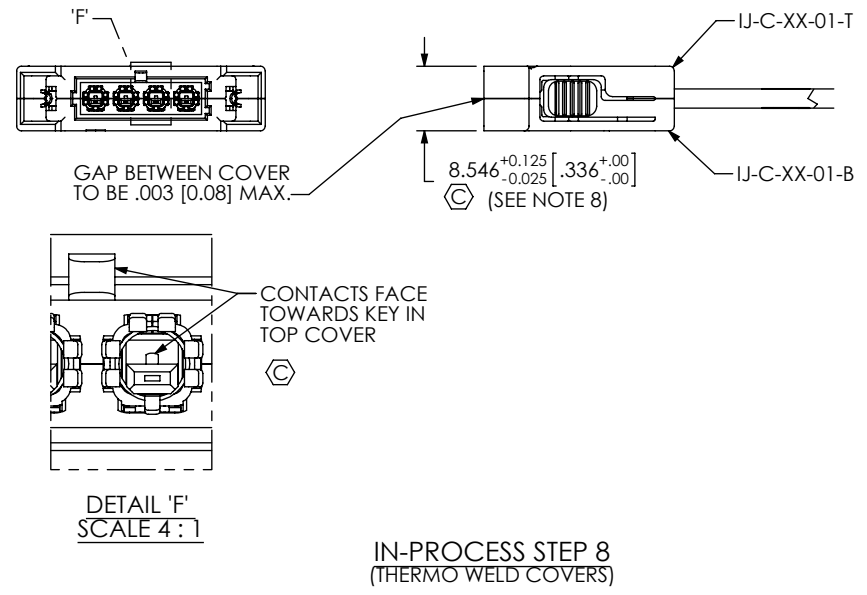
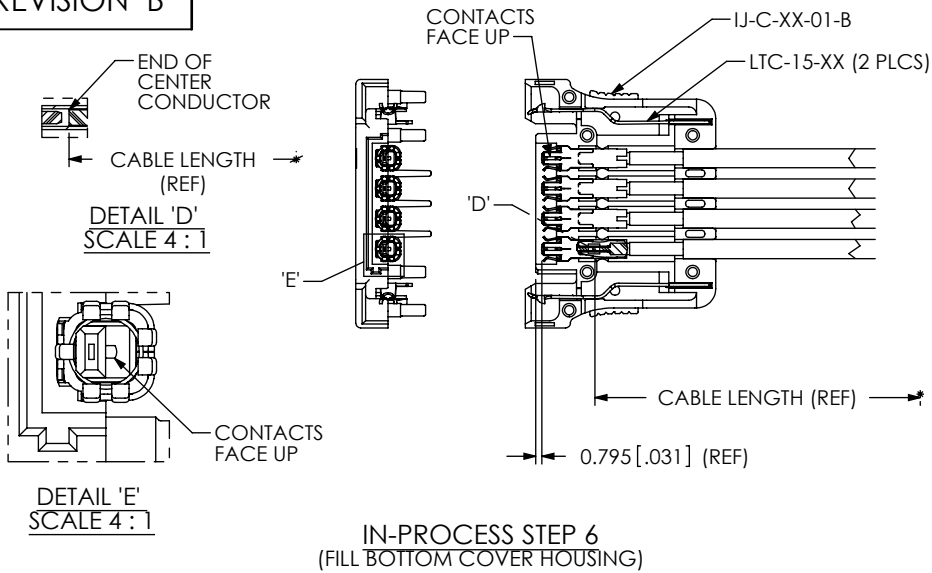
520 PARK EAST BLVD. NEW ALBANY, IN 47150
PHONE: 812-944-6733 FAX: 812-948-5047
e-Mail: info@SAMTEC.com code: 55322

DESCRIPTION:
CABLE ASSEMBLY, IJ5C CONNECTOR

DWG. NO.
IJ5C-XX-XXXX-X-X-XXX-X-XX

BY: KNOWLDEN 4/16/08 SHEET 3 OF 4

REVISION B



CRITICAL DIMENSION INSPECTION INSTRUCTION TABLE

ASSEMBLY OPERATION	START-UP INSPECTION INSPECT CODE A	IN-PROCESS INSPECTION INSPECT CODE B
IN-PROCESS STEP 1		C8, C9
IN-PROCESS STEP 2		C10, C11
IN-PROCESS STEP 3		C12
IN-PROCESS STEP 4		C13
IN-PROCESS STEP 5		C14
IN-PROCESS STEP 8		C7, C15
FINISHED ASSEMBLY		C1, C2, C3, C4, C5, C6, C7, C16

PROPRIETARY NOTE
THIS DOCUMENT CONTAINS INFORMATION CONFIDENTIAL AND PROPRIETARY TO SAMTEC, INC. AND SHALL NOT BE REPRODUCED OR TRANSFERRED TO OTHER DOCUMENTS OR DISCLOSED TO OTHERS OR USED FOR ANY PURPOSE OTHER THAN THAT WHICH IT WAS OBTAINED WITHOUT THE EXPRESSED WRITTEN CONSENT OF SAMTEC, INC.

DO NOT SCALE DRAWING

SHEET SCALE: 1:1

520 PARK EAST BLVD, NEW ALBANY, IN 47150
PHONE: 812-944-6733 FAX: 812-948-5047
e-Mail: info@SAMTEC.com code: 55322

DESCRIPTION:
CABLE ASSEMBLY, IJ5C CONNECTOR

DWG. NO.
IJ5C-XX-XXXX-X-X-XXX-X-XX

BY: KNOWLDEN 4/16/08 SHEET 4 OF 4