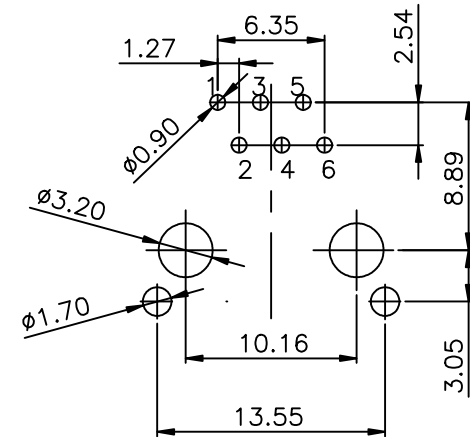
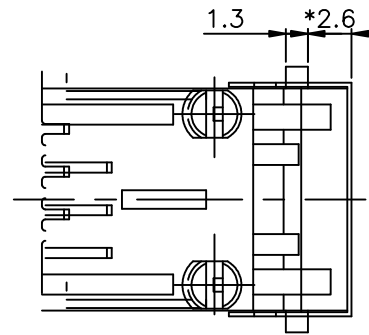
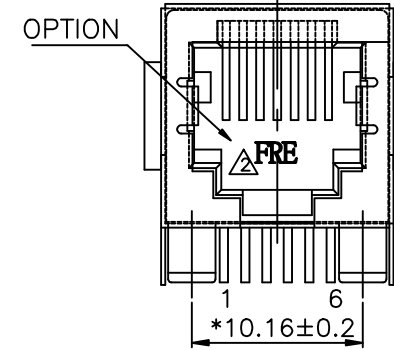
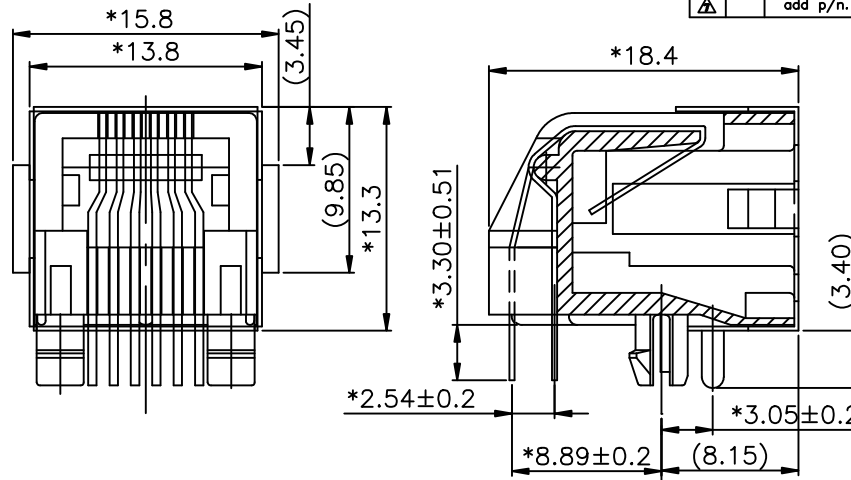


		REVISION RECORD			
REV	ECO	DESCRIPTION	DRFT	CHKD	
△		ADD PART NUMBER			
△		MODIFY NOTE			
△		add p/n.			
△		ADD PART NUMBER			
△		MODIFY PART NUMBER	CZH		2/20/01
△		MODIFY PART NUMBER	LSY		11/20/02
△		ADD PART NUMBER	SAMMY		08/08/05



PC Board Layout
Component Side Shown

NOTE:

ELECTRICAL:

- VOLTAGE RATING : 125 VAC RMS.
- CURRENT RATING : 1.5 AMP.
- CONTACT RESISTANCE : 35 MILLIOHMS MAX.
- INSULATION RESISTANCE: 1000 MEGOHMS MIN @ 500 VDC.
- DIELECTRIC STRENGTH : 1000 VAC RMS 60Hz, 1MIN.

MECHANICAL:

- HOUSING MATERIAL : PBT OR FR52
- CONTACT MATERIAL : PHOSPHOR BRONZE t=0.35mm.
- PLATING : GOLD PLATING OVER NICKEL.
- OPERATING LIFE : 750 CYCLES MIN.
- PCB RETENTION PRE-SOLDER : 1 LB MIN.
- PCB RETENTION POST-SOLDER: 10 LBS MIN.

ENVIRONMENTAL:

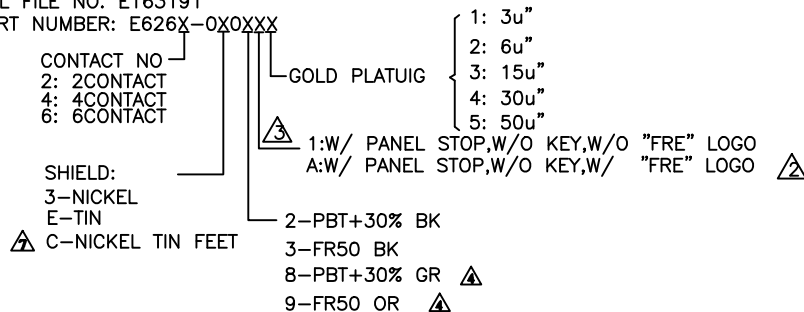
- STORAGE : -40°C TO +85°C.
- OPERATION: 0°C TO 70°C.

MATES WITH MODULAR PLUG CONFORMING TO

FCC PART 68, SUBPART F.

CUL FILE NO. E163191

PART NUMBER: E626X-0X0XXX



<p>← MM (INCH) →</p> <p>TOLERANCES EXCEPT AS NOTED</p>		<p>DFTO SYZ</p> <p>CHKD</p> <p>MFO</p> <p>APPVL XLF</p> <p>MATERIAL :</p> <p>QT'Y :</p> <p>FINISH :</p> <p>SCALE :</p>	<p>DATE 3/10/99</p> <p>DATE</p> <p>DATE</p> <p>DATE 08/09/05</p>	<p>FULL RISE ELECTRONIC CO., LTD</p> <p>TITLE</p> <p>AMP L/P SIDE ENTRY PCB JACK 6P</p>	
<p>DETAILED LISTS</p> <p>MM</p> <p>.0 ±0.20</p> <p>.00 ±0.15</p> <p>.000 ±0.075</p>	<p>±</p> <p>±</p> <p>±</p>	<p>ANGLES ±</p>	<p>THIRD ANGLE PROJECTION</p>	<p>DRAWING NO. GE623055</p> <p>/PART NO. SEE NOTE</p>	<p>SIZE A3</p> <p>REV 7</p>
<p>DO NOT SCALE DRAWING</p>			<p>SHEET X OF Y</p>		