

**SPECIFICATIONS**

**DDR Connector**

**Mechanical**

**Contact Retention Force:** 0.75Lbs (0.34kgf) min. per Contact  
**Durability:** 25 Cycles  
**Dram Board Insertion Force:** 3 oz max. per Contact

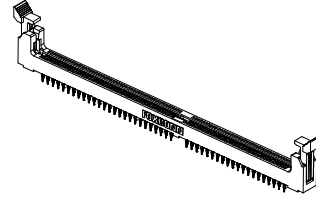
**AT992 Series**  
**Vertical Type**  
**Press Fit Type**  
**1.27mm [.050"] Pitch**  
**184 Pos.**

**Electrical**

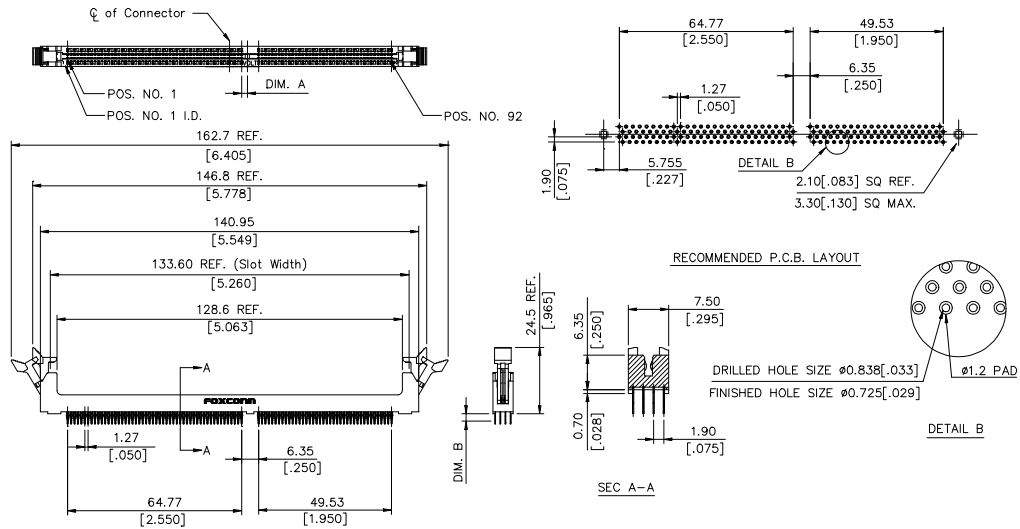
**Voltage Rating:** 250V AC  
**Current Rating:** 1.0A max., 30 max., in Temperature Rise  
**Insulation Resistance:** 1000MW min. initial  
**Dielectric Withstanding Voltage:** 500V AC at Sea Level  
**Low Level Contact Resistance:** 30mW max. initial

**Physical**

**Housing:** Thermoplastic, UL 94V-0 rated in Black Color  
**Contact:** Copper alloy  
**Ejector:** Thermoplastic, UL 94V-0 rated in Ivory Color  
**Metal Hold Down:** Copper alloy  
**Operating Temperature:** -55 to +105

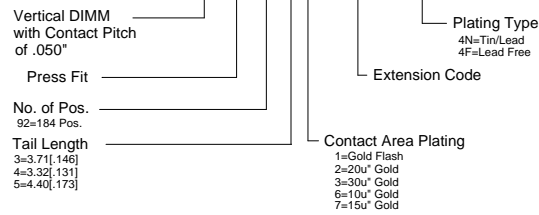


**DRAWING**



**ORDERING INFORMATION**

**PRODUCT NO.: AT992\*\* - B7B - \*\***



AT9923*-B7B-4F		2.5V	2.175 [.086]	3.71 [.146]
AT9924*-B7B-4F	184	2.5V	2.175 [.086]	3.32 [.131]
AT9925*-B7B-4F		2.5V	2.175 [.086]	4.40 [.173]
P/N	POS.	VOLTAGE MARKING	DIM. A	DIM. B

All specification & dimensions are subject to change, please call your nearest Foxconn sales representative for update information.