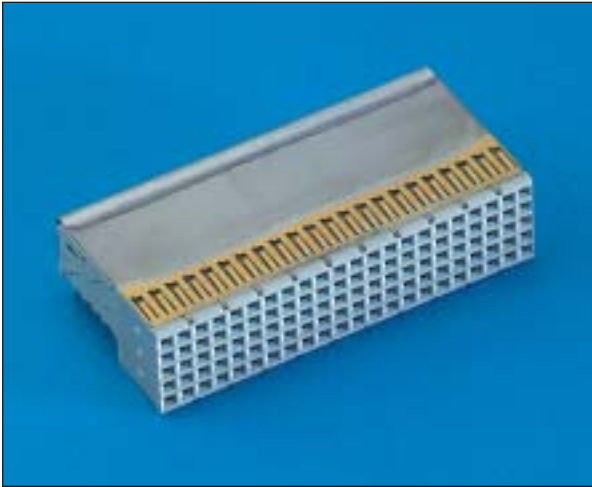


J2/J5 Type B Right Angle Female for Daughter Cards

Series 8071



- 110 signal contacts in a 5 x 22 configuration
- Designed for gas tight press-fit installation
- Supplied with or without upper ground return shield
- Daughter card applications
- Fills positions J2 and J5 of the CompactPCI specification
- This connector should be used in conjunction with a Type A or AB style to ensure proper mating alignment
- Lower ground return shield available (see page 63)

27 8071 110 000 XXX = Type B 110 Pin Right Angle Female without upper shield
27 8071 110 010 XXX = Type B 110 Pin Right Angle Female with upper shield

XXX =

Plating Code	Contact Area	Press-fit Area	Under Coat
833	0.1µm min. Au.65µm Pd/Ni	1.5-3.0µm Solder	Nickel 1.2-3.0µm
863	0.76µm min. Au	1.5-3.0µm Solder	Nickel 1.2-3.0µm

