

REV: BW

TABLE 2				
LEAD STYLE	PIN A	PIN B	"C"	"D" REF
-01-SH	T-1S13-20-X-2	N/A	.126 [3.20]	.118 [3.00]
-01-DH	T-1S13-09-X-2	T-1S13-09-X-2	.126 [3.20]	.11 [2.8]
-01-MT	T-1S13-09-X-2	T-1S13-09-X-2	.126 [3.20]	NA
-02-MT	T-1S13-09-X-2	T-1S13-09-X-2	.175 [4.45]	NA
-02-SH	T-1S13-02-X-2	N/A	.175 [4.45]	.123 [3.12]
-02-DH	T-1S13-09-X-2	T-1S13-09-X-2	.175 [4.45]	.11 [2.8]

- NOTES:
- PUSH OUT FORCE SHALL BE 2 LB. MIN.
 - ⊙ REPRESENTS A CRITICAL DIMENSION
 - ALL DIMENSIONS IN BRACKETS [] TO BE IN MILLIMETERS.
 - NOTE 4 DELETED.
 - NOTE 5 DELETED.
 - NOTE 6 DELETED.
 - FOR NON -LG & -A, USE 2TS-XX-D.
 - ⊙5: COPLANARITY TO INCLUDE INSULATOR.
 - .002 MAX BURR ALLOWED.
 - .015 MAX CUT FLASH ALLOWED. (NO FLASH TO BE ON BOTTOM OF BODY)
 - MT OPTION: PIN B TO BE FLUSH TO +/- .003" A LINE MADE BY THE BODY
 -DH OPTION: PIN A TO BE FLUSH TO .003 ABOVE A LINE MADE BY THE BODY
 PIN B TO BE FLUSH TO .001" BELOW/.003" ABOVE A LINE MADE BY THE BODY
 -SH OPTION: PIN A TO BE FLUSH TO +/- .003" A LINE MADE BY THE BODY

DIMENSIONS ARE IN INCHES		UNLESS OTHERWISE NOTED		TOLERANCES ARE:		TITLE:		DWG NO:	
ONE PLACE DECIMALS: ± .1	THREE PLACE DECIMALS: ± .005	ANGLES	± 5°	2mm HORIZONTAL TERMINAL SURFACE MOUNT STRIP ASSEM				MMT-1XX-XX-XX-XX-XX-XXX-X-XX	
TWO PLACE DECIMALS: ± .01	FOUR PLACE DECIMALS: ± .0020							SHEET 1 OF 3	

MMT-1XX-XX-XX-XX-XX-XXX-X-XX

NO. OF POSITIONS PER ROW
(-02 THRU -50)

LEAD STYLE

- 01: .126 [3.20] POST
- 02: .175 [4.45] POST (SEE TABLE 2)

PLATING SPECIFICATION

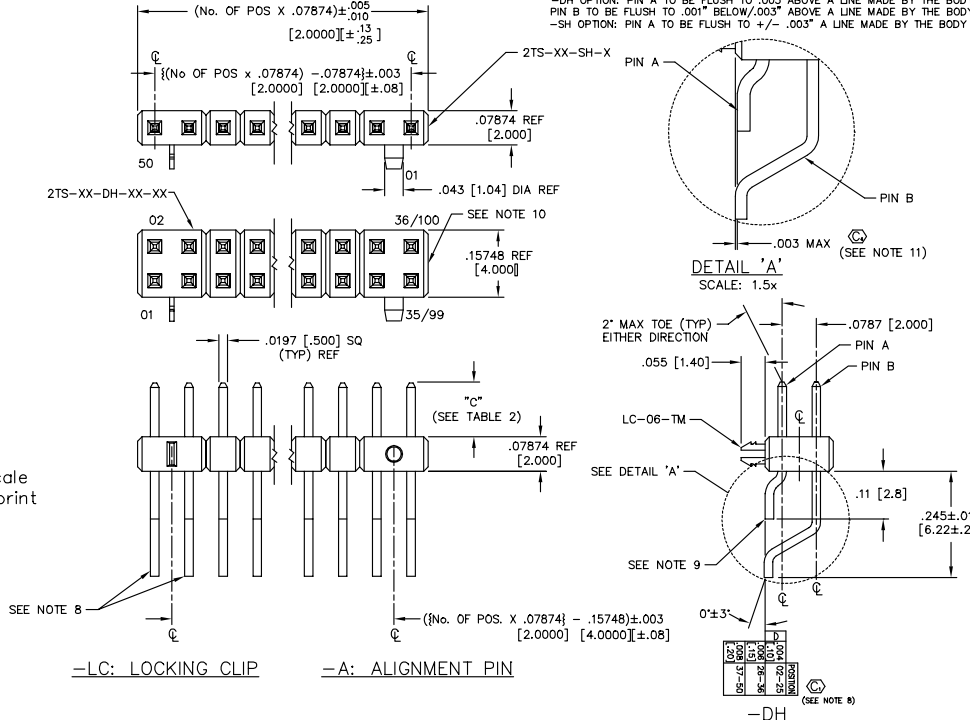
- H: HEAVY GOLD
- S: SELECTIVE
- L: LIGHT SELECTIVE
- F: FLASH SELECTIVE
- T: TIN
- SM: SELECTIVE GOLD, MATTE TIN TAIL
- LM: LIGHT SELECTIVE GOLD, MATTE TIN TAIL
- FM: FLASH SELECTIVE GOLD, MATTE TIN TAIL
- TM: MATTE TIN
- P: GOLD/PdNi SELECTIVE

ROW OPTION

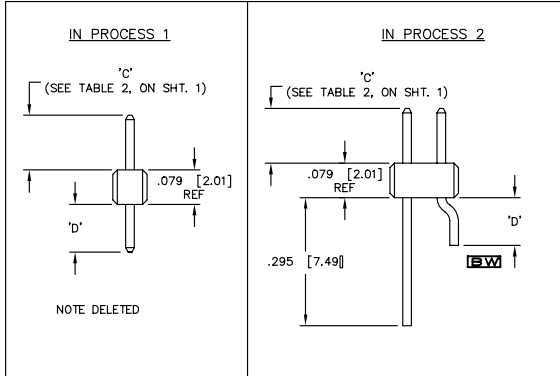
- SH: SINGLE (2TS-XX-SH-X-XX)
- DH: DOUBLE (2TS-XX-DH-XX-XX) (SEE NOTE 7)
- FOR 2 POSITION WITH -A OPTION, USE ASP-80676-01-S.
- MT: MIXED TECHNOLOGY (2TS-XX-DH-XX-XX) (NOT AVAILABLE WITH -LC, OR -A OPTIONS)

OPTION

- TR: TAPE AND REEL (SEE PAGE 3)
- P: PICK & PLACE PAD (USE PPP-13) (3 POSITION MINIMUM)
- XXX: POLARIZED POSITION -XXX SPECIFIES POSITION OMITTED (SEE POLARIZATION VIEW)
- LC: LOCKING CLIP (FOR -DH USE 2TS-XX-DH-LC-XX) (SEE NOTE 7) (FOR -SH USE 2TS-XX-SH)
- A: ALIGNMENT PIN (FOR -DH USE 2TS-XX-DH-A-XX) (SEE NOTE 7) (FOR -SH USE 2TS-XX-SH-A-XX)
- K: POLYAMIDE FILM PAD (SEE SHT. 2) (3 POS. MIN)



Do not scale from this print



-LC: LOCKING CLIP -A: ALIGNMENT PIN

-DH (SEE NOTE 8)

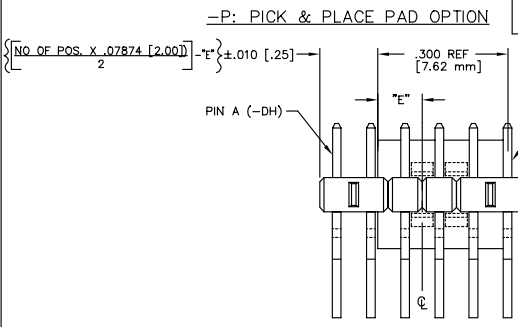
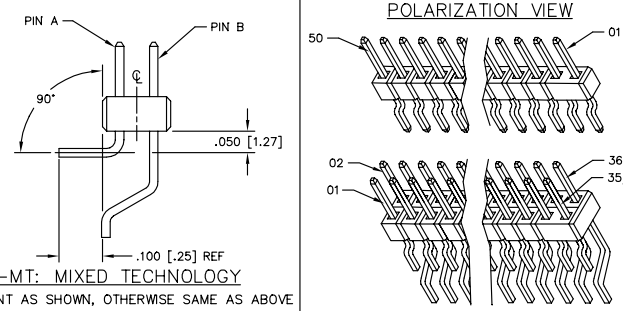


TABLE 1		
POS.	"E"	
ODD	.150	[.572]
EVEN	.111	[2.82]

PROPRIETARY NOTE
 THIS DOCUMENT CONTAINS INFORMATION OF A PROPRIETARY NATURE. IT IS THE PROPERTY OF SAMTEC INC. AND SHALL NOT BE REPRODUCED OR TRANSMITTED IN ANY FORM OR BY ANY MEANS, ELECTRONIC OR MECHANICAL, INCLUDING PHOTOCOPYING, RECORDING, OR BY ANY INFORMATION STORAGE AND RETRIEVAL SYSTEM, WITHOUT THE EXPRESS WRITTEN PERMISSION OF SAMTEC INC.