

- NOTES:
1. REPRESENTS A CRITICAL DIMENSION FOR STATISTICAL PROCESS CONTROL USE.
  2. ALL DIMENSIONS IN BRACKETS [ ] TO BE MILLIMETERS.
  3. TUBE POSITIONS -05 THRU -36 ONLY; POSITIONS -02 THRU -04 TO BE LAYER PACKAGED.
  4. .020 [51] MAX CUT FLASH, CUT FLASH TO BE IN A NON-CRITICAL AREA LOCATED BETWEEN BODIES.

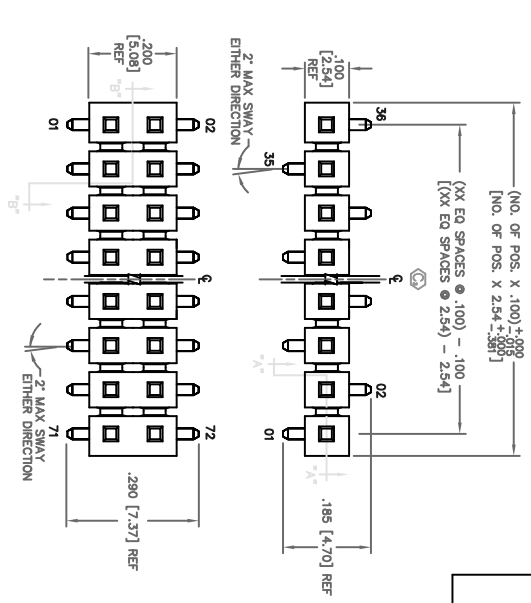
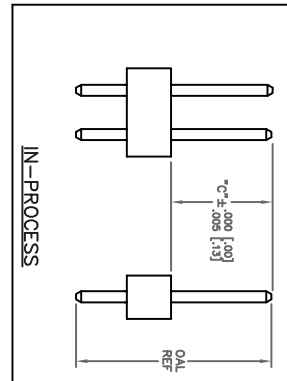


TABLE 1

LEAD STYLE	TERMINAL	"H" REF	"A" WHEN "B" IS .090 [2.29]	"C"	IN-PROCESS OAL REF
-08	T-1S6-08-XX-2	.465 [11.81]	.375 [9.53]	.315 [8.00]	.530 [13.46]
-09	T-1S6-09-XX-2	.665 [16.89]	.575 [14.61]	.515 [13.08]	.730 [18.54]
-10	T-1S6-10-XX-2	.765 [19.43]	.675 [17.15]	.615 [15.62]	.830 [21.08]
-11	T-1S6-11-XX-2	.865 [21.97]	.775 [19.69]	.715 [18.61]	.930 [23.62]
-12	T-1S6-12-XX-2	.965 [25.11]	.875 [22.23]	.815 [20.70]	1.030 [26.16]
-15	T-1S6-15-XX-2	.565 [14.35]	.475 [12.07]	.415 [10.54]	.630 [16.00]
-16	T-1S6-16-XX-2	.380 [9.65]	.290 [7.37]	.230 [5.84]	.445 [11.30]
-17	T-1S6-17-XX-2	.415 [10.54]	.325 [8.26]	.265 [6.73]	.480 [12.19]
-20	T-1S6-20-XX-2	1.065 [27.05]	.975 [24.77]	.915 [23.24]	1.130 [28.70]

PATENT NUMBERS  
6713755 / 5961399



MINIMUMS PER TO ORDER  
 MAXIMUMS PER TO ORDER  
 ONE PLACE DECIMALS ±.1 [3] THREE PLACE DECIMALS ±.005 [0.13] ANGLES ±2°  
 TWO PLACE DECIMALS ±.01 [3] FOUR PLACE DECIMALS ±.0020 [0.05] ±.2°

HW-XX-XX-XX-XX-XXXX-SM-X-XXX

REVISIONS  
 1. REVISION 1 (SEE FIG. 3)  
 2. REVISION 2 (SEE FIG. 3)  
 3. REVISION 3 (SEE FIG. 3)  
 4. REVISION 4 (SEE FIG. 3)  
 5. REVISION 5 (SEE FIG. 3)  
 6. REVISION 6 (SEE FIG. 3)  
 7. REVISION 7 (SEE FIG. 3)  
 8. REVISION 8 (SEE FIG. 3)  
 9. REVISION 9 (SEE FIG. 3)  
 10. REVISION 10 (SEE FIG. 3)

DATE: 10/20/93  
 TITLE: HW BOARD TO BOARD ASSEMBLY  
 DWG NO.: HW-XX-XX-XX-XX-XXXX-SM-X-XXX-SHEET 1 OF 1

DESIGNED BY: CTK/ERK  
 CHECKED BY: P/AE  
 DRAWN BY: CTK/ERK

520 PARK EAST BLDG. NEW ALBANY, INDIANA 47150  
 PHONE: (812) 844-6733 FAX: (812) 844-1147  
 CIRCLE 50232

EMERGENCY ASSISTANCE: 800-541-4000

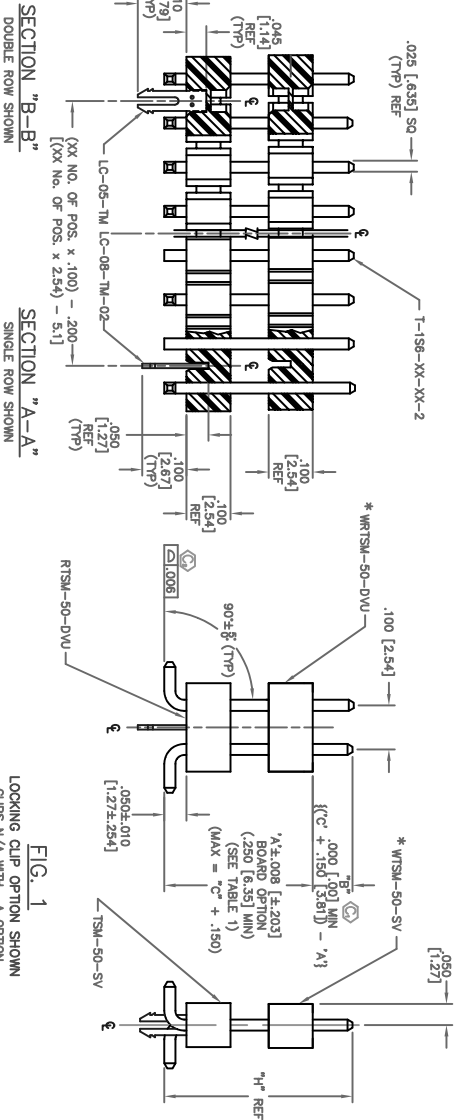


FIG. 1  
LOOKING CLIP OPTION SHOWN  
CLIPS N/A WITH -A OPTION.

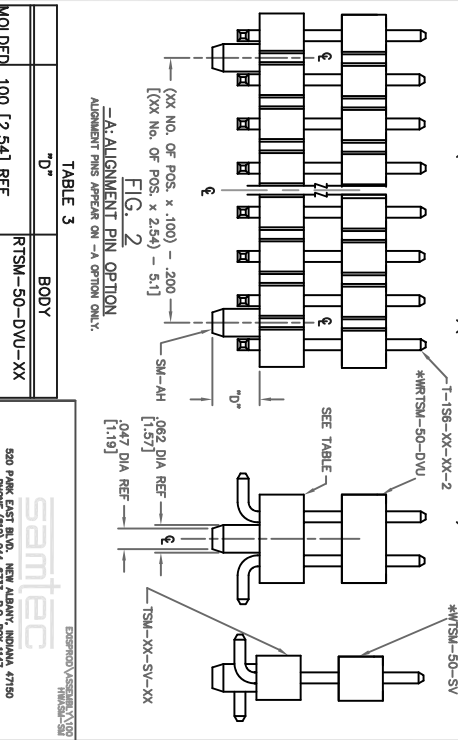


FIG. 2  
-A- ALIGNMENT PIN OPTION  
ALIGNMENT PINS APPEAR ON -A- OPTION ONLY.

DIFFERENT AS SHOWN, OTHERWISE SAME AS FIG. 1.  
 (02 POS USE 1 PER STRIP) (03-36 POS USE 2 PER STRIP)

NOTE: VIEW DRAWN TO SHOW LOCATION OF PLUG IN TUBE.

PACKAGING VIEW

TABLE 2

ROW OPTION	PACKAGE TUBE (SEE NOTE 3)	PLUG
-S- SINGLE	PT-1-24-01-47	TP-24
-D- DOUBLE	PT-1-24-02-47	TP-03
LEAD STYLE -20	PT-1-24-04-51	TP-13
LEAD STYLE -07	PT-1-24-08-03	TP-07

TABLE 3

TO ORDER	BODY
MOULDED .100 [2.54] REF	RTSM-50-DVU-XX
STAKED .100±.005 [2.45±.13] REF	TSM-XX-SV-XX
	RTSM-50-DVU

PROPRIETARY INFORMATION  
 THIS DOCUMENT IS THE PROPERTY OF SAMTEC CORPORATION  
 AND IS NOT TO BE REPRODUCED OR TRANSMITTED IN ANY FORM  
 OR BY ANY MEANS, ELECTRONIC OR MECHANICAL, INCLUDING  
 PHOTOCOPYING, RECORDING, OR BY ANY INFORMATION STORAGE  
 AND RETRIEVAL SYSTEM, WITHOUT THE WRITTEN PERMISSION  
 OF SAMTEC CORPORATION.