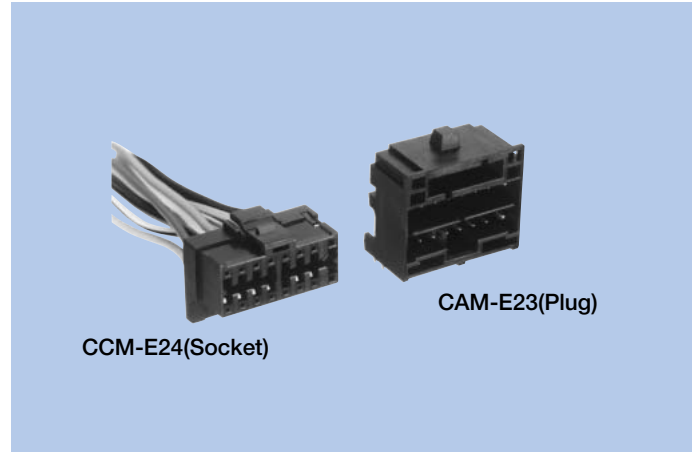


# Power Supply Voltage & Signal CAM-E23, CCM-E24

## FEATURES

1. These are 16-pole power supply connectors, with angle plugs.
2. A lock mechanism is provided, to ensure secure mating.
3. Plug connectors are designed to enable fuse installation.
4. Two poles are provided for power supply contacts; the other 14 poles are signal contacts.
5. The CAM-E23 has a reduced number of mounting poles to enhance freedom of board pattern design.



## HOW TO ORDER

### 1. CAM-E23 (Plug)

**E23-016-02 0-H J B A A**  
 1      2      3      4      5      6      7      8      9

- 1 Series No.(E23)
- 2 No. of contacts (016 : 16pins)
- 3 Housing material (02 : PBT resin)
- 4 UL grade (0 : UL94V-0)
- 5 Contact plating (H : Solder plating)
- 6 Contact plating thickness (J : 3.0 $\mu$ m)
- 7 Contact tail style (B : Angle)
- 8 Accessory for connector outside (A : None)
- 9 Accessory for connector inside (A : None)

### 2. CCM-E24 (Socket)

**E24-016-5888A**  
 1      2      3

- 1 Series No.(E24)
- 2 No. of contacts (016 : 16pins)
- 3 Product Specifications.

## SPECIFICATIONS

### ELECTRICAL CHARACTERISTICS

Rated Voltage	14V DC
Rated Current	Signal terminal : 3A (Power supply terminal : 10A)
Withstanding Voltage	500V AC (rms) 1 minute
Insulation Resistance	100M $\Omega$ min. (at 500V DC)
Contact Resistance	15m $\Omega$ max.

### MECHANICAL CHARACTERISTICS

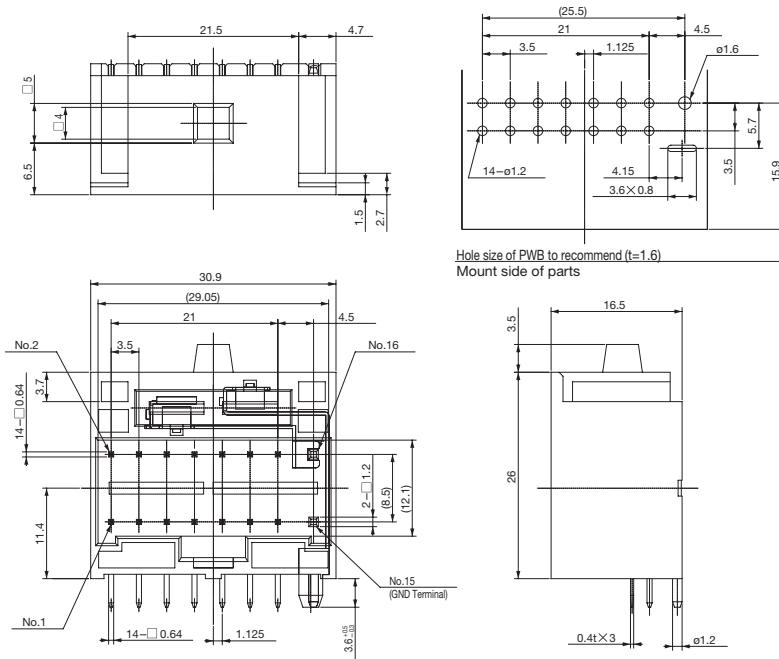
Life (Matching Cycle)	200 times
Total Insertion Force	78.4N (8kgf) max.
Total Withdrawal Force	9.8N (1.0kgf) min.
Using Temperature Range	-30~85°C

## MATERIAL & FINISH

Component Parts		Material	Finish
CAM-E23 (Plug)	Housing	Glass filled PBT resin	—
	Contact	Brass	Solder plating
	Fuse Terminal	Brass	Tin reflow plating
CCM-E24 (Socket)	Housing	46 Nylon resin	—
	Contact	Copper Alloy	Tin reflow plating

## DIMENSIONS

### CAM-E23 (Plug)



### CCM-E24 (Socket)

