



# SAW Components

Data Sheet B4031





**SAW Components**

**B4031**

**Low-Loss Filter**

**1575,42 MHz**

**Data Sheet**

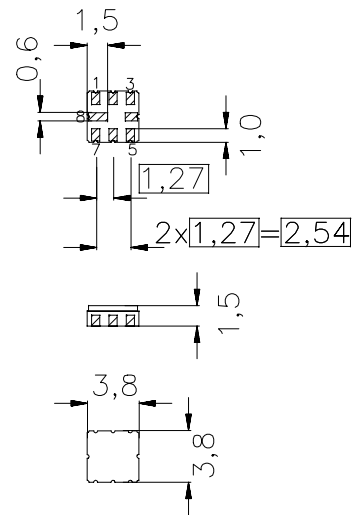
SMD ceramic package **QCC8B**

**Features**

- Low loss RF filter for GPS receivers
- Usable passband 2,4 MHz
- Unbalanced to balanced operation
- Package for **Surface Mounted Technology (SMT)**

**Terminals**

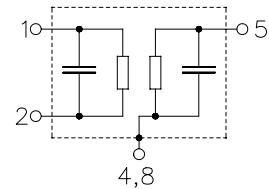
- Ni, gold-plated



Dimensions in mm, approx. weight 0,07

**Pin configuration**

- |         |                |
|---------|----------------|
| 1       | Output         |
| 2       | Output         |
| 5       | Input          |
| 3, 6, 7 | To be grounded |
| 4, 8    | Case - ground  |



Type	Ordering code	Marking and Package according to	Packing according to
B4031	B39162-B4031-Z810	C61157-A7-A46	F61074-V8037-Z000

Electrostatic Sensitive Device (ESD)

**Maximum ratings**

Operable temperature range	$T$	- 40/+ 85	°C	source impedance 50 $\Omega$
Storage temperature range	$T_{stg}$	- 40/+ 85	°C	
DC voltage	$V_{DC}$	0	V	
Source power	$P_s$	0	dBm	



**SAW Components**

**B4031**

**Low-Loss Filter**

**1575,42 MHz**

**Data Sheet**

**Characteristics**

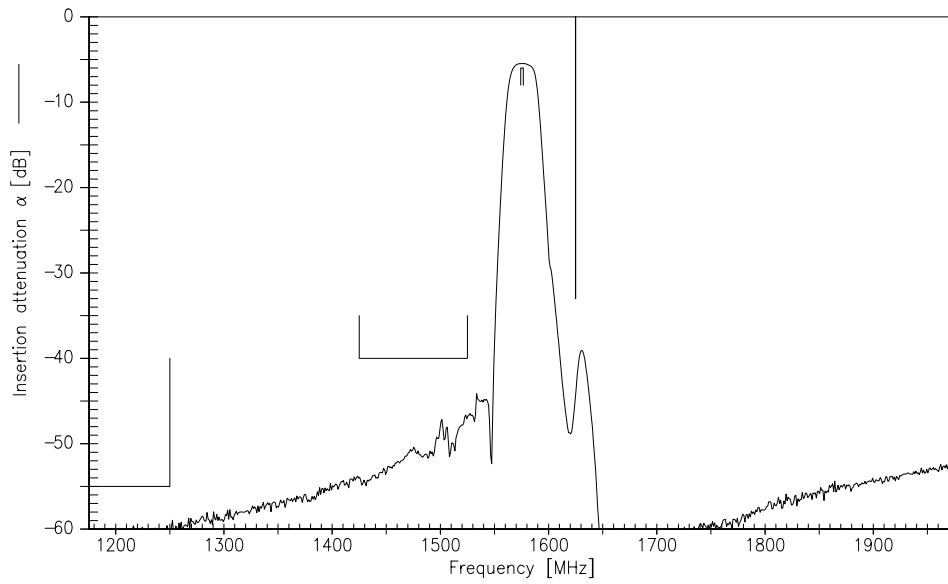
Operating temperature range:  $T = -40\text{ °C to }85\text{ °C}$   
 Terminating source impedance:  $Z_S = 50\ \Omega \parallel 0,3\text{ pF}$   
 Terminating load impedance:  $Z_L = 50\ \Omega \parallel 0,4\text{ pF}$

			min.	typ.	max.	
<b>Center frequency</b>	$f_c$		—	1575,42	—	MHz
<b>Maximum insertion attenuation</b>	$\alpha_{max}$		—	5,4	6,0	dB
		1574,22MHz ... 1576,62 MHz				
<b>Amplitude ripple in passband (p-p)</b>	$\Delta\alpha$		—	0,3	1,0	dB
		1574,22MHz ... 1576,62 MHz				
<b>Attenuation</b>	$\alpha$					
		0,0 MHz ... 1250,0 MHz	55	60	—	dB
		1425,0 MHz ... 1525,0 MHz	40	45	—	dB
		1625,0 MHz	33	39	—	dB
<b>DC resistance from any pin to ground</b>	R			5,6		k $\Omega$

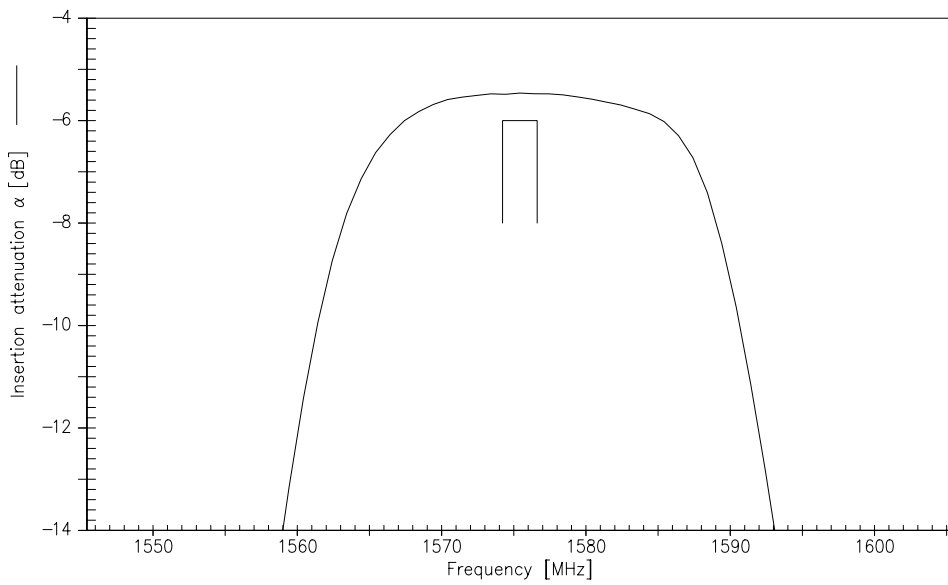


Data Sheet

Transfer function



Transfer function (pass band)





SAW Components

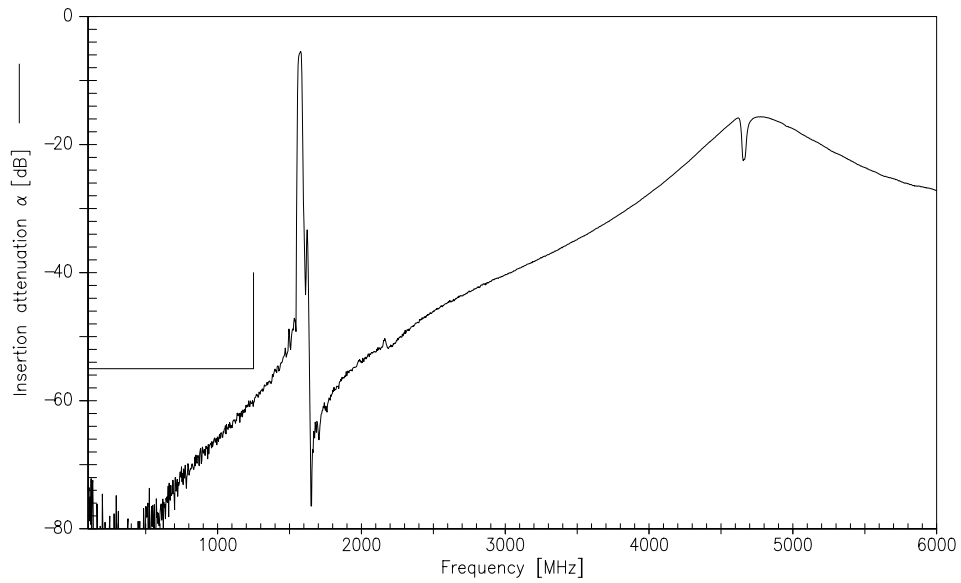
B4031

Low-Loss Filter

1575,42 MHz

Data Sheet

Transfer function (wideband)





**SAW Components**

**B4031**

**Low-Loss Filter**

**1575,42 MHz**

**Data Sheet**

**Published by EPCOS AG**  
**Surface Acoustic Wave Components Division, SAW MC IS**  
**P.O. Box 80 17 09, D-81617 München**

© EPCOS AG 1999. All Rights Reserved.

As far as patents or other rights of third parties are concerned, liability is only assumed for components per se, not for applications, processes and circuits implemented within components or assemblies.

The information describes the type of component and shall not be considered as assured characteristics.

Terms of delivery and rights to change design reserved.

For questions on technology, prices and delivery please contact the sales offices of EPCOS AG or the international representatives.

Due to technical requirements components may contain dangerous substances. For information on the type in question please also contact one of our sales offices.