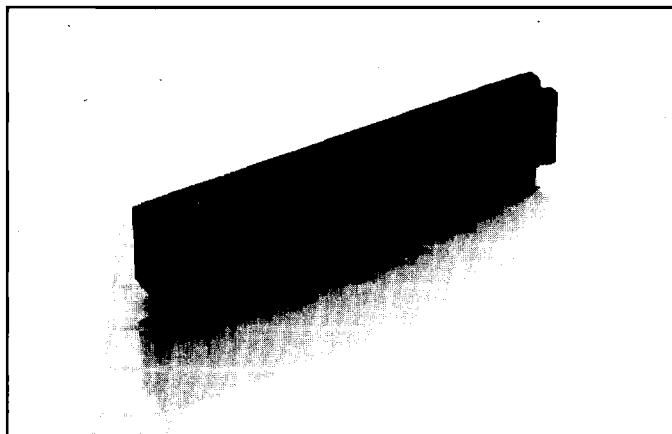


# .050" (1.27mm) Series 235, 236, 237 Ultra Thin Card Edge Connector

.050 (1.27) Centers

Card Edge

Dip Solder Terminals Without Mounting Ears



D

## PART NUMBER CODING

23X-21-XXXDS-XX

### CONTACT PLATING

**CONTACT SURFACE    TERMINATION**

20 = .000010 GOLD    .000100 TIN/LEAD

23 = .000030 GOLD    .000100 TIN/LEAD

ALL GOLD PLATED OVER .000050

NICKEL

FOR OTHER PLATINGS CONSULT  
FACTORY

### TERMINATION STYLE

DS = DIP SOLDER

### NUMBER OF CONTACTS

10 = 5/10

12 = 6/12

20 = 10/20

30 = 15/30

40 = 20/40

50 = 25/50

60 = 30/60

80 = 40/80

100 = 50/100

### SERIES DESCRIPTION

5 = IN LINE INTERNAL

6 = STAGGERED

7 = IN LINE EXTERNAL

## Features

- Ultra thin .488" x .281" wide
- High density miniature card edge connector with special tuning fork contact design
- Dual readout connector
- Terminal row spacing — see mounting patterns
- Nine circuit sizes: 5/10, 6/12, 10/20, 15/30, 20/40, 25/50, 30/60, 40/80 & 50/100
- Will accept printed circuit board thickness variation of .054" to .070" (1.37 to 1.78)
- Designed with test point capabilities
- Potential applications include standard and thin film memory planes, diodes on insulating substrates and virtually any type of modular plug-in unit
- Meets performance criteria of MIL-C-21097

## Specifications

**Operating Voltage:** 375 VAC rms at sea level

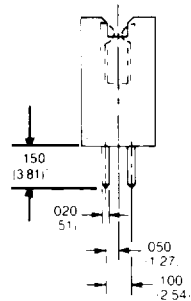
**Current Rating:** 1 Amp continuous

**Contact Resistance:** 6 milliohms, 30 millivolts at rated current

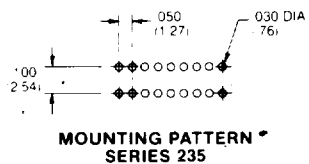
**Contact Material:** Copper alloy

**Contact Plating:** See part number coding

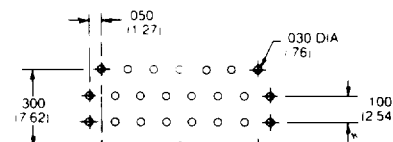
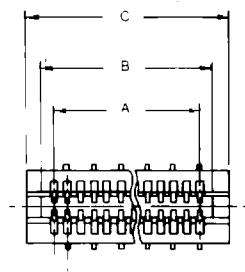
**Insulator Material:** Polyester glass filled, 94V-0 rated per MIL-M-24519, black



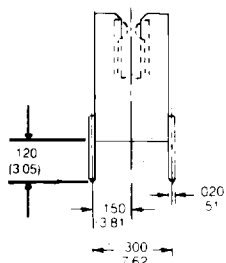
SERIES 235



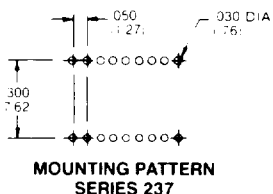
MOUNTING PATTERN  
SERIES 235



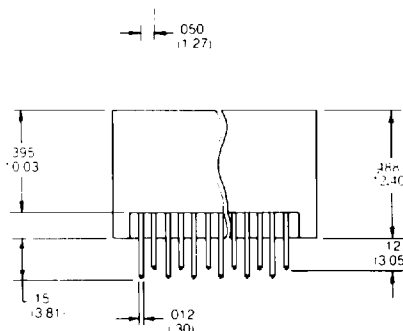
MOUNTING PATTERN  
SERIES 236



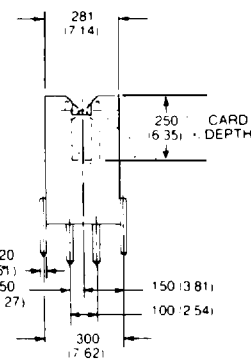
SERIES 237



MOUNTING PATTERN  
SERIES 237



SERIES 236



PART NUMBER	NUMBER OF CONTACTS	NUMBER OF CONTACTS		
		A	B	C
2XX-21-010DS-XX	10	.200 (5.08)	.300 (7.62)	.425 (10.80)
2XX-21-012DS-XX	12	.250 (6.35)	.350 (8.89)	.475 (12.07)
2XX-21-020DS-XX	20	.450 (11.43)	.550 (13.97)	.675 (17.15)
2XX-21-030DS-XX	30	.700 (17.78)	.800 (20.32)	.925 (23.50)
2XX-21-040DS-XX	40	.950 (24.13)	1.050 (26.67)	1.175 (29.85)
2XX-21-050DS-XX	50	1.200 (30.48)	1.300 (33.02)	1.425 (36.20)
2XX-21-060DS-XX	60	1.450 (36.83)	1.550 (39.37)	1.675 (42.55)
2XX-21-080DS-XX	80	1.950 (49.53)	2.050 (52.07)	2.175 (55.25)
2XX-21-100DS-XX	100	2.450 (62.23)	2.550 (64.77)	2.675 (67.95)

ALL DIMENSIONS ARE IN INCHES  
DIMENSIONS IN ( ) ARE IN MILLIMETERS

D