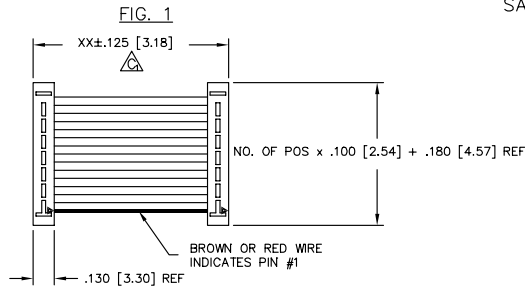


REVISION N
DO NOT SCALE
FROM THIS PRINT

UNLESS OTHERWISE NOTED
DIMENSIONS ARE IN INCHES
TOLERANCES ARE:
ONE PLACE DECIMALS ± .1
TWO PLACE DECIMALS ± .01
THREE PLACE DECIMALS ± .005
FOUR PLACE DECIMALS ± .0020
ANGLES ± 1°
TITLE: 100 C.L. MOLD TO POS. SINGLE ROW, MALE ASSEMBLY
DWG NO: HCMS-XX-X-XX-XX-XXX-XXX
SHEET 1 OF 1

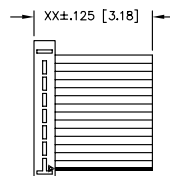
-D (DOUBLE END)



NOTE:
SUB-ASSEMBLY 1 OR 3 TO BE PRESSED TOGETHER WITH NO GAPS BETWEEN CABLE & BODIES.

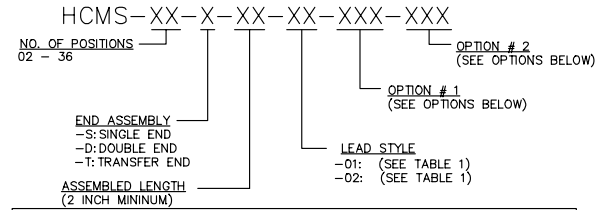
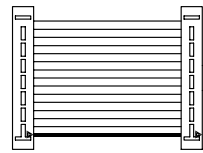
-S (SINGLE END)

SAME AS FIG. 1 UNLESS OTHERWISE SHOWN



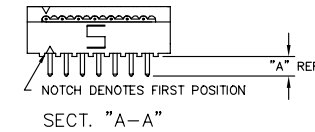
-T (TRANSFER END)

SEE NOTE 2
SAME AS FIG. 1 UNLESS OTHERWISE SHOWN



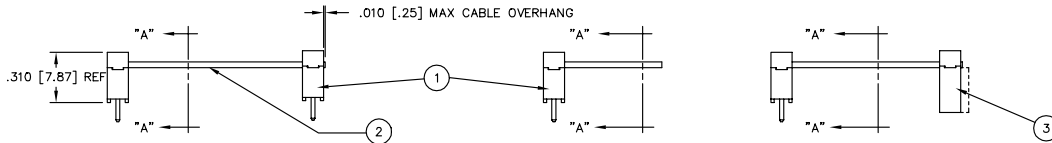
LEAD STYLE	"A"	1	2	3 (-T END ONLY)
-01	.120 [3.05]	HCMS-XX-01-X	CB-XX-28-7/36-100-C	HCSS-XX-01-X
-02	.230 [5.84]	HCMS-XX-02-X	CB-XX-28-7/36-100-C	HCSS-XX-01-X

SPECIFY NO. OF POS. IN PART CALLOUT -XX



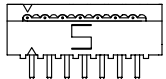
- NOTES:
- IF OPTION IS SPECIFIED WITH -T END ASSEMBLY, SUB-ASSEMBLIES B & C WILL BE HCSS-XX-01-X.
 - HIDDEN LINES ARE USED TO SHOW POLARIZATION WHEN USING -T OPTION.
 - △ REPRESENTS CRITICAL DIMENSION FOR STATISTICAL PROCESS CONTROL.
 - ALL ASSEMBLIES TO BE 100% ELECTRICALLY TESTED FOR SHORTS AND OPENS.
 - ALL ASSEMBLIES TO BE 100% HI-POT TESTED AT 1000V.

PLATING
-T = .00150 BRIGHT ACID TIN ON ENTIRE CONTACT. (USED ONLY WITH FEMALE STRIP OF A -T END OPTION - USE HCSS-XX-01-TX.)
-S = .00010 Au. ON TAIL AREA WITH THE BALANCE OF .00150 BRIGHT ACID TIN - USE HCMS-XX-XX-S. (DO NOT USE WITH HCSS-XX-01-T-X.)
(STANDARD PLATING IS .000150 BRIGHT ACID TIN OVER ENTIRE TERMINAL - USE HCMS-XX-XX-T. FOR A -T OPTION, STANDARD PLATING FOR THE FEMALE END IS .000150 BRIGHT ACID TIN, EXCEPT CONTACT AREA IS .00010 Au. - USE HCSS-XX-01-SX.)

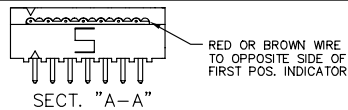


-G GRAY CABLE

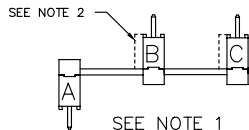
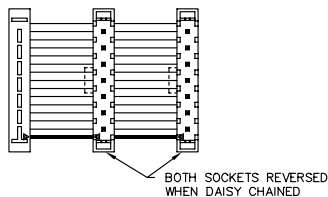
SUBSTITUTE GRAY CABLE FOR STANDARD COLOR CODED CABLE
USE: CB-XX-28-7/36-100-G



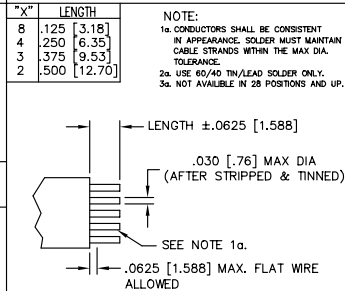
-RW REVERSE WIRING



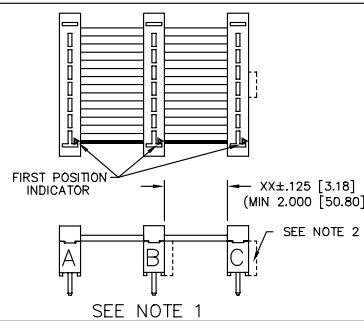
-R REVERSED CONNECTOR



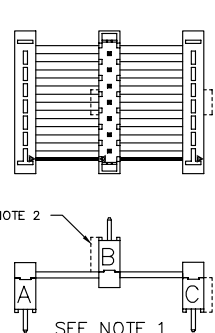
-ST"X" STRIPPED & TINNED



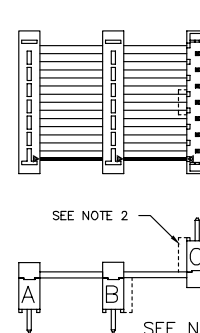
-SXX DAISY CHAIN- SINGLE



-M MIDDLE REVERSED

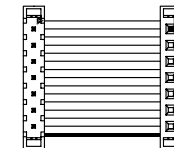


-O OUTSIDE REVERSED



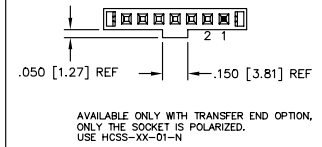
-PXX

XX = POSITION NO.
INSERT POLARIZING KEY PART NO. PK-06-N INTO SPECIFIED POSITION -XX

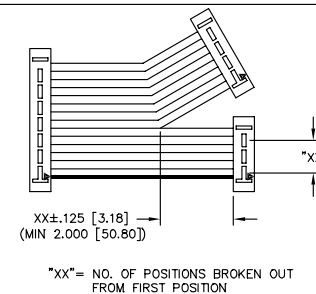


NOTE:
OPTION ONLY AVAILABLE ON FEMALE END OF THE -T (TRANSFER END) OPTION
THE POLARIZED POSITION WILL HAVE THE SAME ELECTRICAL POSITION FROM THE BROWN WIRE FIRST POSITION INDICATOR.

-N NOTCH POLARIZATION



-BXX BREAKOUT OPTION



PROPRIETARY NOTE
THIS DOCUMENT CONTAINS INFORMATION CONFIDENTIAL AND PROPRIETARY TO SAMTEC INC. AND SHALL NOT BE REPRODUCED OR TRANSMITTED IN ANY FORM OR BY ANY MEANS, ELECTRONIC OR MECHANICAL, INCLUDING PHOTOCOPYING, RECORDING, OR BY ANY INFORMATION STORAGE AND RETRIEVAL SYSTEM, WITHOUT THE WRITTEN CONSENT OF SAMTEC INC.

samtec
520 PARK EAST BLVD. NEW ALBANY, INDIANA 47150
PHONE (812) 944-6733 P.O. BOX 1147
CODE 55322
EPCABLE
HCMS-ASM