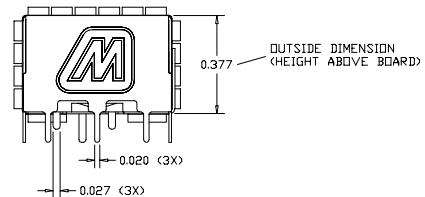
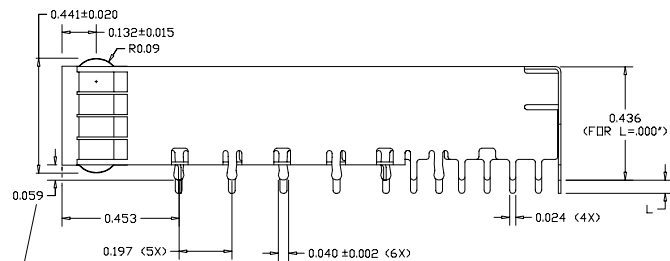
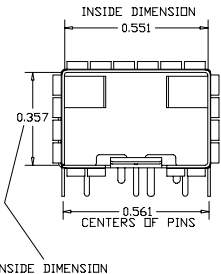


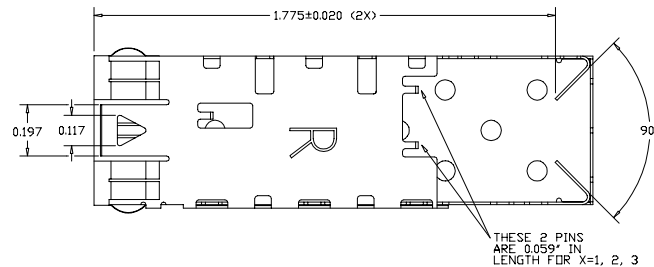
REVISION AND CHANGE EFFECTIVITY DATE				
LTR.	ECN	DESCRIPTION	DATE	APP'D.

NOTES:

- 1) OPERATING AND STORAGE TEMPERATURE: -40°C TO +160°C
- 2) CAGE MATERIAL: 0.010" THICK BRASS ALLOY; C2680 - FULL HARD
- 3) PLATING: SEE PLATING OPTIONS
- 4) CAGE IS SOLDERED AT SEAM AT 5 LOCATIONS
- 5) CAGE IS STAMPED "R" FOR RoHS COMPLIANCE
- 6) GASKET: 0.002" THICK BERYLLIUM COPPER WITH NICKEL PLATING
- 7) GASKET IS SPOT WELDED ONTO CAGE



MINIMUM PIN LENGTH  
(FOR L=.000')



ORDERING INFO:

DM7054-S-X-P

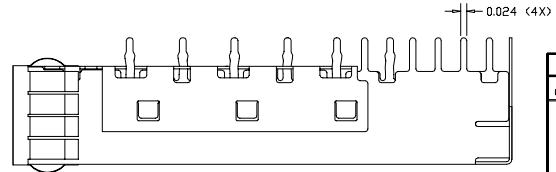
SERIES

PLATING OPTIONS:  
(ALL ARE RoHS COMPLIANT)

- R FOR 100µIN MATTE TIN OVER 50µIN NICKEL  
NOT INTENDED FOR REFLOW  
WAVE SOLDER ONLY - WAVE TEMP. 260°C FOR 6 SEC. MAX  
RoHS COMPLIANT
- G FOR FLASH GOLD OVER 50µIN NICKEL  
REFLOW COMPATIBLE - MAX REFLOW TEMP. 260°C  
RoHS COMPLIANT
- N FOR 100µIN NICKEL  
REFLOW COMPATIBLE - MAX REFLOW TEMP. 260°C  
RoHS COMPLIANT

- 1 - L = .000' (RECOMMENDED PCB THICKNESS OF LESS THAN .055)
- 2 - L = .021' (RECOMMENDED PCB THICKNESS BETWEEN .056-.078)
- 3 - L = .051' (RECOMMENDED PCB THICKNESS BETWEEN .079-.108)

DENOTES SOLDERABLE PINS

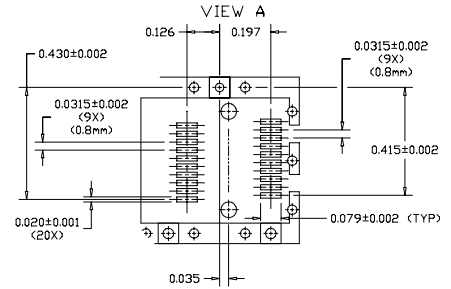
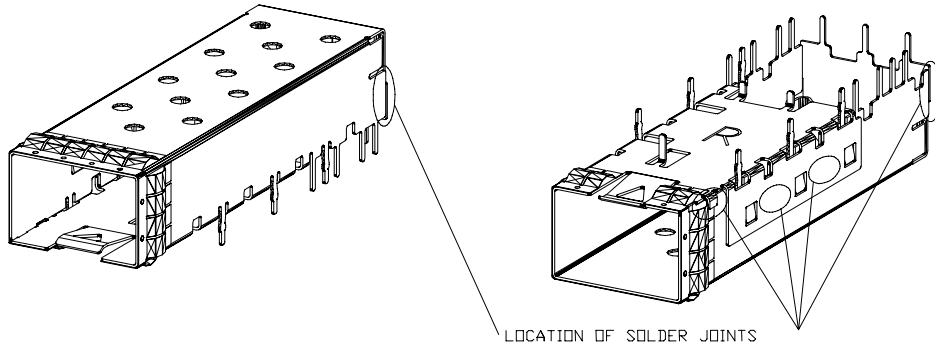


DO NOT SCALE DRAWING.

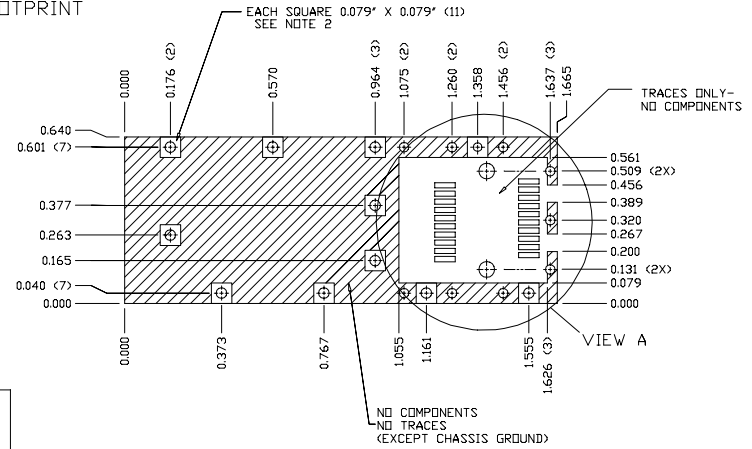
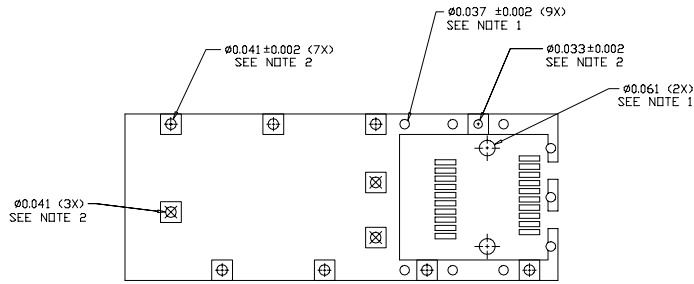
EXPERIMENTAL NO:		DIVISION ASSIGNED: <b>dataMate Division</b>	
TOLERANCE UNLESS OTHERWISE SPECIFIED	MATERIAL:	DRAWN BY:	DATE:
METRIC INCHES	SEE NOTES	A. PIRLLIS	09/14/07
± FRACTION		CHECKED BY:	
± DEC. XX ± .010		B. SKEPNEK	09/14/07
± XXX ± .005		ENGR. APPROVAL:	
± ANGLES ±	FINISH:	J. NOWAK	09/14/07
TOOLING DWG <input type="checkbox"/>		APPROVED BY:	
PART DWG <input type="checkbox"/>		A. CHIAPPETTA	09/14/07
BREAK SHARP EDGES <input type="checkbox"/>		PART NO. CLASSIFICATION:	
REMOVE ALL BURRS <input type="checkbox"/>			
<small>THE INFORMATION DISCLOSED IN THIS DOCUMENT IS PROPRIETARY TO METHODE ELECTRONICS, INC. AND MAY NOT BE USED FOR MANUFACTURE OR ANY OTHER PURPOSE WITHOUT THE WRITTEN CONSENT OF METHODE. DRILLS SUBJECT TO CHANGE AS THEY MAY CHANGE WITH RESPECT TO PRODUCT IMPROVEMENT.</small>		TITLE: SFP+ CAGE - ONE PIECE (IMPROVED) WITH GASKET SOLDERABLE PINS	SIZE: <b>C</b>
		CODE IDENT. DWG. NUMBER DM7054-S-X-P	Rev.
		SCALE:	SH1.1 OF 2



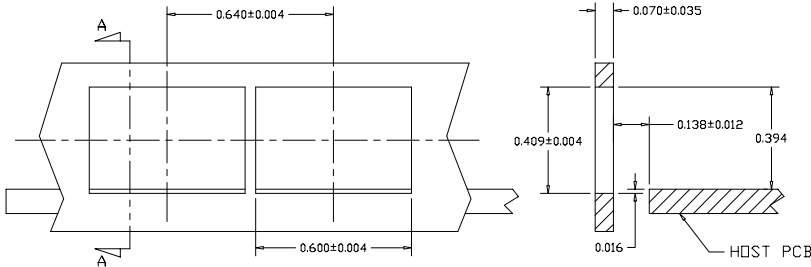
REVISION AND CHANGE EFFECTIVITY DATE				
LTR.	ECN	DESCRIPTION	DATE	APP'D.



RECOMMENDED FOOTPRINT



RECOMMENDED PANEL CUTOUT



NOTES:

- 1) THRU HOLES, PLATING OPTIONAL
- 2) PADS AND VIAS ARE CHASSIS GROUND, 11 PLACES

DO NOT SCALE DRAWING.		<div style="text-align: right;"> </div>	
EXPERIMENTAL NO:		DIVISION ASSIGNED: <b>dataMATE Division</b>	
TOLERANCE: UNLESS OTHERWISE SPECIFIED METRIC: FRACS: DEC: XX ± .010, XXX ± .005, ANGLES ± TOOLING DWG: □ PART DWG: □ BREAK SHARP EDGES, REMOVE ALL BURRS		MATERIAL: SEE NOTES FINISH:	
DRAWN BY: A. PIRLLIS 09/14/07 CHECKED BY: B. SKEPNEK 09/14/07 ENGR. APPROVAL: J. NOWAK 09/14/07 APPROVED BY: A. CHIAPPETTA 09/14/07		DATE: 09/14/07 	
TITLE: SFP+ CAGE - ONE PIECE (IMPROVED) WITH GASKET SOLDERABLE PINS		SIZE: C	
PART NO. CLASSIFICATION:		CODE IDENT.:	
DWG. NUMBER: DM7054-S-X-P		Rev.:	
SCALE:		SHI. 2 OF 2	