

New Jersey Semi-Conductor Products, Inc.

20 STERN AVE.
 SPRINGFIELD, NEW JERSEY 07081
 U.S.A.

TELEPHONE: (201) 376-29
 (212) 227-60
 FAX: (201) 376-89

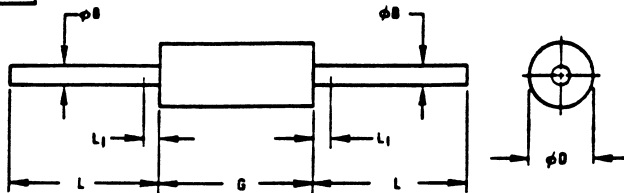
PARAMETERS

1N3470
 GERMANIUM DIODE

Description: Germanium Diode

Manufacturer..... many
 Mil/High-Rel? (Y/N).....
 I(out) (If AVG) Max..... 85m
 VRRM..... 35
 1-Cycle Surge Current (A).....
 Vf Max..... 1.0
 @If (test)..... 600m
 Ir @25xC..... 30u
 @Volts (test) (V)..... 20
 Ir @ Diff. Temp (A)..... 100u
 @Temp (test) (xC)..... 25
 Oper. Temp (xC) Max..... 90
 Pkg Style..... DO-7
 Surface Mounted (Y/N)..... N

DO7



MILLIMETER DIMENSIONS ARE DERIVED FROM ORIGINAL INCH DIMENSIONS

SYMBOL	INCHES		MILLIMETERS		NOTES
	MIN.	MAX.	MIN.	MAX.	
BB	.018	.022	0.458	0.558	-
BD	.085	.107	2.16	2.71	1
G	.230	.300	5.85	7.62	1
L	1.000	-	25.40	-	-
L1	-	.050	-	1.27	2

NOTES:

1. PACKAGE CONTOUR OPTIONAL WITHIN CYLINDER OF DIAMETER BD AND LENGTH G. SLUGS, IF ANY, SHALL BE INCLUDED WITHIN THIS CYLINDER BUT SHALL NOT BE SUBJECT TO THE MINIMUM LIMIT OF BD.
2. LEAD DIAMETER NOT CONTROLLED IN THIS ZONE TO ALLOW FOR FLASH, LEAD FINISH BUILD-UP, AND MINOR IRREGULARITIES OTHER THAN SLUGS.



Quality Semi-Conductors