

FIG. 1 THROUGH HOLE/STRAIGHT MODIFIED

DIFFERENT AS SHOWN OTHERWISE SAME AS FIG. 1

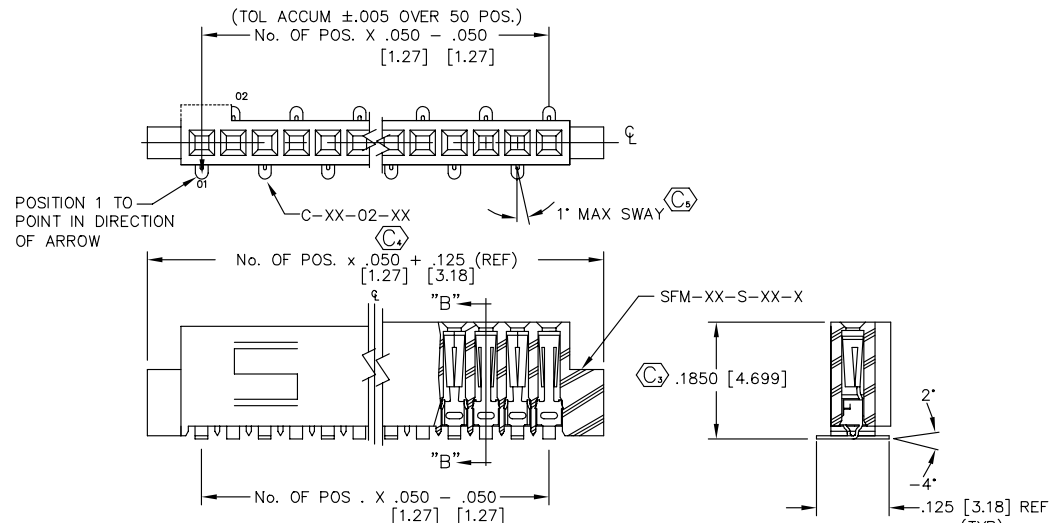


FIG. 2 -02: SURFACE MOUNT

- SFM-1XX-XX-XX-S-XX
- NO. OF POSITIONS
 ALL POSITIONS AVAILABLE -5 THRU -50
 USE BODY: (SFM-XX-S-XX-X)
- LEAD STYLE
- 01: THROUGH HOLE USE CONTACT: (C-44-01-XX) (SEE FIG. 1)
 - 02: SURFACE MOUNT USE CONTACT: (C-44-02-XX) (SEE FIG. 2)
 - 03: STRAIGHT MODIFIED USE CONTACT: (C-44-03-XX) (SEE FIG. 1)
 - L1: THROUGH HOLE (LOW INSERTION) USE CONTACT: (C-61-01-XXX) (SEE FIG. 1)
 - L2: SURFACE MOUNT (LOW INSERTION) USE CONTACT: (C-61-02-XXX) (SEE FIG. 2)
 - L3: STRAIGHT MODIFIED (LOW INSERTION) USE CONTACT: (C-61-03-XXX) (SEE FIG. 1)
 - T1: THROUGH HOLE (PHOS BRONZE) USE CONTACT: (C-119-01-XXX) (SEE FIG. 1)
 - T2: SURFACE MOUNT (PHOS BRONZE) USE CONTACT: (C-119-02-XXX) (SEE FIG. 1)
- OPTIONS
- (LEAVE BLANK FOR STANDARD AND USE SFM-XX-S-LC-X)
 - N: NO POLARIZATION NOTCH (USE SFM-XX-S-XX-N)
 - A: ALIGNMENT PIN (USE SFM-XX-S-A-X) (SEE FIGURE 3)
 - LC: LOCKING CLIP (SEE FIGURE 5) (USE (2) LC-05-TM & SFM-XX-S-LC-X)
 - P: PICK AND PLACE PAD (SEE FIGURE 4) USE PPP-14
 - K: POLYAMIDE FILM (SEE FIG. 6, SHT. 2)
- BODY SPECIFICATION
- PLATING SPECIFICATION
- S: SELECTIVE - SPECIFY -S IN PLATING SUFFIX -X (USE C-XX-XX-S)
 - P: FLASHED GOLD PALLADIUM NICKEL -SPECIFY -P IN PLATING SUFFIX -X (USE C-XX-XX-P)
 - F: FLASH SELECTIVE GOLD -SPECIFY -F IN PLATING SUFFIX -X (USE C-XX-XX-F)
 - L: SELECTIVE LIGHT GOLD -SPECIFY -L IN PLATING SUFFIX -X (USE C-XX-XX-L)
 - SM: SELECTIVE - SPECIFY -S IN PLATING SUFFIX -X/MATTE TIN TAILS (USE C-XX-XX-S)
 - FM: FLASH SELECTIVE GOLD -SPECIFY -F IN PLATING SUFFIX -X/MATTE TIN TAILS (USE C-XX-XX-F)
 - LM: SELECTIVE LIGHT GOLD -SPECIFY -L IN PLATING SUFFIX -X/MATTE TIN TAILS (USE C-XX-XX-L)

TABLE 1

SUFFIX	TAIL LENGTH "A"	TAIL WIDTH "B"
-01, -L1	.120 [3.05]	.020 [.51]
-03, -L3	.075 [1.91]	.016 [.41]

- NOTES:
1. MIN. PUSHOUT FORCE: .5 lb.
 2. COPLANARITY TO BE WITHIN .004 [.10].
 3. (C) REPRESENTS CRITICAL DIMENSION FOR STATISTICAL PROCESS CONTROL.
 4. TUBE ALL POSITIONS.

PLOT SCALE: 1=.15

MATERIAL:
 INSULATOR:
 LIQUID CRYSTAL POLYMER
 CONTACT:
 BeCu



EXISPROD\ASSEMBLY\050 SFMASMS1
 520 PARK EAST BLVD. NEW ALBANY, INDIANA 47150
 PHONE (812) 944-6733 P.O. BOX 1147
 CODE 55322

MADE BY: REIDINGER 9-8-92
 CHECKED BY: McCARTIN
 ENG. APPROVAL: DEM
 SFM-1XX-XX-XX-S-XX
 SHEET 1 OF 2

PROPRIETARY NOTE
 THIS DOCUMENT CONTAINS INFORMATION CONFIDENTIAL AND PROPRIETARY TO SAMTEC INC. AND SHALL NOT BE REPRODUCED OR TRANSMITTED TO OTHER DOCUMENTS OR DISCLOSED TO OTHERS OR USED FOR ANY PURPOSE OTHER THAN THAT FOR WHICH IT WAS OBTAINED WITHOUT THE EXPRESSED WRITTEN CONSENT OF SAMTEC INC.