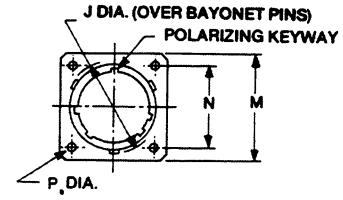
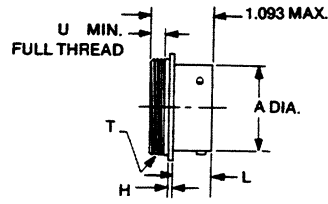
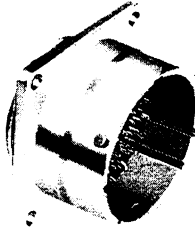


Wall Mount

MS27469

KJLOY

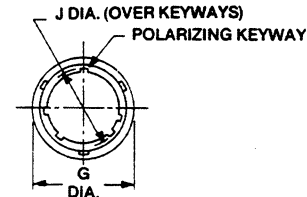
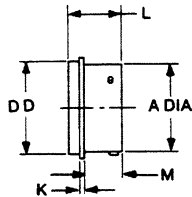


Shell Size	A Max.	H Max.	J Max.	L Max.	M ± .016	N ± .005	P Max.	T Thread	U
9	.573 (14.55)	.093 (2.36)	.662 (16.81)	.690 (17.53)	.938 (23.83)	.719 (18.26)	.138 (3.51)	.6875-24 UNEF-2A	.250 (6.35)
11	.701 (17.81)	.093 (2.36)	.810 (20.57)	.690 (17.53)	1.031 (26.19)	.812 (20.62)	.138 (3.51)	.8125-20 UNEF-2A	.250 (6.35)
13	.851 (21.62)	.093 (2.36)	.960 (24.38)	.690 (17.53)	1.125 (28.58)	.906 (23.01)	.138 (3.51)	.9375-20 UNEF-2A	.250 (6.35)
15	.976 (24.79)	.093 (2.36)	1.085 (27.56)	.690 (17.53)	1.219 (30.96)	.969 (24.62)	.138 (3.51)	1.0625-18 UNEF-2A	.250 (6.35)
17	1.101 (27.97)	.093 (2.36)	1.210 (30.73)	.690 (17.53)	1.312 (33.32)	1.062 (26.97)	.138 (3.51)	1.1875-18 UNEF-2A	.250 (6.35)
19	1.208 (30.68)	.093 (2.36)	1.317 (33.45)	.690 (17.53)	1.438 (36.53)	1.156 (29.36)	.138 (3.51)	1.3125-18 UNEF-2A	.250 (6.35)
21	1.333 (33.86)	.093 (2.36)	1.442 (36.63)	.690 (17.53)	1.562 (39.67)	1.250 (31.75)	.138 (3.51)	1.4375-18 UNEF-2A	.250 (6.35)
23	1.458 (37.03)	.093 (2.36)	1.567 (39.80)	.690 (17.53)	1.688 (42.88)	1.375 (34.92)	.157 (3.99)	1.5625-18 UNEF-2A	.250 (6.35)
25	1.583 (40.21)	.093 (2.36)	1.692 (42.98)	.690 (17.53)	1.812 (46.02)	1.500 (38.10)	.157 (3.99)	1.6875-18 UNEF-2A	.250 (6.35)

Solder Mount

MS27471

KJL1Y



Shell Size	A Max.	D Max.	G Max.	J Max.	K Max.	L Max.	M Max.
9	.573 (14.55)	.673 (17.09)	.766 (19.46)	.497 (12.62)	.047 (1.19)	.924 (23.47)	.690 (17.53)
11	.701 (17.81)	.782 (19.86)	.860 (21.84)	.625 (15.88)	.047 (1.19)	.924 (23.47)	.690 (17.53)
13	.851 (21.62)	.907 (23.04)	.985 (25.02)	.774 (19.66)	.047 (1.19)	.924 (23.47)	.690 (17.53)
15	.976 (24.79)	1.032 (26.21)	1.111 (28.22)	.899 (22.83)	.047 (1.19)	.924 (23.47)	.690 (17.53)
17	1.101 (27.97)	1.157 (29.39)	1.234 (31.34)	1.024 (26.01)	.047 (1.19)	.924 (23.47)	.690 (17.53)
19	1.208 (30.68)	1.251 (31.78)	1.328 (33.73)	1.129 (28.68)	.047 (1.19)	.924 (23.47)	.690 (17.53)
21	1.333 (33.86)	1.376 (34.95)	1.454 (36.93)	1.254 (31.85)	.047 (1.19)	.924 (23.47)	.690 (17.53)
23	1.458 (37.03)	1.501 (38.13)	1.579 (40.11)	1.379 (35.03)	.047 (1.19)	.955 (24.26)	.690 (17.53)
25	1.583 (40.21)	1.626 (41.30)	1.704 (43.28)	1.504 (38.20)	.047 (1.19)	.955 (24.26)	.690 (17.53)