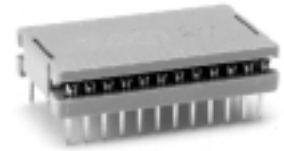


DIP PLUGS LOW PROFILE 24 TO 48 POSITION



LR92984 E60980



PHYSICAL PROPERTIES

INSULATION MATERIAL: Glass filled thermoplastic rated UL 94V-0

COLOR: Blue

CONTACTS: Beryllium copper; 30μ inches min. gold over 50μ inches nickel in contact zone; tin/lead over nickel in termination area.

ELECTRICAL PROPERTIES

CURRENT RATING: 1 Amp

INSULATION RESISTANCE: >1 x 10⁹ Ohms

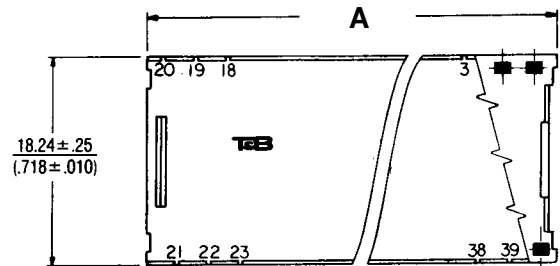
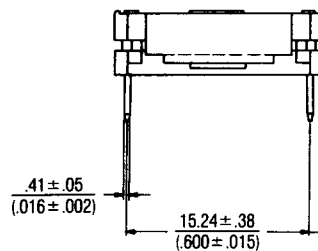
DIELECTRIC STRENGTH: >1000 VRMS at sea level

ENVIRONMENTAL PROPERTIES

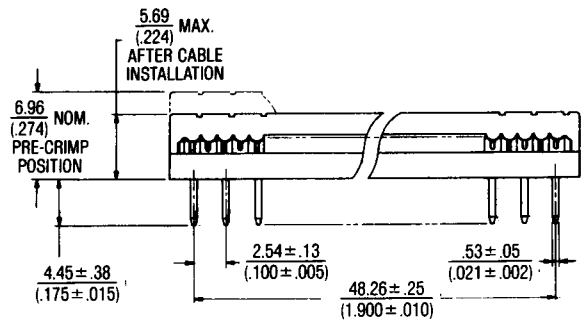
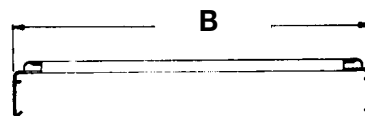
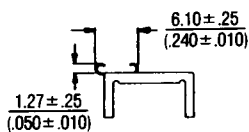
TEMPERATURE RATING: -55°C TO 125°C

CABLE

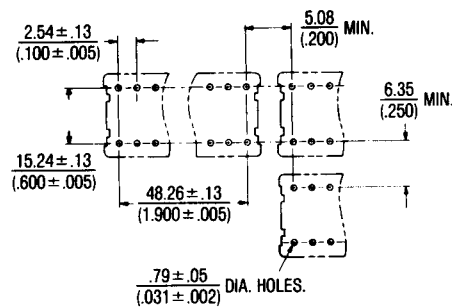
See pages 116-128



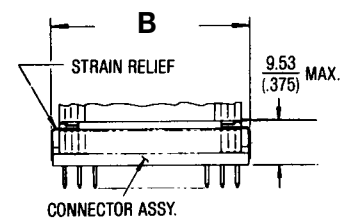
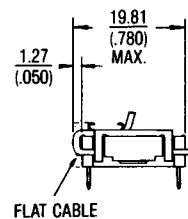
STRAIN RELIEF



RECOMMENDED MOUNTING HOLE PATTERN



CONNECTOR ASSEMBLY WITH STRAIN RELIEF



Ordering Information

NO. OF POSITIONS	CATALOG NO. BY CONTACT STYLE			DIMENSIONS	
	GOLD OVER NICKEL	TIN OVER NICKEL	STRAIN RELIEF	A	B
24	609-M245H	609-M245TH	609-M245S	32.00 ± .25 (1.260 ± .010)	32.00 ± .25 (1.260 ± .010)
40	609-M407H	609-M407TH	609-M407S	52.83 ± .25 (2.080 ± .010)	52.45 ± .25 (2.065 ± .010)
48	609-M485H	609-M485TH	609-M485S	62.63 ± .25 (2.466 ± .010)	—