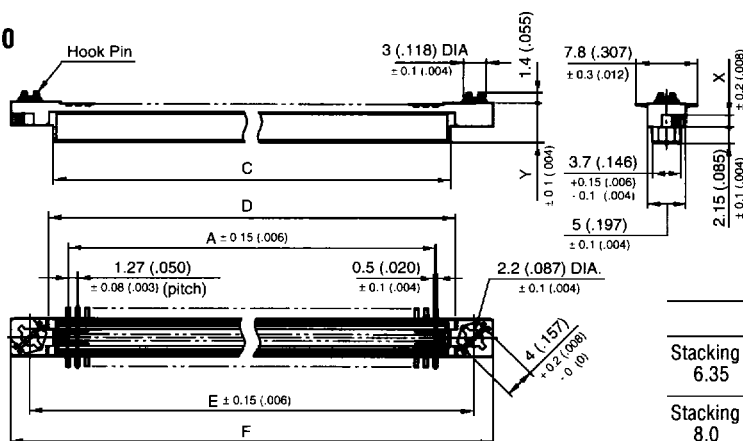




# SX SERIES CONNECTORS

## 1.27mm (.050") Contact Spacing, PCB-to-PCB SMT Connectors

### RECEPTACLE SX 10

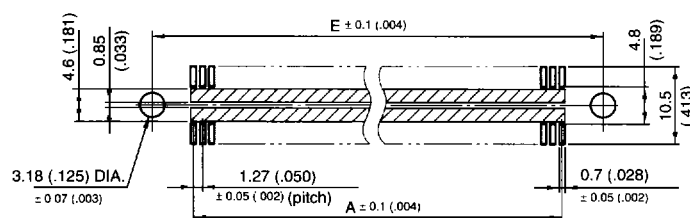
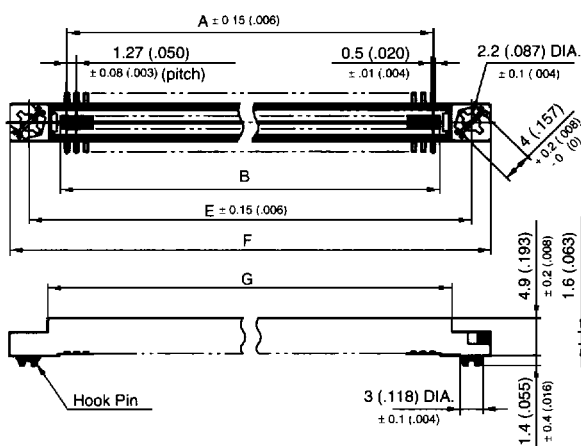


	Dimension X	Dimension Y
Stacking Height 6.35 (.025)	1.6 (.063)	5.25 (.207)
Stacking Height 8.0 (.315)	3.25 (.128)	6.9 (.272)

No. of Contacts	Part Number		A	C ±0.15 (.006)	D ±0.15 (.006)	E	F ±0.3 (.012)
	Stacking Height						
	6.35mm (.25")	8.0mm (.315")					
20	SX10- 20R-25SF-MH1-1	SX10- 20R-38SF-MH1-1	11.43 (.450)	15.63 (.615)	16.63 (.655)	21.59 (.850)	26.39 (1.039)
30	SX10- 30R-25SF-MH1-1	SX10- 30R-38SF-MH1-1	17.78 (.700)	21.98 (.865)	22.98 (.905)	27.94 (1.100)	32.74 (1.289)
40	SX10- 40R-25SF-MH1-1	SX10- 40R-38SF-MH1-1	24.13 (.950)	28.13 (1.107)	29.33 (1.155)	34.29 (1.350)	39.09 (1.539)
50	SX10- 50R-25SF-MH1-1	SX10- 50R-38SF-MH1-1	30.48 (1.200)	34.48 (1.357)	35.68 (1.405)	40.64 (1.600)	45.44 (1.789)
60	SX10- 60R-25SF-MH1-1	SX10- 60R-38SF-MH1-1	36.83 (1.450)	41.03 (1.615)	42.03 (1.655)	46.99 (1.850)	51.79 (2.039)
70	SX10- 70R-25SF-MH1-1	SX10- 70R-38SF-MH1-1	43.18 (1.700)	47.18 (1.857)	48.38 (1.905)	53.34 (2.100)	58.14 (2.289)
80	SX10- 80R-25SF-MH1-1	SX10- 80R-38SF-MH1-1	49.53 (1.950)	53.53 (2.107)	54.73 (2.155)	59.69 (2.350)	64.49 (2.539)
100	SX10-100R-25SF-MH1-1	SX10-100R-38SF-MH1-1	62.23 (2.450)	66.23 (2.607)	67.43 (2.655)	72.39 (2.850)	77.19 (3.039)

### PLUG SX 20

### PCB Layout (Ref.)



No. of Contacts	Part Number	A	B ±0.15 (.006)	E	F ±0.3 (.012)	G ±0.15 (.006)
20	SX20- 20P-25SF-MH1-1	11.43 (.450)	14.23 (.560)	21.59 (.850)	26.39 (1.039)	16.33 (.643)
30	SX20- 30P-25SF-MH1-1	17.78 (.700)	20.58 (.810)	27.94 (1.100)	32.74 (1.289)	22.68 (.893)
40	SX20- 40P-25SF-MH1-1	24.13 (.950)	25.93 (1.021)	34.29 (1.350)	39.09 (1.539)	29.03 (1.143)
50	SX20- 50P-25SF-MH1-1	30.48 (1.200)	32.28 (1.271)	40.64 (1.600)	45.44 (1.789)	35.38 (1.393)
60	SX20- 60P-25SF-MH1-1	36.83 (1.450)	39.63 (1.560)	46.99 (1.850)	51.79 (2.039)	41.73 (1.643)
70	SX20- 70P-25SF-MH1-1	43.18 (1.700)	44.98 (1.771)	53.34 (2.100)	58.14 (2.289)	48.08 (1.893)
80	SX20- 80P-25SF-MH1-1	49.53 (1.950)	51.33 (2.021)	59.69 (2.350)	64.49 (2.539)	54.43 (2.143)
100	SX20-100P-25SF-MH1-1	62.23 (2.450)	64.03 (2.521)	72.39 (2.850)	77.19 (3.039)	67.13 (2.643)

Dimensions in mm (inches).



Hong Kong  
Tel: 852-2723-7782  
Fax: 852-2723-9028

Japan  
03-3780-2715  
03-3780-2883

Singapore  
65-748-1332  
65-748-2920

Taiwan  
02-555-9711  
02-556-5424

United Kingdom  
1276-21717  
1276-66165

United States  
714-753-2600  
714-753-2699