

WORLDTRANS® POWER TRANSFORMERS



For PC Board, Solid-State Power, Control,
and Instrumentation Applications.



File #LR69222 File 810/89
File #LR69223 811/89
VDE 0551. 0806

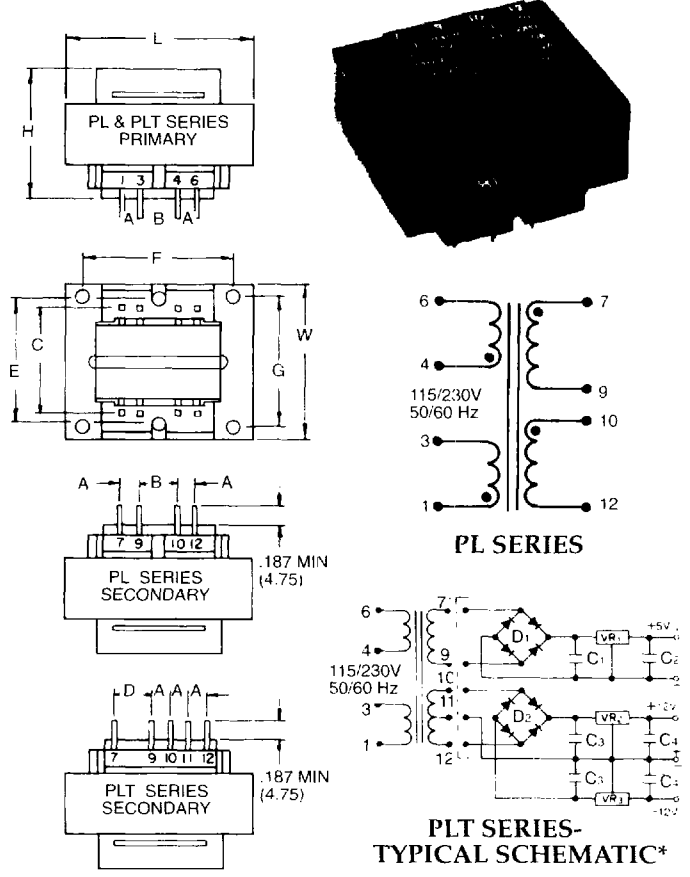
TUV File 810/89
811/89
IEC 380 EN60950

File
#E79781
UL506
File #138028
UL1411

- 115V/230V 50/60 Hz primary
- Meets US and International Safety Standards-UL, VDE, IEC, CSA
- 4,000 Volt RMS hi-pot Test-Dual Non-concentric Bobbins and Insulating Shroud Provide High Isolation and Reduced Capacitance
- 130°C Insulation System- Insulating Materials Meet UL 94V-0 Flammability Requirements
- Cost Effective Design

PL SERIES-FOR CONTROL AND POWER SUPPLY APPLICATIONS

Model	Primary	Secondary	CT	CT	CT
PL2.5-20	2.5	5.0	0.50	10.0 CT	0.25
PL5.0-10	5.0	5.0	1.00	10.0 CT	0.50
PL10-10	10.0	5.0	2.00	10.0 CT	1.00
PL20-10	20.0	5.0	4.00	10.0 CT	2.00
PL30-10	30.0	5.0	6.00	10.0 CT	3.00
PL56-10	56.0	5.0	11.20	10.0 CT	5.60
PL2.5-12	2.5	6.3	0.40	12.6 CT	0.20
PL5.0-12	5.0	6.3	0.80	12.6 CT	0.40
PL10-12	10.0	6.3	1.60	12.6 CT	0.80
PL20-12	20.0	6.3	3.20	12.6 CT	1.60
PL30-12	30.0	6.3	4.80	12.6 CT	2.40
PL56-12	56.0	6.3	8.80	12.6 CT	4.40
PL2.5-16	2.5	8.0	0.30	16.0 CT	0.15
PL5.0-16	5.0	8.0	0.62	16.0 CT	0.31
PL10-16	10.0	8.0	1.25	16.0 CT	0.62
PL20-16	20.0	8.0	2.50	16.0 CT	1.25
PL30-16	30.0	8.0	3.80	16.0 CT	1.90
PL56-16	56.0	8.0	7.00	16.0 CT	3.50
PL2.5-20	2.5	10.0	0.24	20.0 CT	0.12
PL5.0-20	5.0	10.0	0.50	20.0 CT	0.25
PL10-20	10.0	10.0	1.00	20.0 CT	0.50
PL20-20	20.0	10.0	2.00	20.0 CT	1.00
PL30-20	30.0	10.0	3.00	20.0 CT	1.50
PL56-20	56.0	10.0	5.60	20.0 CT	2.80
PL2.5-24	2.5	12.0	0.20	24.0 CT	0.10
PL5.0-24	5.0	12.0	0.42	24.0 CT	0.21
PL10-24	10.0	12.0	0.84	24.0 CT	0.42
PL20-24	20.0	12.0	1.66	24.0 CT	0.83
PL30-24	30.0	12.0	2.50	24.0 CT	1.25
PL56-24	56.0	12.0	4.66	24.0 CT	2.33
PL2.5-28	2.5	14.0	0.18	28.0 CT	0.09
PL5.0-28	5.0	14.0	0.36	28.0 CT	0.18
PL10-28	10.0	14.0	0.72	28.0 CT	0.36
PL20-28	20.0	14.0	1.44	28.0 CT	0.72
PL30-28	30.0	14.0	2.12	28.0 CT	1.06
PL56-28	56.0	14.0	4.00	28.0 CT	2.00
PL2.5-36	2.5	18.0	0.14	36.0 CT	0.07
PL5.0-36	5.0	18.0	0.28	36.0 CT	0.14
PL10-36	10.0	18.0	0.56	36.0 CT	0.28
PL20-36	20.0	18.0	1.12	36.0 CT	0.56
PL30-36	30.0	18.0	1.64	36.0 CT	0.82
PL56-36	56.0	18.0	3.12	36.0 CT	1.56



DIMENSIONS INCHES (MM)

Primary	2.5	5.0	10.0	20.0	30.0	56.0	Secondary	2.5	5.0	10.0	20.0	30.0	56.0
1.625	1.313	1.125	.200	.250	1.000	—	1.063	—	—	—	—	—	—
(41.3)	(33.3)	(28.6)	(5.1)	(6.4)	(25.4)	—	(27.0)	—	—	—	—	—	—
1.625	1.313	1.375	.200	.400	1.000	—	1.063	—	—	—	—	—	—
(41.3)	(33.3)	(34.9)	(5.1)	(10.2)	(25.4)	—	(27.0)	—	—	—	—	—	—
1.875	1.563	1.375	.200	.400	1.140	—	1.250	—	—	—	—	—	—
(47.6)	(39.7)	(34.9)	(5.1)	(10.2)	(29.0)	—	(31.8)	—	—	—	—	—	—
2.250	1.875	1.625	.400	.400	1.460	40	1.500	—	—	—	—	—	—
(57.1)	(47.6)	(41.3)	(10.2)	(10.2)	(37.1)	(10.2)	(38.1)	—	—	—	—	—	—
2.625	2.188	1.563	.550	.275	1.680	.55	—	2.19	1.75	—	—	—	—
(66.7)	(55.6)	(39.7)	(14.0)	(7.0)	(42.7)	(14.0)	—	(55.6)	(44.5)	—	—	—	—
3.000	25.00	1.845	.600	.300	1.900	.60	—	2.50	2.00	—	—	—	—
(76.2)	(63.5)	(46.9)	(15.2)	(7.6)	(48.3)	(15.2)	—	(63.5)	(50.8)	—	—	—	—

† For PLT series secondary only, dimension A is 1/2 of value shown.
* Ratings based on 120V nominal input.

TRIPLE OUTPUT TRANSFORMERS FOR REGULATED & UNREGULATED POWER SUPPLIES

Model	Primary	Output 1	Output 2	Output 3	Output 4	Output 5	Output 6	Output 7	Output 8	Output 9	Output 10	Output 11	Output 12
PLT20-30	20.0	11.11V	33.0 CT	5.0	1.25	±12	150	7,500 µF	1,500 µF	LM-323K-5	LM-340K-12	LM-320K-12	3N253 3N247
PLT30-32	30.0	11.77V	34.0 CT	5.0	1.75	±12	210	10,000 µF	1,500 µF	LM-323K-5	LM-340K-12	LM-320K-12	3N253 3N247
PLT56-32	56.0	11.60V	33.5 CT	5.0	2.8	±12	350	15,000 µF	2,000 µF	LM-323K-5	LM-340K-12	LM-320K-12	MDA-400 3N247

C₂ and C₃ 10,000 µF @ 20V. All VR's are National Semiconductor P/N's. All diodes are Motorola P/N's.

TAMURA CORPORATION OF AMERICA

Postal Box 892230 • Temecula, CA 92589-2230 • 909/699-1270 • FAX: 909/676-9482