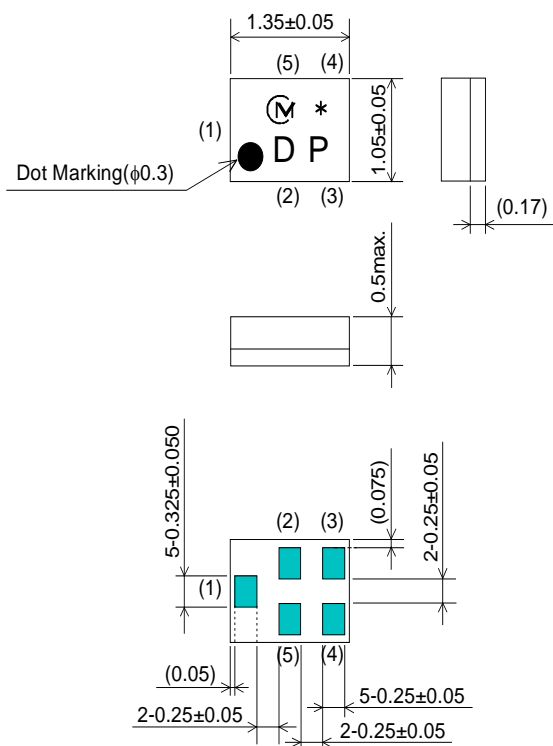


SAW FILTER FOR GSM900/Band8 Rx

Murata part number: SAFEA942MFR0F00

Package Dimensions



Marking
: Laser Printing

(1) : Unbalance Port
(3)(4) : Balance Port
Others : Ground

Unit : mm

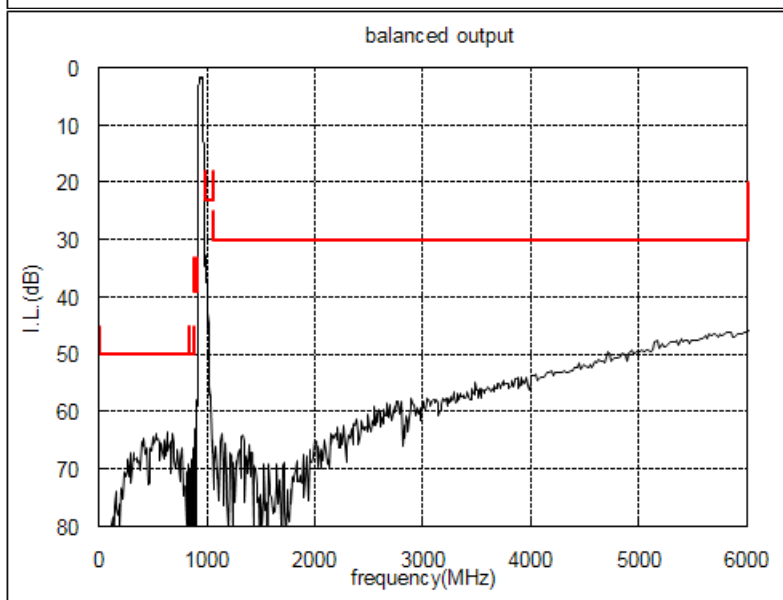
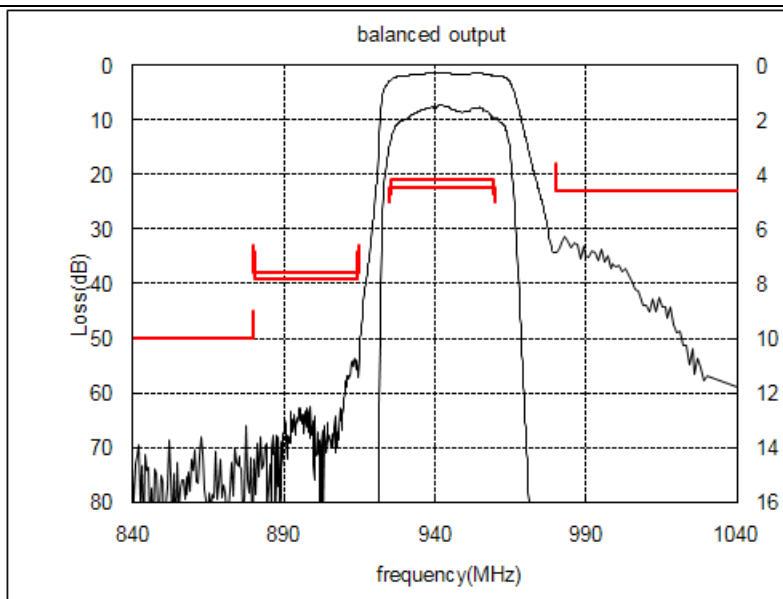
Specification

Item	Specification		
	-30 to 85°C	25±2°C	typ.
Nominal Center Frequency(fc)	942.5MHz		
Insertion Loss			
1) 925 to 960 MHz	4.5 dB min.	4.0 dB min.	2.7 dB
2) 925.48 to 959.52 MHz	4.2 dB min.	3.8 dB min.	2.5 dB
Absolute Attenuation			
1) 0.1 to 835 MHz	50 dB min.	50 dB min.	61 dB
2) 835 to 880 MHz	50 dB min.	50 dB min.	60 dB
3) 880 to 915 MHz	38 dB min.	42 dB min.	49 dB
4) 880.48 to 914.52 MHz	39 dB min.	43 dB min.	51 dB
5) 980 to 1060 MHz	23 dB min.	23 dB min.	31 dB
6) 1060 to 6000 MHz	30 dB min.	30 dB min.	47 dB
7) 6000 to 12750 MHz	25 dB min.	25 dB min.	34 dB
Ripple Deviation (925 to 960 MHz)	3.0dB max.	3.0dB max.	1.2 dB
VSWR (925 to 960 MHz)	2.0 max.	2.0 max.	1.6
Amplitude Balance (925 to 960 MHz)	±1.0dB max.	±1.0dB max.	+0.2 dB
Phase Balance (925 to 960 MHz)	180±5deg. max.	180±5deg. max.	180+1.2 deg.
Balance Port Matching Impedance (nominal)	100Ω//56nH		
Unbalance Port Matching Impedance (nominal)	50Ω		
Input Signal Level	31.6mW (+15dBm), 5000 hours (at 50°C)		

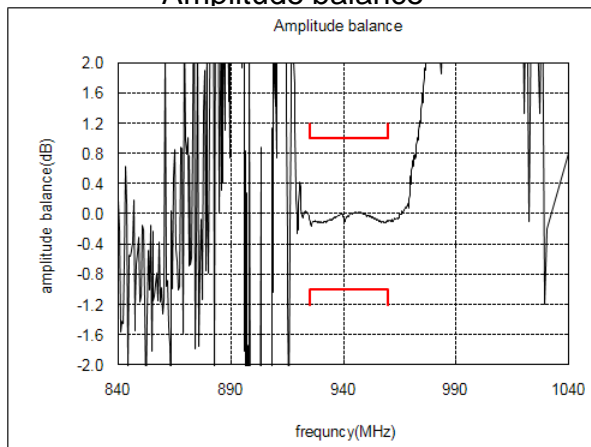
SAW FILTER FOR GSM900/Band8 Rx

Murata part number: SAFEA942MFR0F00

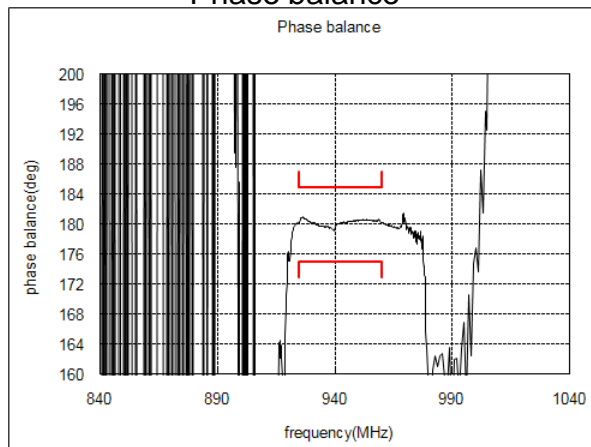
Frequency Performance



Amplitude balance



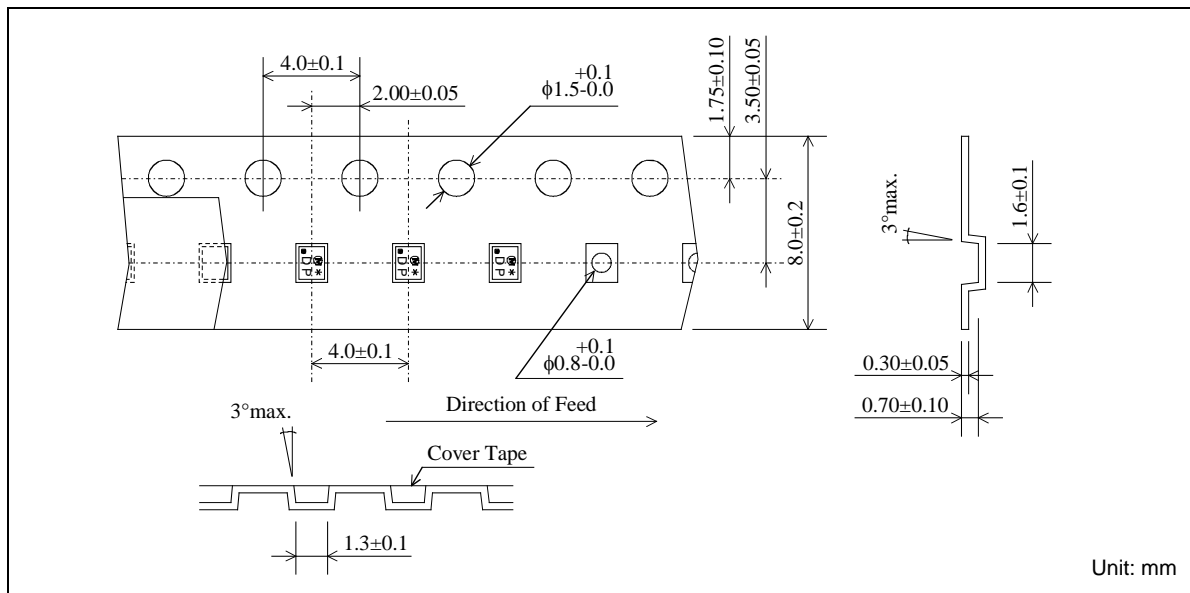
Phase balance



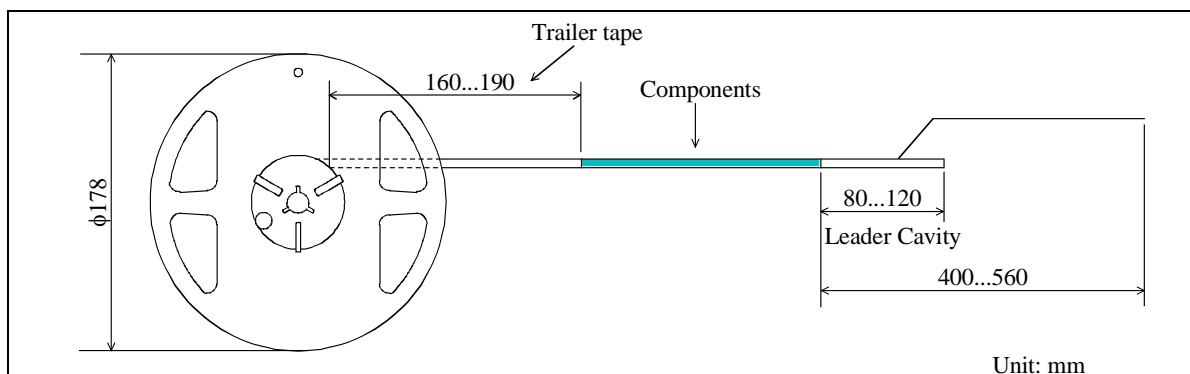
SAW FILTER FOR GSM900/Band8 Rx

Murata part number: SAFEA942MFR0F00

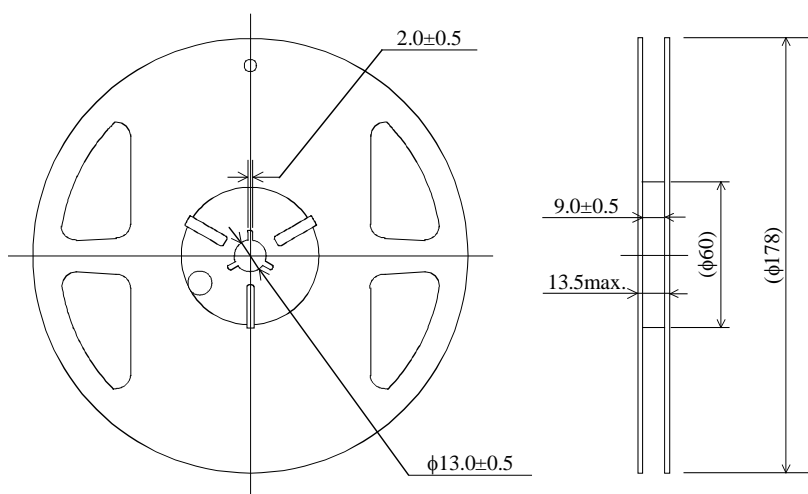
Dimensions of Carrier Tape



Dimensions of Tape



Dimensions of Reel

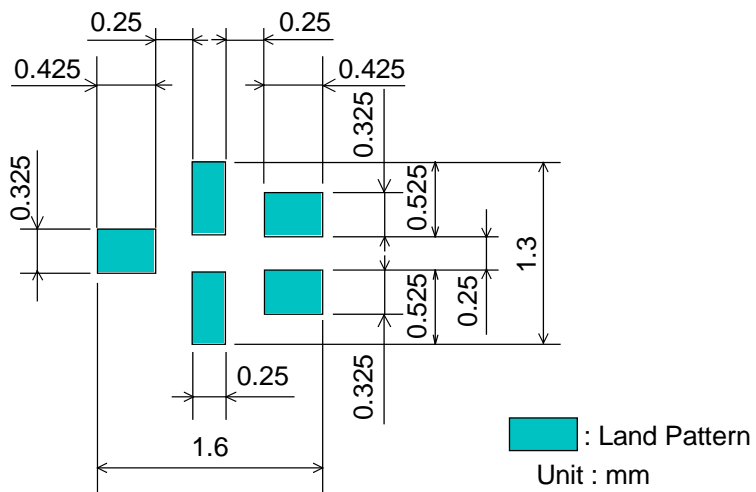


SAFEA942MFR0F00R14 ... 4000pcs/reel
SAFEA942MFR0F00R12 ... 2000pcs/reel

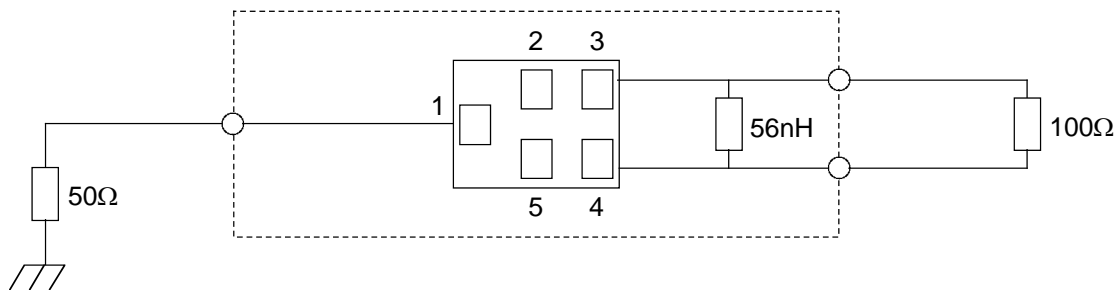
SAW FILTER FOR GSM900/Band8 Rx

Murata part number: SAFEA942MFR0F00

Recommended Land Pattern



Test Circuit



SAW FILTER FOR GSM900/Band8 Rx

Murata part number: SAFEA942MFR0F00

■ RoHS Compliance

This component is compliant with RoHS directive.

This component was always RoHS compliant from the first date of manufacture.

• Caution - Limitation of Applications

Please contact us before using our products for the applications listed below which require especially for the prevention of defects which might directly cause damage to the third party's life, body or property.

- a. Aircraft equipment
- b. Aerospace equipment
- c. Undersea equipment
- d. Nuclear control equipment
- e. Medical equipment
- f. Transportation equipment (vehicles, trains, ships, etc.)
- g. Traffic signal equipment
- h. Disaster prevention / crime prevention equipment
- i. Data - processing equipment
- j. Application of similar complexity and / or reliability requirements to the applications listed in the above

- This PDF Datasheet is downloaded from the website of Murata Manufacturing Co., Ltd. Therefore, it's specifications are subject to change or our products in it may be discontinued without advance notice. Please check with our sales representatives or product engineers before ordering.

- This PDF Datasheet has only typical specifications because there is no space for detailed specifications. Therefore, please approve our product specifications or transact the approval sheet for product specifications before ordering.