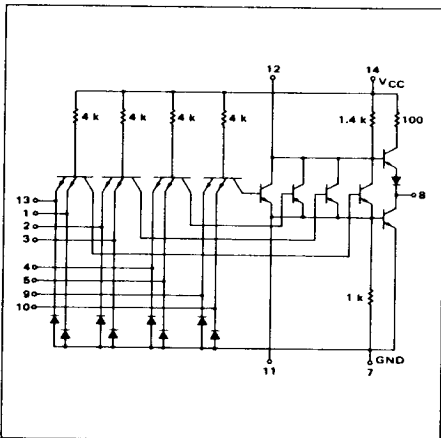


4-15

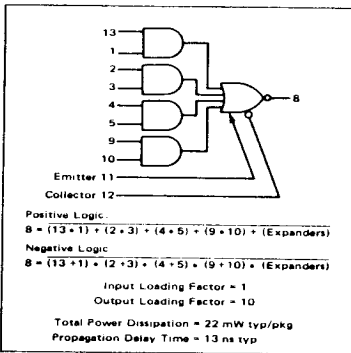
EXPANDABLE 4-WIDE 2-INPUT  
"AND-OR-INVERT" GATE

MTTL MC7400P series  
MTTL MC5400L/7400L series

MC5453L\*  
MC7453P,L\*



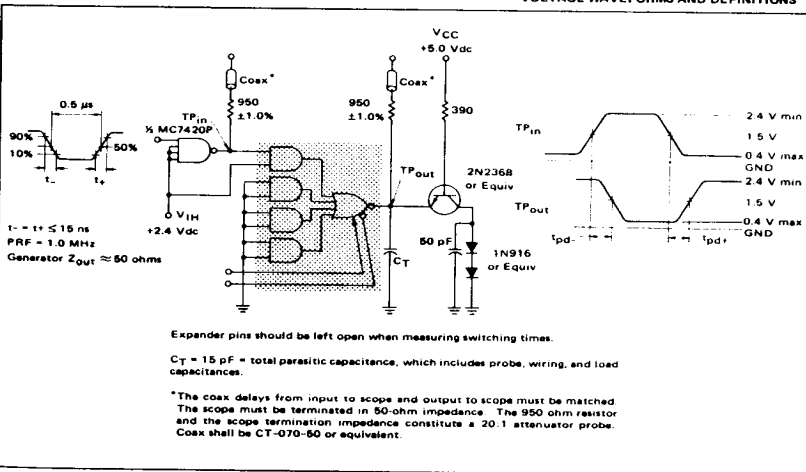
This device consists of four 2-input AND gates ORed together and inverted. Up to four MC5460/7460 expander gates may be ORed with the device at the expander points.



\*L suffix = TO-118 ceramic package (Case 632)  
 P suffix = TO-118 plastic package (Case 605)  
 See General Information section for package outline dimensions.

SWITCHING TIME TEST CIRCUIT

VOLTAGE WAVEFORMS AND DEFINITIONS



388

388

FIGURE 1 -  $I_{EX}$  TEST CIRCUIT

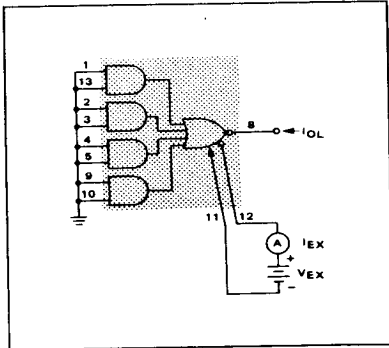


FIGURE 2 -  $V_{BE}$  TEST CIRCUIT

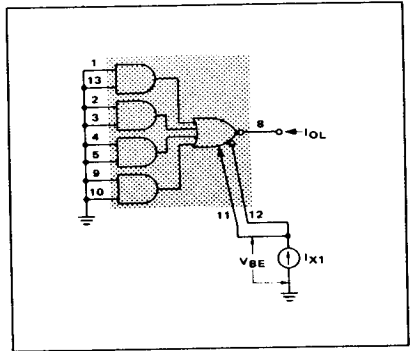


FIGURE 3 -  $V_{OL}$  TEST CIRCUIT

