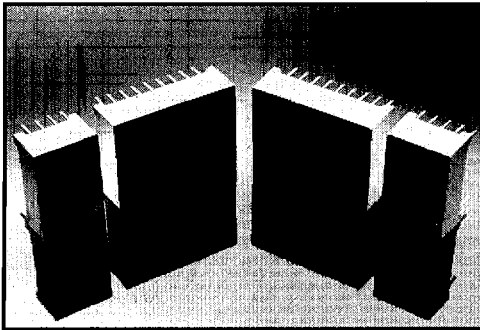


ORANGE MAN6600 SERIES



FEATURES

- High performance nitrogen-doped GaAsP on GaP
- Large, easy to read, digits
- Common anode or common cathode models
- Fast switching — excellent for multiplexing
- Low power consumption
- Bold solid segments that are highly legible
- Solid state reliability — long operation life
- Rugged plastic construction
- Directly compatible with integrated circuits
- High brightness with high contrast
- Categorized for Luminous Intensity (See Note 6)
- Wide viewing angle...150°
- Low forward voltage
- Two-digit package simplifies alignment and assembly

DESCRIPTION

The MAN6600 Series is a family of large digits which includes double and single digits. The series features the sculptured font which minimizes "gappiness" at the segment intersections. Available models include two-digit, one and one-half digits with polarity sign, single digits, and single polarity/overflow digits. All models have right hand decimal points and are available in common anode or common cathode configuration. Units are constructed with Orange face and segment color.

APPLICATIONS

- For industrial and consumer applications such as:
- Digital readout displays
 - Instrument panels
 - Point of sale equipment
 - Digital clocks
 - TV and radios

MODEL NUMBERS

PART NUMBER	COLOR	DESCRIPTION	PACKAGE DRAWING	PIN OUT SPECIFICATION
MAN6610	Orange	2 Digit; Common Anode; Rt. Hand Decimal	A	A
MAN6630	Orange	1½ Digit; Common Anode; Overflow ±1.8; Rt. Hand Decimal	B	B
MAN6640	Orange	2 Digit; Common Cathode; Rt. Hand Decimal	A	C
MAN6650	Orange	1½ Digit; Common Cathode; Overflow ±1.8; Rt. Hand Decimal	B	D
MAN6660	Orange	Single Digit; Common Anode; Rt. Hand Decimal	C	E
MAN6675	Orange	Single Digit; Common Anode; Overflow ±1.0; Rt. Hand Decimal	D	G
MAN6680	Orange	Single Digit; Common Cathode; Rt. Hand Decimal	C	F
MAN6695	Orange	Single Digit; Common Cathode; Overflow ±1.0; Rt. Hand Decimal	D	H

RECOMMENDED OPTICAL FILTERS

For optimum ON and OFF contrast, one of the following filters or equivalents should be used over the display:

DEVICE TYPE	FILTER
MAN6600 Series	Panelgraphic Scarlet 65 Homalite 100-1670

ELECTRO-OPTICAL CHARACTERISTICS

(Per Diode at 25°C Free Air Temperature Unless Otherwise Specified)

	MIN.	TYP.	MAX.	UNITS	TEST CONDITIONS
Luminous Intensity, digit average (See Note 1)	510	2200		μcd	I _F = 10 mA
Peak emission wavelength		630		nm	
Spectral line half width		40		nm	
Forward voltage					
Segment			2.5	V	I _F = 20 mA
Decimal point			2.5	V	I _F = 20 mA
Dynamic resistance					
Segment		26		Ω	I _F = 20 mA
Decimal point		26		Ω	I _F = 20 mA
Capacitance					
Segment		35		pF	V = 0
Decimal point		35		pF	V = 0
Reverse current					
Segment			100	μA	V _R = 3.0 V
Decimal point			100	μA	V _R = 3.0 V
Ratio I _L			2:1	—	I _F = 10 mA

ABSOLUTE MAXIMUM RATINGS

	MAN6610 MAN6640	MAN6630 MAN6650	MAN6660 MAN6680	MAN6675 MAN6695
Power dissipation at 25°C ambient	1200 mW	1050 mW	600 mW	375 mW
Derate linearly from 50°C	-17 mW/°C	-15.0 mW/°C	-8.6 mW/°C	-5.4 mW/°C
Storage and operating temperature	-40°C to +85°C	-40°C to +85°C	-40°C to +85°C	-40°C to +85°C
Continuous forward current				
Total	480 mA	420 mA	240 mA	150 mA
Per segment	30 mA	30 mA	30 mA	30 mA
Decimal point	30 mA	30 mA	30 mA	30 mA
Reverse voltage				
Per segment	6.0 V	6.0 V	6.0 V	6.0 V
Decimal point	6.0 V	6.0 V	6.0 V	6.0 V
Soldering time at 260°C (See Notes 3 and 4)	5 sec.	5 sec.	5 sec.	5 sec.

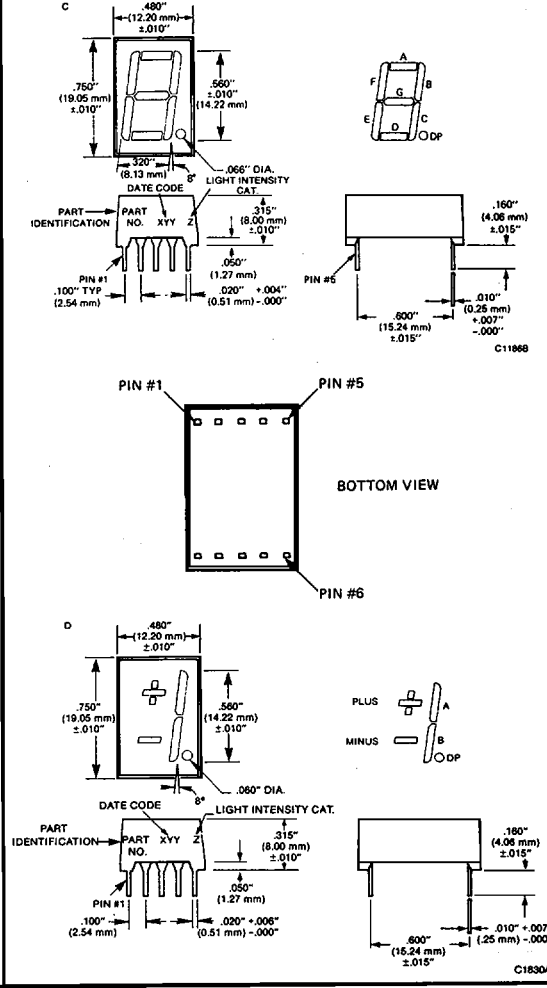
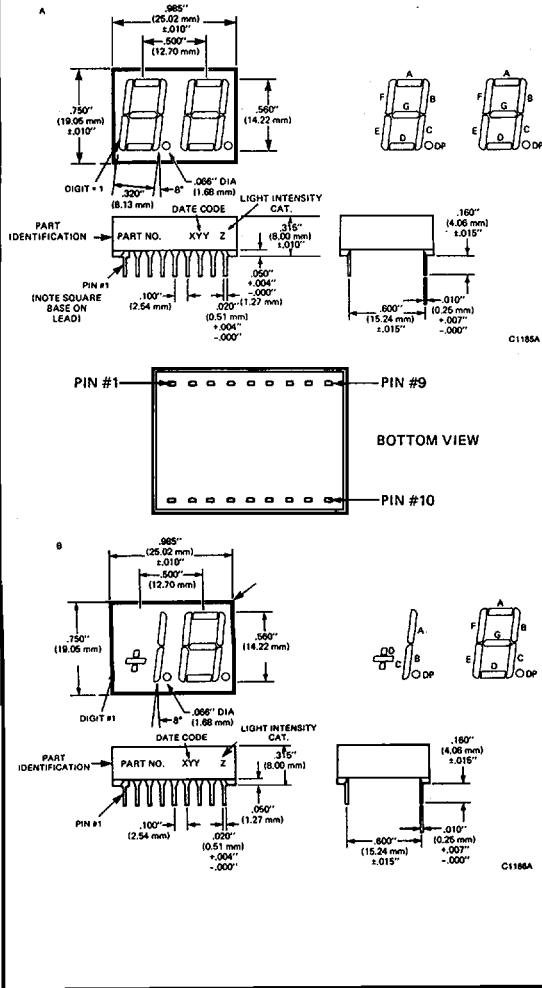
TYPICAL THERMAL CHARACTERISTICS

Thermal resistance junction to free air Φ_{JA}	160°C/W
Wavelength temperature coefficient (case temperature)	1.0Å/°C
Forward voltage temperature coefficient	-2.0 mV/°C

NOTES

- The digit average Luminous Intensity is obtained by summing the Luminous Intensity of each segment and dividing by the total number of segments as measured with a Photo Research Corp. "SPECTRA" Microcandela Meter (Model IV-D). Intensity will not vary more than ±33.3% between all segments within a digit.
- The curve in Figure 3 is normalized to the brightness at 25°C to indicate the relative efficiency over the operating temperature range.
- Leads of the device immersed to 1/16 inch from the body. Maximum device surface temperature is 140°C.
- For flux removal, Freon TF, Freon TE, Isoproponal or water may be used up to their boiling points.
- All displays are categorized for Luminous Intensity. The Intensity category is marked on each part as a suffix letter to the part number.

PACKAGE DIMENSIONS



3

MAN6600 SERIES

ELECTRICAL CONNECTIONS

Pin No.	ELECTRICAL CONNECTIONS							
	A MAN6610	B MAN6630	C MAN6640	D MAN6650	E MAN6660	F MAN6680	G MAN6675	H MAN6695
1	E Cath. (#1)	C Cath. (#1)	E An. (#1)	C An. (#1)	E Cath.	E An.	Minus Cath.	Minus An.
2	D Cath. (#1)	D Cath. (#1)	D An. (#1)	D An. (#1)	D Cath.	D An.	Com. An. \pm	Com. Cath. \pm
3	C Cath. (#1)	B Cath. (#1)	C An. (#1)	B An. (#1)	Com. An.	Com. Cath.	Seg. B Cath.	Seg. B An.
4	DP Cath. (#1)	DP Cath. (#1)	DP An. (#1)	DP An. (#1)	C Cath.	C An.	Com. An.	Com. Cath.
5	E Cath. (#2)	E Cath. (#2)	E An. (#2)	E An. (#2)	DP Cath.	DP An.	A, B, DP	A, B, DP
6	D Cath. (#2)	D Cath. (#2)	D An. (#2)	D An. (#2)	B Cath.	B An.	DP Cath.	DP An.
7	G Cath. (#2)	G Cath. (#2)	G An. (#2)	G An. (#2)	A Cath.	A An.	Seg. A Cath.	Seg. A An.
8	C Cath. (#2)	C Cath. (#2)	C An. (#2)	C An. (#2)	Com. An.	Com. Cath.	Com. An. \pm	Com. Cath. \pm
9	DP Cath. (#2)	DP Cath. (#2)	DP An. (#2)	DP An. (#2)	F Cath.	F An.	Plus Cath.	Plus An.
10	B Cath. (#2)	B Cath. (#2)	B An. (#2)	B An. (#2)	G Cath.	G An.	N.C.	N.C.
11	A Cath. (#2)	A Cath. (#2)	A An. (#2)	A An. (#2)				
12	F Cath. (#2)	F Cath. (#2)	F An. (#2)	F An. (#2)				
13	Digit #2 An.	Digit #2 An.	Digit #2 Cath.	Digit #2 Cath.				
14	Digit #1 An.	Digit #1 An.	Digit #1 Cath.	Digit #1 Cath.				
15	B Cath. (#1)	A Cath. (#1)	B An. (#1)	A An. (#1)				
16	A Cath. (#1)	N.C.	A An. (#1)	N.C.				
17	G Cath. (#1)	N.C.	G An. (#1)	N.C.				
18	F Cath. (#1)	N.C.	F An. (#1)	N.C.				

TYPICAL CHARACTERISTIC CURVES

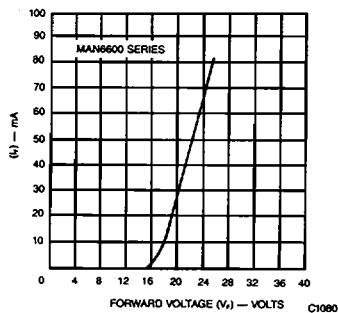


Fig. 1. Forward Current vs. Forward Voltage

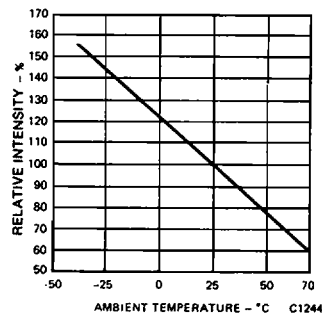


Fig. 2. Relative Luminous Intensity vs. Temperature (see Note 2)

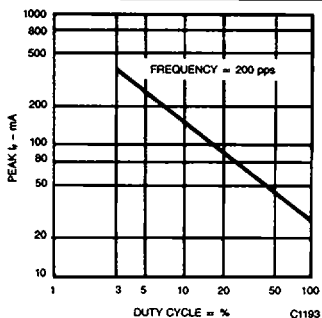


Fig. 3. Max Peak Current vs. Duty Cycle

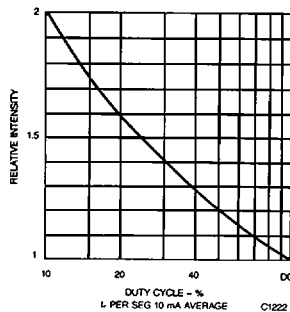


Fig. 4. Luminous Intensity vs. Duty Cycle

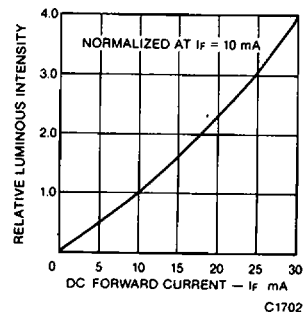
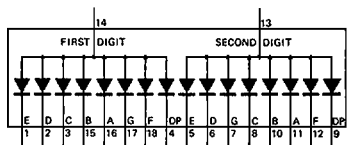
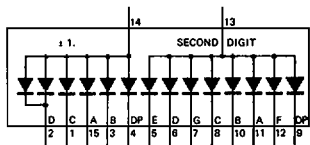


Fig. 5. Relative Luminous Intensity vs. Forward Current

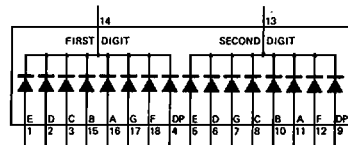
INTERNAL CONNECTIONS



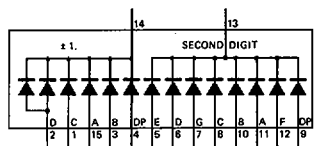
MAN6610 C1195



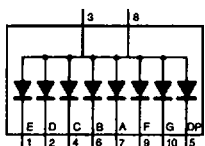
MAN6630 C1196



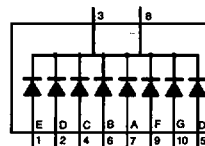
MAN6640 C1197



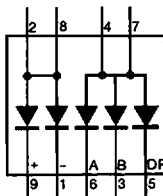
MAN6660 C1198



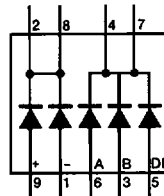
MAN6660 C1238



MAN6680 C1239



MAN6675 C1828



MAN6695 C1829

3

MAN6600 SERIES

