



# ELD Screw Terminal Edgcard Connector

.200"

The .200" spacing Electrocon ELD features selectively gold-plated cantilever beam contacts and a vise clamp wire termination design.

## Superior Connection

Key to the superior performance of the Electrocon ELD/200 is the unique cantilever beam contact that eliminates the board damage possible with the stamped tuning fork contacts traditionally used in such connectors. The dual cantilever beam contact also assures improved performance under board warping and bending conditions.

## MATERIALS:

**Contact:** Phosphor bronze

**Plating:** .000030" selective gold over nickel (standard); alternates available

**Hardware:** #4-40 steel screw, nickel plated

**Housing:** Black polyester UL94-V0

## SPECIFICATIONS:

**Maximum Operating Temperature:** 105° C

**Dielectric Withstanding:** 3000 V

**Current Rating:** 10 A


**Operating Voltage:** 300 V


**Insulation Resistance:** 10<sup>11</sup> ohms

**Wire Range:** AWG #12 stranded, #14-26 solid and stranded.

**Wire Pullout Force:** Meets UL 486

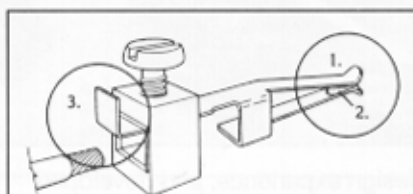
## APPROVALS:

 UL recognized under File No. E83421

 Canadian Standards Association recognized under File No. LR69703-2

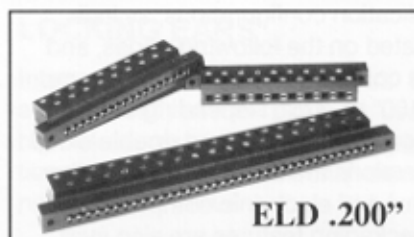
Consistent, reliable connections are provided even after repeated insertion and withdrawal cycles, and over the full .054" to .071" board thickness range.

Standard PCD plating is .000030" gold over a nickel underplate on phosphor bronze contacts.

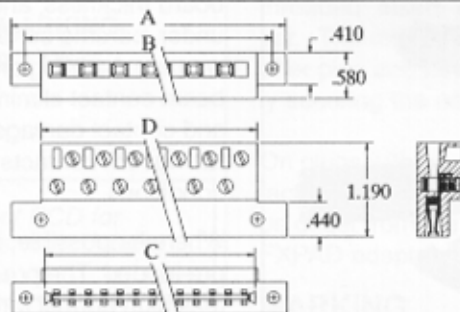


1. Dual Cantilever Beam Contact
2. Selective .000030" Gold Plating at the board contact point.
3. Floating Vise Clamp

- .200" SPACING
- 6 TO 36 CONTACTS
- CANTILEVER BEAM CONTACTS
- VISE CLAMP WIRE TERMINATION



## ELD .200" Spacing



POS	CATALOG #	A	B	C	D
6	ELD061100	2.15	1.80	1.12	1.40
8	ELD081100	2.55	2.20	1.52	1.80
10	ELD101100	2.95	2.60	1.92	2.20
12	ELD121100	3.35	3.00	2.32	2.60
15	ELD151100	3.95	3.60	2.92	3.00
16	ELD161100	4.15	3.80	3.12	3.60
18	ELD181100	4.55	4.20	3.52	3.80
20	ELD201100	4.95	4.60	3.92	4.20
22	ELD221100	5.35	5.00	4.32	4.60
24	ELD241100	5.75	5.40	4.72	5.00
30	ELD301100	6.95	6.60	5.92	5.40
32	ELD321100	7.35	7.00	6.32	6.60
34	ELD341100	7.75	7.40	6.72	7.00
36	ELD361100	8.15	7.80	7.12	7.40