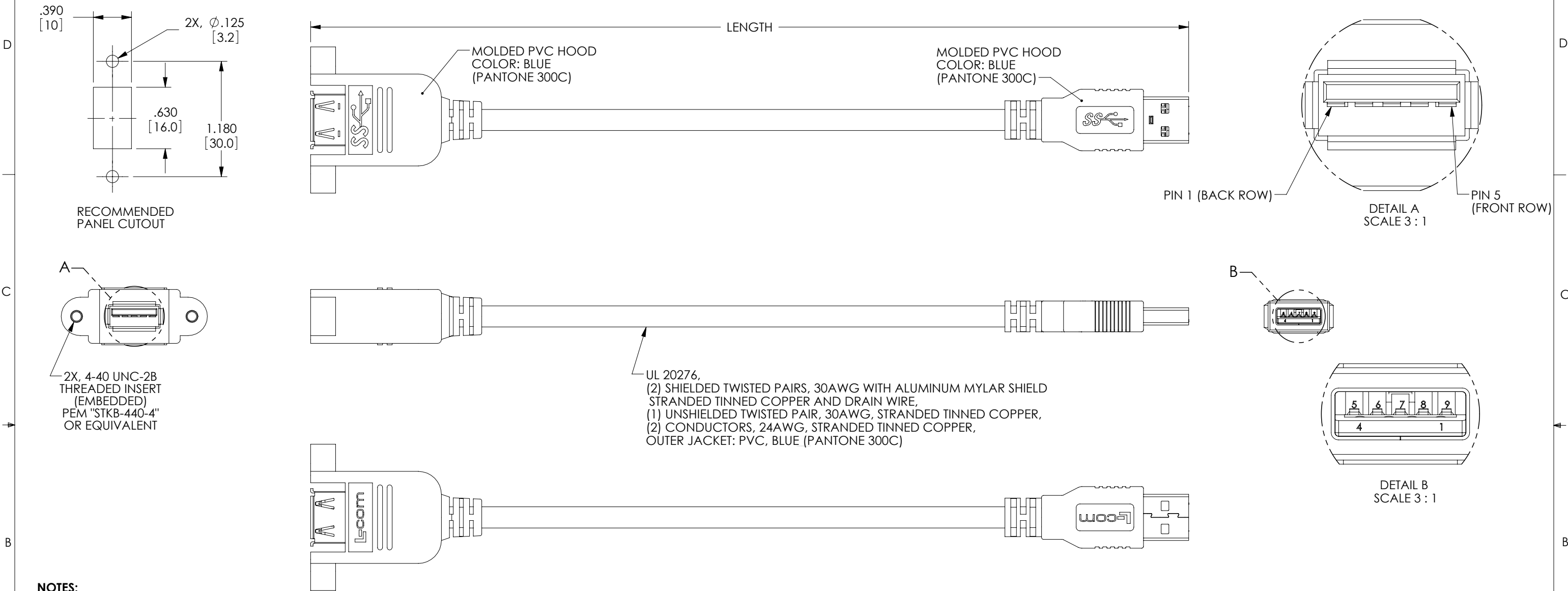


THE INFORMATION CONTAINED IN THIS DRAWING IS THE SOLE PROPERTY OF L-COM, INC. ANY REPRODUCTIONS IN PART OR WHOLE WITHOUT THE WRITTEN PERMISSION OF L-COM, INC. IS PROHIBITED.

REVISIONS			
REV	DESCRIPTION	DATE	CHANGED BY
A	INITIAL RELEASE	2/8/12	D.GRIFFIN
B	ECN5976: CORRECTED JACK ORIENTATION	02/15/12	DFP



NOTES:

MATERIAL:
TYPE "A" JACK:

PANEL MOUNT HOUSING: PVC
CONNECTOR PLASTIC: (BLUE) PBT WITH GLASS FIBER
CONNECTOR CONTACTS: BRASS
CONNECTOR SHELL: SUS

TYPE "A" PLUG:

CONNECTOR SHELL: SPCC
CONNECTOR PLASTIC: (BLUE) PBT WITH GLASS FIBER,UL94V-0
CONNECTOR CONTACTS: PHOSPHOR BRONZE

FINISH:

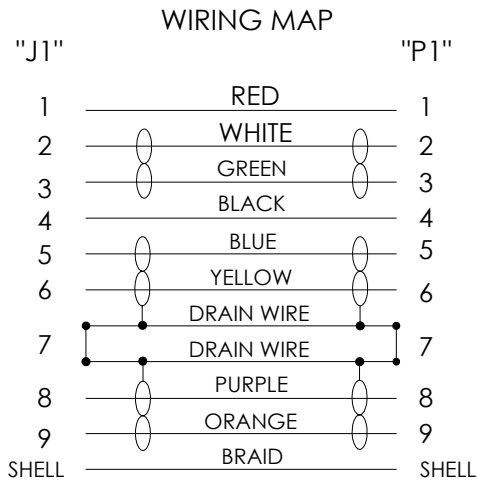
CONNECTOR CONTACTS: GOLD, 30μINCHES
CONNECTOR SHELL: NICKEL

ENVIRONMENTAL:

OPERATING TEMPERATURE: -20°C TO +80°C



MISCELLANEOUS:

CABLE ASSEMBLY SHALL BE TESTED FOR CONTINUITY.
CABLE ASSEMBLY SHALL BE INDIVIDUALLY PACKAGED IN
ACCORDANCE WITH L-COM SPEC. PS-0031



PART NUMBER	LENGTH	
	METERS	FEET
UPMAA-30-03M	0.3	0.98
UPMAA-30-05M	0.5	1.64
UPMAA-30-1M	1.0	3.28
UPMAA-30-2M	2.0	6.56
UPMAA-30-3M	3.0	9.84

RoHS Compliant ✓

UNLESS OTHERWISE SPECIFIED, DIMENSIONS ARE IN INCHES [mm]		APPROVALS		DATE		 NORTH ANDOVER, MA 01845	
OVERALL CABLE LENGTH TOLERANCE: $\begin{matrix} \leq 12 [305] & \leq +1 [25] / -0 \\ >12 [305] & \leq 60 [1524] = +2 [51] / -0 \\ >60 [1524] & \leq 120 [3048] = +4 [102] / -0 \\ >120 [3048] & \leq 300 [7620] = +6 [152] / -0 \\ >300 [7620] & = +5% / -0\% \end{matrix}$		DRAWN BY D. PARHAM CHECKED BY D. CASTRO APPROVED BY S. SMITH		09/22/2011 09/22/2011 09/27/2011		CATEGORY USB 3.0	
ALL OTHER DIMENSIONAL TOLERANCES: $\begin{matrix} .X = \pm .2 \\ .XX = \pm .02 \\ .XXX = \pm .005 \end{matrix}$		CONFIGURATION DETAILS OF UNDIMENSIONED FEATURES MAY VARY		PRODUCT DESCRIPTION CA USB 3.0 A PNL/AM			
PROJECTION 		COLOR VARIATIONS MAY OCCUR		SIZE B	FSCM NO. 43321	DWG. NO. UPMAA-30	REV. B
				SCALE: 1:1 CAD FILE: UPMAA-30.SLDDRW		SHEET 1 OF 1	