

**RoHS Compliant
Lead (Pb) Free**

Ltr	Revisions	Date	Appr

Electrical Specifications:

Frequency Range		0.252 to 150.000		MHz
Temperature Stability		±100		PPM Max
		±50		
		±30		
		±20		
		±15		
Aging per Year		±5		
Operating Temperature Range	Standard	-10 to +70		°C
	Extended	-40 to +85		
Storage Temperature Range		-55 to +125		
Supply Voltage		+3.3 ± 10%	+5.0 ± 10%	Vdd
Input Current	0.252 to 24.000	5	10	mA Max
	24.100 to 50.000	10	15	
	50.100 to 70.000	25	50	
	70.100 to 80.000	25	50	
	80.100 to 150.000	60	60	
Output Voltage	Logic High (Voh)	90%		Vdd Min
	Logic Low (Vol)	10%		Vdd Max
Output Symmetry (Duty Cycle)	Standard	40 to 60		%
	Tight	45 to 55		
Output Load		1-10		TTL
Rise and Fall Time	0.252 to 24.000	10	10	ns Max
	24.100 to 50.000	6	6	
	50.100 to 70.000	6	6	
	70.100 to 80.000	4	4	
	80.100 to 150.000	4	4	
Start Up Time		10		ms Max

Temperature stability is Inclusive of all conditions:

Calibration Tolerance at +25°C, frequency stability over the operating temperature range, supply voltage, supply voltage change, output load changes, shock, vibration, and 1st year aging at +25°C.



11-3 Chien-Kuo Rd T.E.P.Z. 4027 Taiwan, ROC

All dimensions are millimeters.

CAD: TCR

Review: EG

Appr: JL

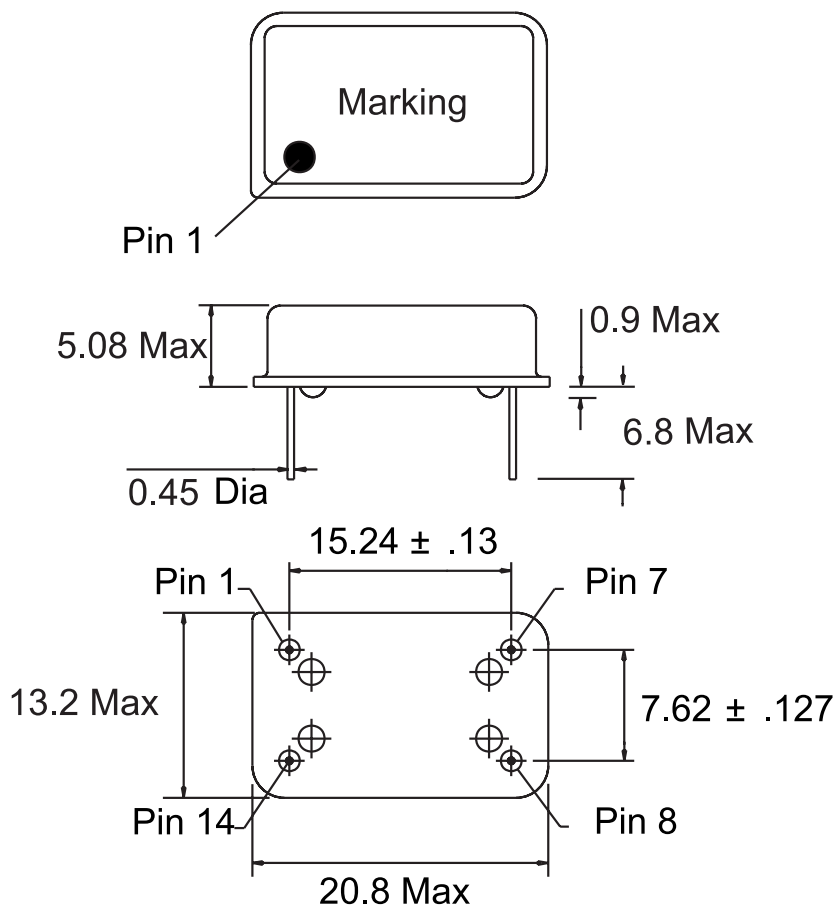
Page: 1/4 Date: April 28, 2006

Specification Title:

**Clock Oscillator
14 pin DIP-Full Size Metal Package
TTL Compatible
General Product Specification**

Part Number: SFT Series

Mechanical Outline:

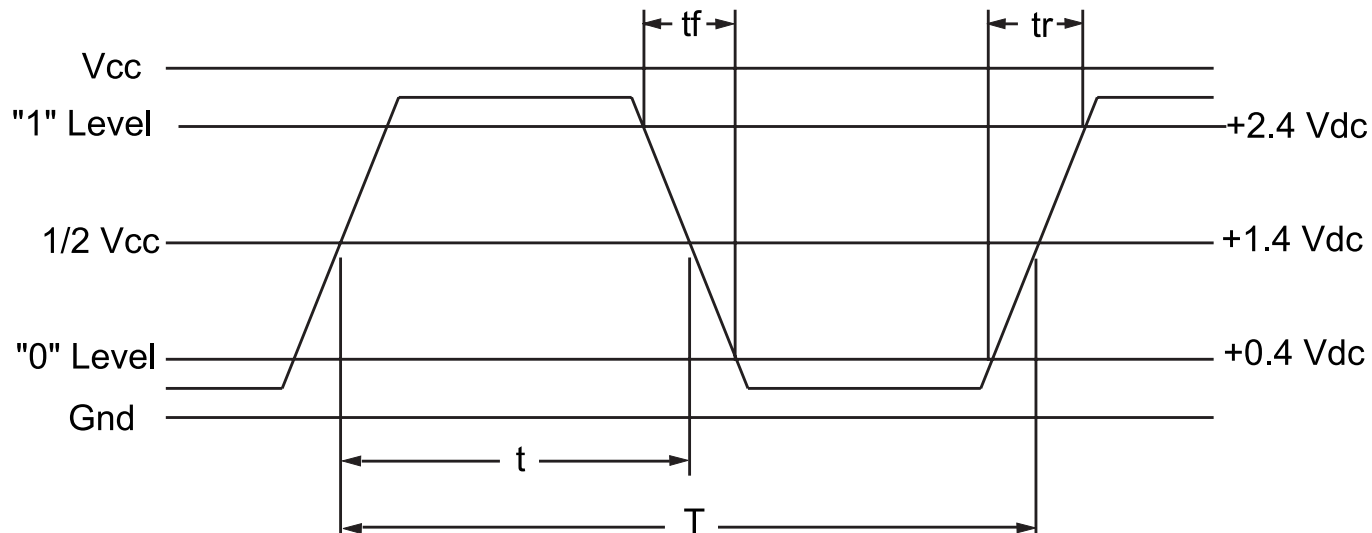


14 pin DIP Resistance Weld Metal Package.
Dimensions are millimeters.

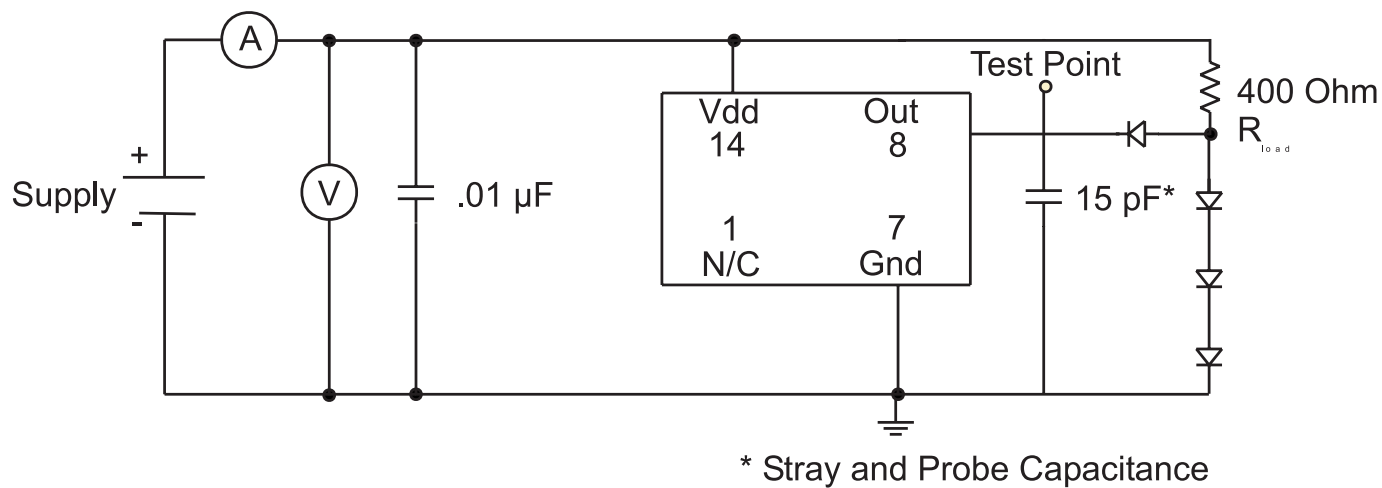
Pin Connection:

Pin	Connection
1	NC
7	Ground
8	Output
14	+Vdd

TTL Output Waveform:



TTL Test Circuit:



How to build a Part Number:

Series	S	Parameter
Package	F	14 Pin DIP-Full Size
	T	TTL Compatible
Supply Voltage	50	+5.0 Vdd ± 10%
	33	+3.3 Vdd ± 10%
Temperature Stability	10	±100 PPM
	05	±50 PPM
	03	±30 PPM
	02	±20 PPM
	015	±15 PPM
Duty Cycle	See Notes	±10%
	T	±5%
Frequency	0.252 to 150.000	MHz
Temperature Range	See Notes	-10 to +70 °C
	X	-40 to +85 °C

Part Number Example:

SFT3305T-52.00-X

SFT: 14 pin DIP Full Size

33: +3.3 Vdc Supply Voltage

05: ±50 PPM Temperature Stability

52.000 MHz Nominal Frequency

X: -40 to + 85° C Extended Temperature Range

Notes:

- 1- Standard Duty Cycle and Temperature Range do not need to be included in Part Number description.
- 2- Product is shipped in ESD Plastic Tubes. 25 pieces per tube.
- 3- Specification subject to change without notice.