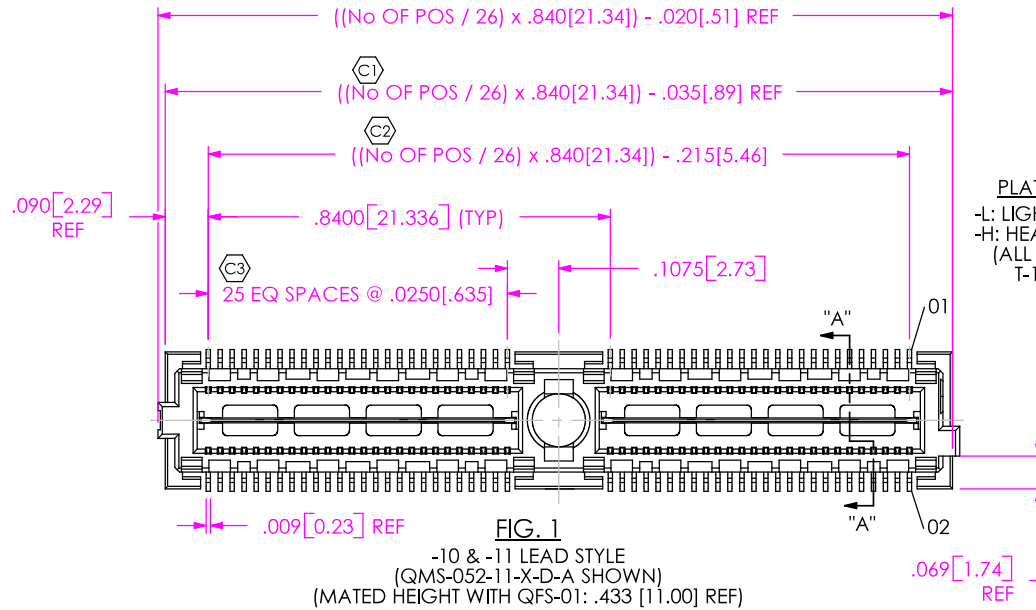


DO NOT SCALE FROM THIS PRINT

QMS-XXX-XX-X-D-X-XXX



No OF POSITIONS

-026, -052, -078, -104, *-130 (PER ROW)

LEAD STYLE

-10 (SEE FIG. 1)
-11 (SEE FIG. 1)
*-16 (SEE FIG. 4, SHEET 3)
*-25 (SEE FIG. 4, SHEET 3)

PLATING SPECIFICATION

-L: LIGHT GOLD (USE T-1M19-XX-L)
-H: HEAVY GOLD (USE T-1M19-XX-H)
(ALL PLATING STYLES USE T-1G19-XX-L)

ROW SPECIFICATION

-D: DOUBLE

OPTION

-A: ALIGNMENT PIN
-GP: GUIDE POSTS (SEE FIG. 3, SHEET 2)
-K: KAPTON PAD (SEE FIG. 2, SHEET 2)

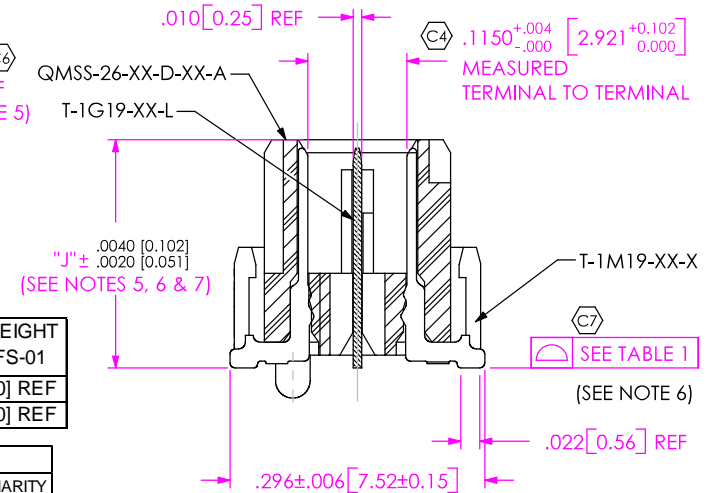
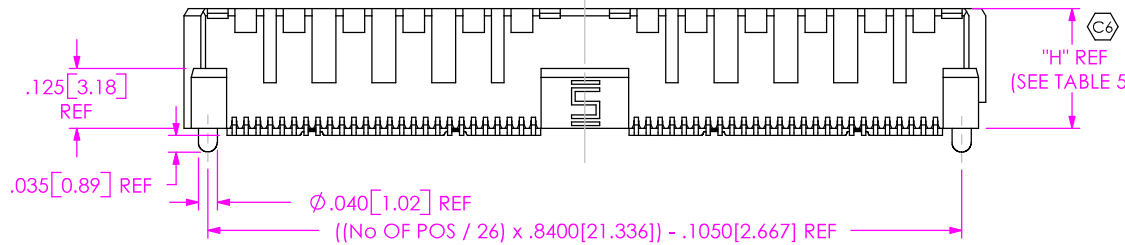
(OPTIONS NOT AVAILABLE IN COMBINATION WITH -PCX OR -RFX)

END OPTION

-PC4: POWER COMBO 4 (SEE FIG. 5, SHEET 4)
-PC8: POWER COMBO 8 (SEE FIG. 5, SHEET 4)
-RF1: 1 RF POS PER END (SEE FIG. 6, SHEET 5)
-RF2: 2 RF POS PER END (SEE FIG. 7, SHEET 5)
-RT1: 1 RT POS PER END (SEE FIG. 8, SHEET 6)

(-PCX & -RFX NOT AVAILABLE IN COMBINATION WITH -A, -GP, OR -K) (END OPTION APPLIES TO BOTH ENDS, COMBINATIONS ARE NOT AVAILABLE)
(-PCX & -RFX AVAILABLE IN POS -026, -052, & -078 ONLY)
(-RFX & -RT1 AVAILABLE ON -10 LEAD STYLE ONLY)
(-RT1 AVAILABLE IN -026, -052, *-078, & *-104 POS WITH -A OPTION ONLY)

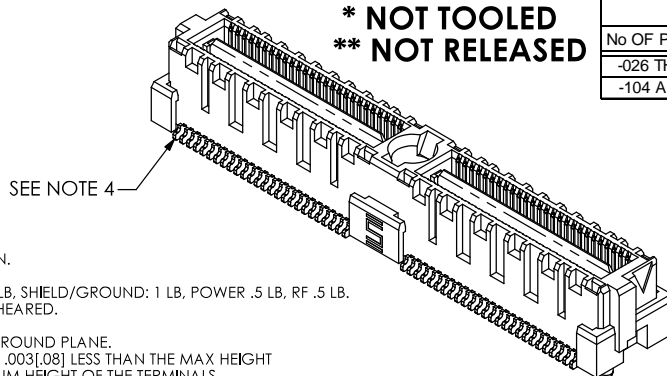
*** = NOT TOOLED**
**** = NOT RELEASED**



LEAD STYLE	"H"	"J"	BODY	TERMINAL	GROUND PLANE	MATED HEIGHT WITH QFS-01
-10	.212 [5.38]	.2268 [5.761]	QMSS-26-02-D-XX-A	T-1M19-10-X	T-1G19-10-L	.394[10.00] REF
-11	.250 [6.35]	.2650 [6.731]	QMSS-26-01-D-XX-A	T-1M19-11-X	T-1G19-11-L	.433[11.00] REF

No OF POSITIONS	No OF BANKS	COPLANARITY
-026 THRU -078	1 THRU 3	.004[.10]
-104 AND *-130	4 AND 5	.006[.15]

*** NOT TOOLED**
**** NOT RELEASED**



NOTES:

1. Ⓢ REPRESENTS A CRITICAL DIMENSION.
2. BURR ALLOWANCE: .0015 MAX.
3. MINIMUM PUSHOUT FORCE: SIGNAL: .5 LB. SHIELD/GROUND: 1 LB. POWER .5 LB. RF .5 LB.
4. ALL TERMINALS FOR THE QMS WILL BE SHEARED.
5. MAX VARIANCE OF .002.
6. DIMENSION APPLIES TO CONTACTS & GROUND PLANE.
7. GROUND PLANE PRESS HEIGHT MUST BE .003[.08] LESS THAN THE MAX HEIGHT OR .001[.03] GREATER THAN THE MINIMUM HEIGHT OF THE TERMINALS.
8. PARTS TO BE PACKAGED IN TRAYS.

UNLESS OTHERWISE SPECIFIED, DIMENSIONS ARE IN INCHES.

TOLERANCES ARE:

DECIMALS ANGLES
.XX: ±.01 [.3] 2°
.XXX: ±.005 [.13]
.XXXX: ±.0020 [.051]

PROPRIETARY NOTE

THIS DOCUMENT CONTAINS INFORMATION CONFIDENTIAL AND PROPRIETARY TO SAMTEC, INC. AND SHALL NOT BE REPRODUCED OR TRANSFERRED TO OTHER DOCUMENTS OR DISCLOSED TO OTHERS OR USED FOR ANY PURPOSE OTHER THAN THAT WHICH IT WAS OBTAINED WITHOUT THE EXPRESSED WRITTEN CONSENT OF SAMTEC, INC.

MATERIAL: DO NOT SCALE DRAWING
INSULATOR: LCP, COLOR: BLACK
TERMINAL & GROUND PLANE: PHOS BRONZE



SHEET SCALE: 1:0.4

SAMTEC

520 PARK EAST BLVD. NEW ALBANY, IN 47150
* PHONE: 812.944.6733 FAX: 812.948.5047
e-Mail: INFO@SAMTEC.COM CODE: 55322

DESCRIPTION:
.635mm DOUBLE ROW TERMINAL STRIP

DWG. NO. QMS-XXX-XX-X-D-X-XXX

BY: E.L.S. 6/09/2003 SHEET 1 OF 6

IN-PROCESS 1

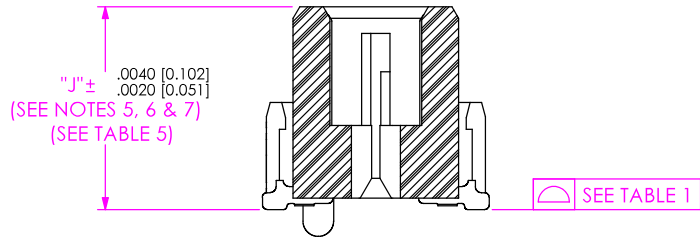
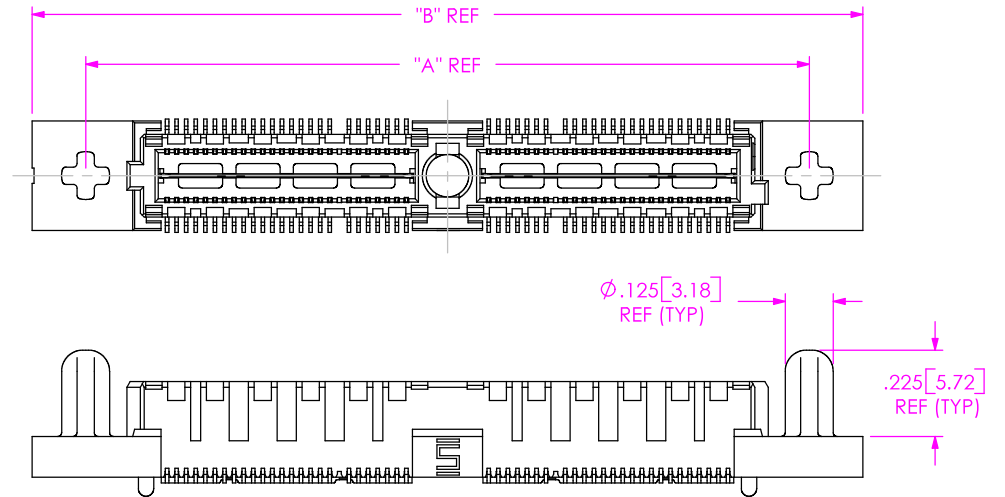


FIG. 3
 -GP: GUIDE POST OPTION
 (QMS-052-11-X-D-A-GP SHOWN)



TERMINAL DETAILS

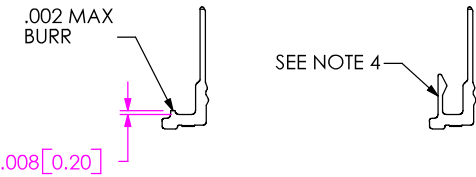
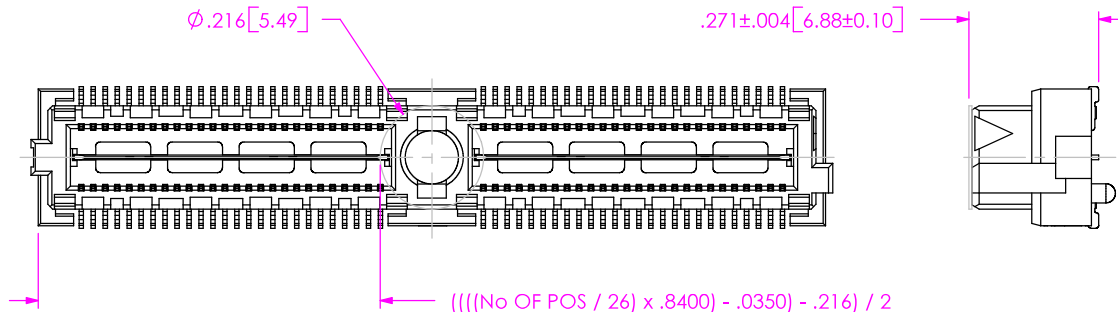


FIG. 2
 -K: KAPTON PAD OPTION (USE K-500-300)
 (QMS-052-11-X-D-A-K SHOWN)



ASSEMBLY	"A"	"B"
QMS-026-01-X-D-A-GP	1.050[26.67]	1.330[33.78]
QMS-052-01-X-D-A-GP	1.890[48.00]	2.170[55.12]
QMS-078-01-X-D-A-GP	2.730[69.34]	3.010[76.45]
QMS-104-01-X-D-A-GP	3.570[90.68]	3.850[97.79]
* QMS-130-01-X-D-A-GP	4.410[112.01]	4.690[119.13]

*** NOT TOOLED**

PROPRIETARY NOTE

THIS DOCUMENT CONTAINS INFORMATION CONFIDENTIAL AND PROPRIETARY TO SAMTEC, INC. AND SHALL NOT BE REPRODUCED OR TRANSFERRED TO OTHER DOCUMENTS OR DISCLOSED TO OTHERS OR USED FOR ANY PURPOSE OTHER THAN THAT WHICH IT WAS OBTAINED WITHOUT THE EXPRESSED WRITTEN CONSENT OF SAMTEC, INC.

DO NOT SCALE DRAWING

SHEET SCALE: 1:0.4

SAMTEC

520 PARK EAST BLVD, NEW ALBANY, IN 47150
 * PHONE: 812.944.6733 FAX: 812.948.5047
 e-Mail: INFO@SAMTEC.COM CODE: 55322

DESCRIPTION:
 .635mm DOUBLE ROW TERMINAL STRIP

DWG. NO.
QMS-XXX-XX-X-D-X-XXX

BY: E.L.S. 6/09/2003 SHEET 2 OF 6

FIG. 4
 -16 & -25 LEAD STYLES
 (QMS-052-16-X-D-A SHOWN)
 (SAME AS FIG. 1, EXCEPT AS SHOWN)
 [NOT TOOLED]

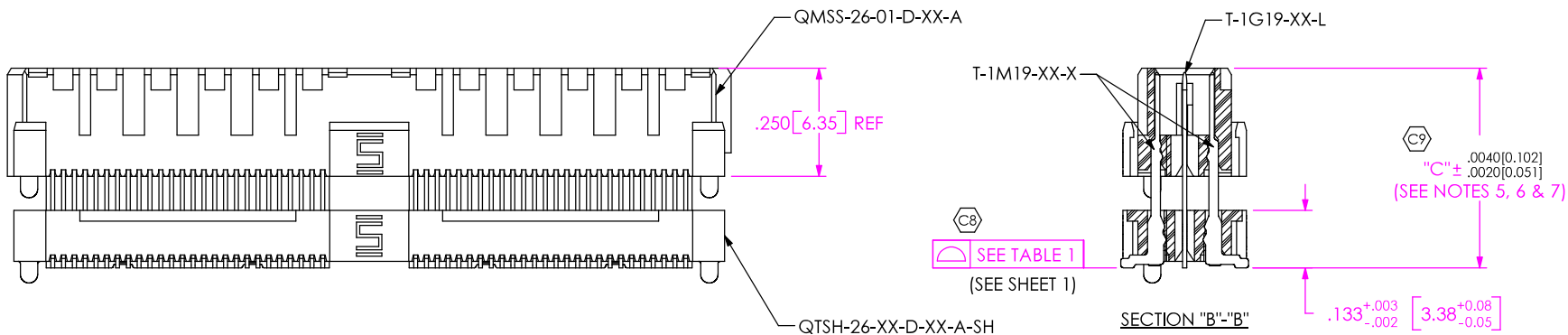
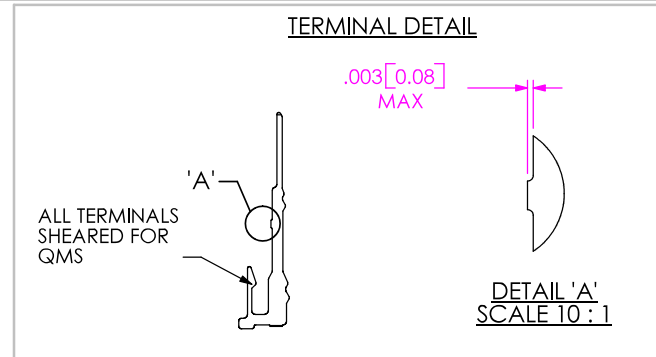
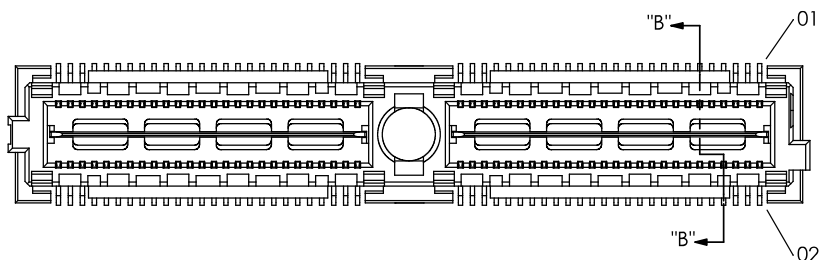


TABLE 3					MATED HEIGHT WITH QSS-01
LEAD STYLE	"C"	TERMINAL	GROUND PLANE	BOTTOM SPACER BODY	
* -16	.4620 [11.735]	T-1M19-16-X	T-1G19-16-L	QTSH-26-01-D-XX-A-SH	.630 [16.00] REF
* -25	.8160 [20.726]	T-1M19-25-X	T-1G19-25-L	QTSH-26-01-D-XX-A-SH	.984 [25.00] REF

* = NOT TOOLED

PROPRIETARY NOTE
 THIS DOCUMENT CONTAINS INFORMATION CONFIDENTIAL AND PROPRIETARY TO SAMTEC, INC. AND SHALL NOT BE REPRODUCED OR TRANSFERRED TO OTHER DOCUMENTS OR DISCLOSED TO OTHERS OR USED FOR ANY PURPOSE OTHER THAN THAT WHICH IT WAS OBTAINED WITHOUT THE EXPRESSED WRITTEN CONSENT OF SAMTEC, INC.

DO NOT SCALE DRAWING

SHEET SCALE: 1:0.4

SAMTEC
 520 PARK EAST BLVD, NEW ALBANY, IN 47150
 * PHONE: 812.944.6733 FAX: 812.948.5047
 e-Mail: INFO@SAMTEC.COM CODE: 55322

DESCRIPTION:
 .635mm DOUBLE ROW TERMINAL STRIP

DWG. NO.
QMS-XXX-XX-X-D-X-XXX

BY: E.L.S. 6/09/2003 SHEET 3 OF 6

FIG. 5 -PCX OPTION

POWER COMBO OPTIONS
 QMS-052-11-X-D-PC4 SHOWN
 (SAME AS FIG. 1, UNLESS OTHERWISE STATED)
 [NOT AVAILABLE WITH -A OR -GP OPTION, AVAILABLE ON LEAD STYLE -10 & -11 ONLY]
 (AVAILABLE ON -026, -052 & -078 POSITIONS ONLY)

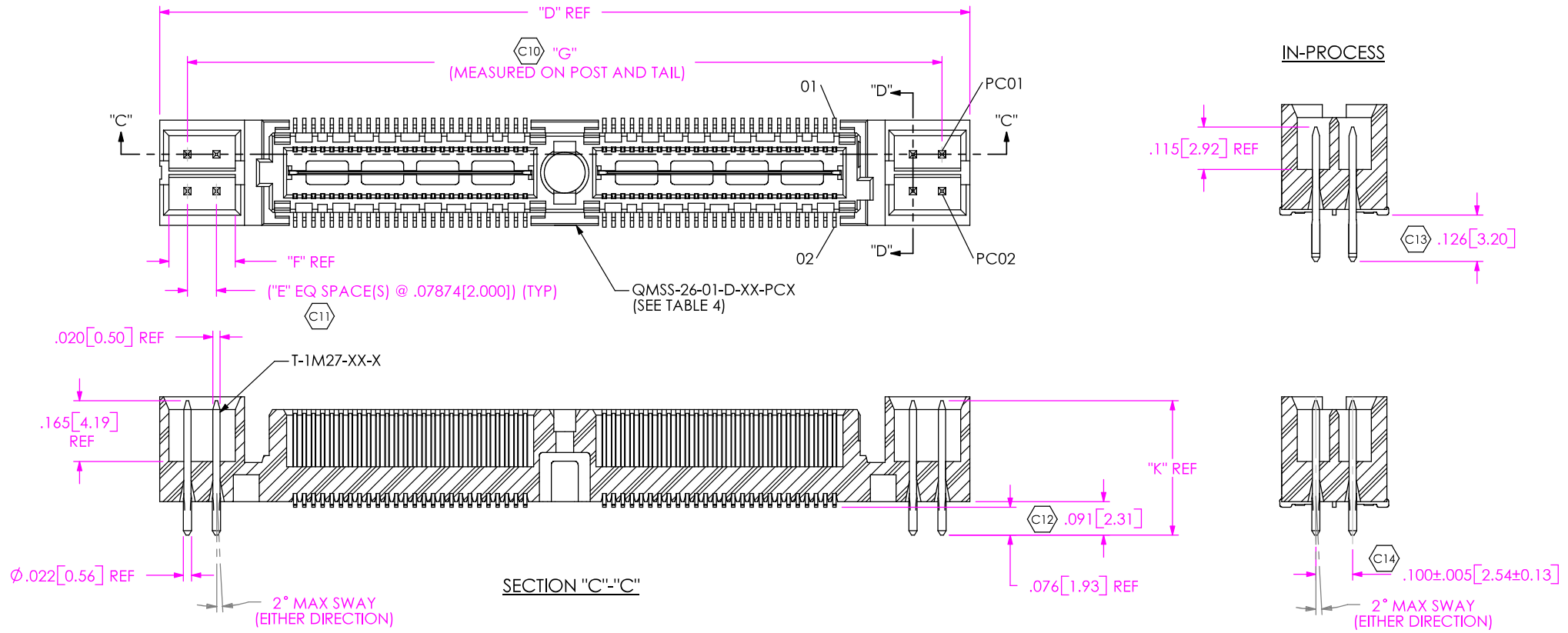


TABLE 4

ASSEMBLY	QMSS-26-01-D-XX-PCX	T-1M27-XX-X	"D"	"E"	"F"	"G"
QMS-026-11-X-D-PC4	QMSS-26-01-D-01-PC4	T-1M27-01-X	1.360[34.54]	1	.180[4.57]	1.209[30.71]
QMS-026-11-X-D-PC8	QMSS-26-01-D-01-PC8	T-1M27-01-X	1.675[42.55]	3	.337[8.56]	1.524[38.71]
QMS-052-11-X-D-PC4	QMSS-26-01-D-02-PC4	T-1M27-01-X	2.200[55.88]	1	.180[4.57]	2.049[52.04]
QMS-052-11-X-D-PC8	QMSS-26-01-D-02-PC8	T-1M27-01-X	2.515[63.88]	3	.337[8.56]	2.364[60.05]
QMS-078-11-X-D-PC4	QMSS-26-01-D-03-PC4	T-1M27-01-X	3.040[77.22]	1	.180[4.57]	2.889[73.38]
QMS-078-11-X-D-PC8	QMSS-26-01-D-03-PC8	T-1M27-01-X	3.355[85.22]	3	.337[8.56]	3.204[81.38]
QMS-026-10-X-D-PC4	QMSS-26-02-D-01-PC4	T-1M27-02-X	1.360[34.54]	1	.180[4.57]	1.209[30.71]
QMS-026-10-X-D-PC8	QMSS-26-02-D-01-PC8	T-1M27-02-X	1.675[42.55]	3	.337[8.56]	1.524[38.71]
QMS-052-10-X-D-PC4	QMSS-26-02-D-02-PC4	T-1M27-02-X	2.200[55.88]	1	.180[4.57]	2.049[52.04]
QMS-052-10-X-D-PC8	QMSS-26-02-D-02-PC8	T-1M27-02-X	2.515[63.88]	3	.337[8.56]	2.364[60.05]
QMS-078-10-X-D-PC4	QMSS-26-02-D-03-PC4	T-1M27-02-X	3.040[77.22]	1	.180[4.57]	2.889[73.38]
QMS-078-10-X-D-PC8	QMSS-26-02-D-03-PC8	T-1M27-02-X	3.355[85.22]	3	.337[8.56]	3.204[81.38]

TABLE 6

LEAD STYLE	"K"
-10	.331[8.41]
-11	.365[9.27]

PROPRIETARY NOTE
 THIS DOCUMENT CONTAINS INFORMATION CONFIDENTIAL AND PROPRIETARY TO SAMTEC, INC. AND SHALL NOT BE REPRODUCED OR TRANSFERRED TO OTHER DOCUMENTS OR DISCLOSED TO OTHERS OR USED FOR ANY PURPOSE OTHER THAN THAT WHICH IT WAS OBTAINED WITHOUT THE EXPRESSED WRITTEN CONSENT OF SAMTEC, INC.

SAMTEC

520 PARK EAST BLVD, NEW ALBANY, IN 47150
 * PHONE: 812.944.6733 FAX: 812.948.5047
 e-Mail: INFO@SAMTEC.COM CODE: 55322

DO NOT SCALE DRAWING

SHEET SCALE: 1:0.4

DESCRIPTION:
 .635mm DOUBLE ROW TERMINAL STRIP

DWG. NO.
QMS-XXX-XX-X-D-X-XXX

BY: E.L.S. 6/09/2003 SHEET 4 OF 6

**** FIG. 6 -RF1 OPTION**
 QMS-052-10-X-D-RF1 SHOWN
 (SAME AS FIG. 1, UNLESS OTHERWISE STATED)
 [NOT AVAILABLE WITH -A OR -GP OPTION, AVAILABLE ON LEAD STYLE -10 ONLY]
 (AVAILABLE ON -026, -052 & -078 POSITIONS ONLY)

TABLE 7			
ASSEMBLY	QMS-26-02-D-XX-RFX	"K"	"L"
QMS-026-10-X-D-RF1	QMS-26-02-D-01-RF1	1.425[36.20]	1.153[29.29]
QMS-026-10-X-D-RF2	QMS-26-02-D-01-RF2	1.925[48.90]	1.653[41.99]
QMS-052-10-X-D-RF1	QMS-26-02-D-02-RF1	2.265[57.53]	1.993[50.62]
QMS-052-10-X-D-RF2	QMS-26-02-D-02-RF2	2.765[70.23]	2.493[63.32]
QMS-078-10-X-D-RF1	QMS-26-02-D-03-RF1	3.105[78.87]	2.833[71.96]
QMS-078-10-X-D-RF2	QMS-26-02-D-03-RF2	3.605[91.57]	3.333[84.66]

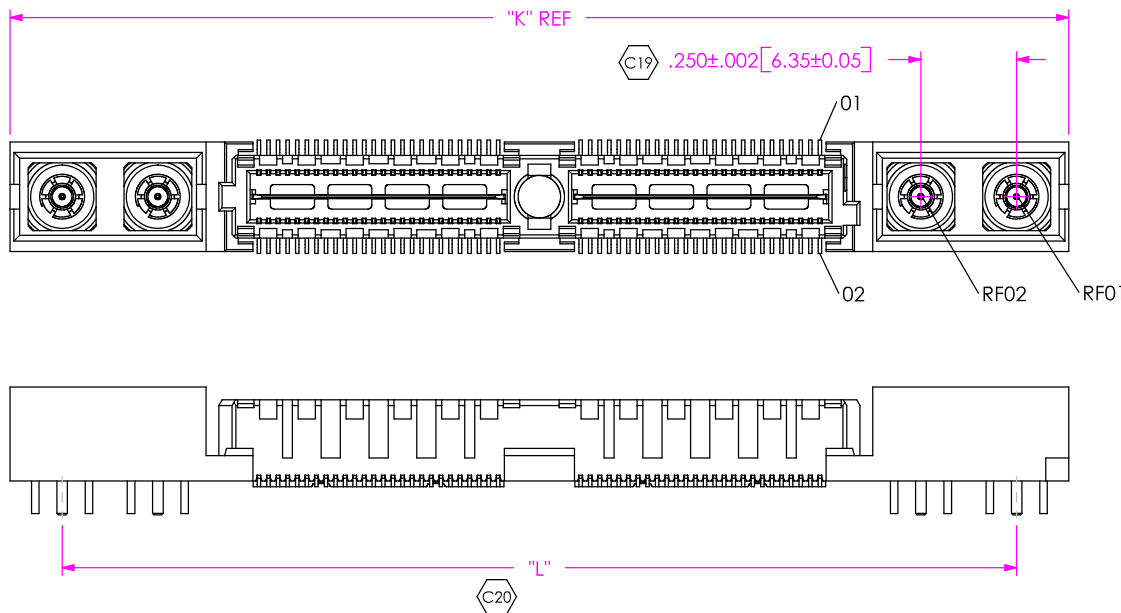
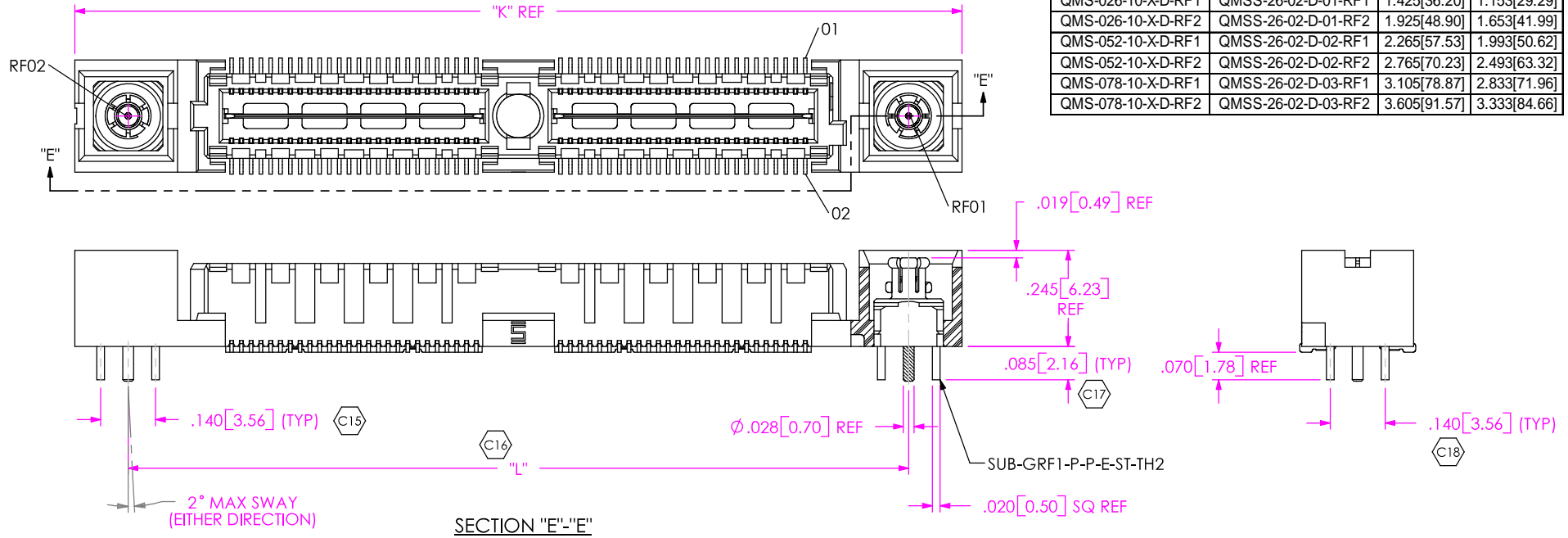


FIG. 7 -RF2 OPTION
 QMS-052-10-X-D-RF2 SHOWN
 (SAME AS FIG. 6, UNLESS OTHERWISE STATED)
 [NOT AVAILABLE WITH -A OR -GP OPTION, AVAILABLE ON LEAD STYLE -10 ONLY]
 (AVAILABLE ON -026, -052 & -078 POSITIONS ONLY)

PROPRIETARY NOTE
 THIS DOCUMENT CONTAINS INFORMATION CONFIDENTIAL AND PROPRIETARY TO SAMTEC, INC. AND SHALL NOT BE REPRODUCED OR TRANSFERRED TO OTHER DOCUMENTS OR DISCLOSED TO OTHERS OR USED FOR ANY PURPOSE OTHER THAN THAT WHICH IT WAS OBTAINED WITHOUT THE EXPRESSED WRITTEN CONSENT OF SAMTEC, INC.

DO NOT SCALE DRAWING

SHEET SCALE: 1:0.4

SAMTEC

520 PARK EAST BLVD, NEW ALBANY, IN 47150
 * PHONE: 812.944.6733 FAX: 812.948.5047
 e-Mail: INFO@SAMTEC.COM CODE: 55322

DESCRIPTION:
 .635mm DOUBLE ROW TERMINAL STRIP

DWG. NO.
QMS-XXX-XX-X-D-X-XXX

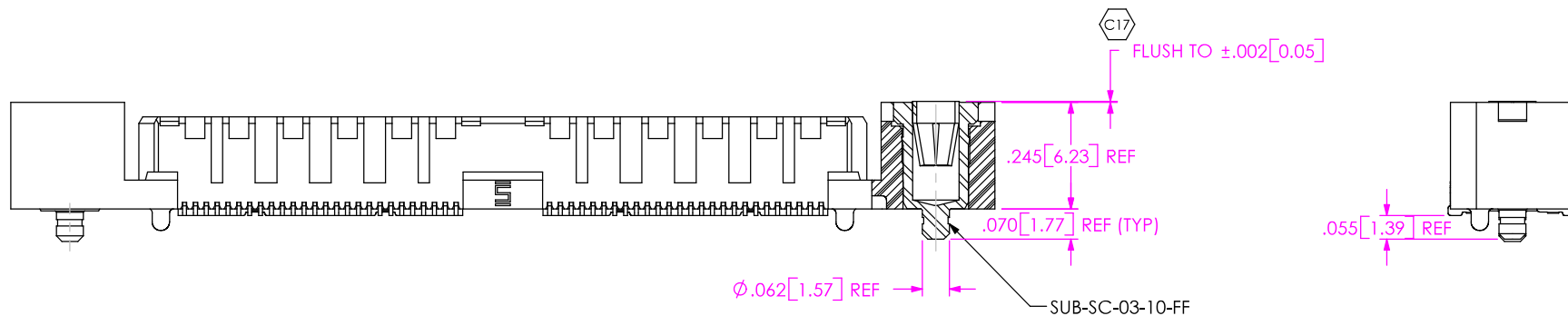
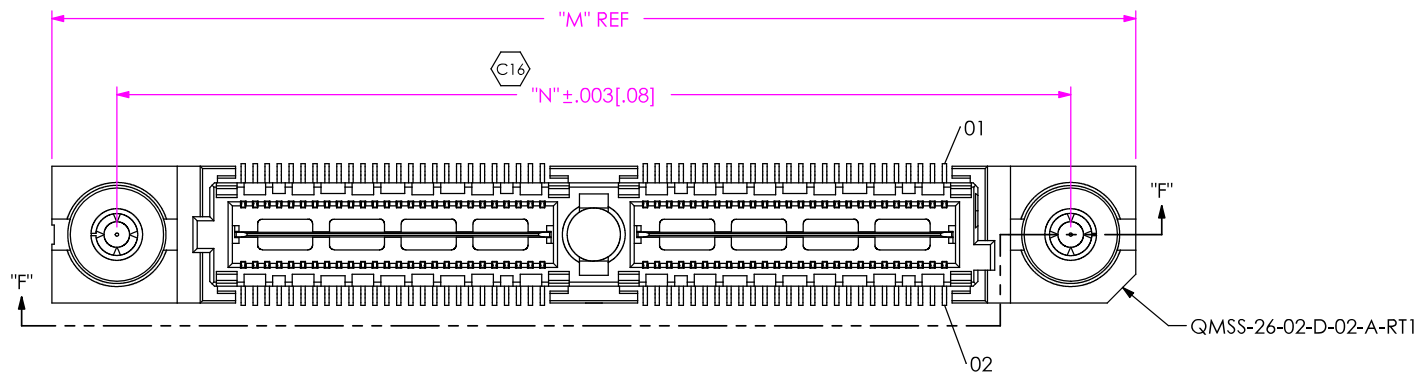
BY: E.L.S. 6/09/2003 SHEET 5 OF 6

FIG. 8
-RT1 OPTION

QMS-052-10-X-D-A-RT1 SHOWN
(SAME AS FIG. 1, UNLESS OTHERWISE STATED)
[NOT AVAILABLE WITH -GP, -PCX OR -RFX OPTION, AVAILABLE ON LEAD STYLE -10 ONLY]
(AVAILABLE ON -026, -052, -078, & -104 POSITIONS WITH -A OPTION ONLY)

TABLE 8			
ASSEMBLY	QMS-26-02-D-XX-A-RTX	"M"	"N"
QMS-026-10-X-D-A-RT1	QMSS-26-02-D-01-A-RT1	1.425[36.20]	1.153[29.29]
QMS-052-10-X-D-A-RT1	QMSS-26-02-D-02-A-RT1	2.265[57.53]	1.993[50.62]
** QMS-078-10-X-D-A-RT1	QMSS-26-02-D-03-A-RT1	3.105[78.87]	2.833[71.96]
** QMS-104-10-X-D-A-RT1	QMSS-26-02-D-04-A-RT1	3.945[100.20]	3.673[93.29]

** - NOT RELEASED



SECTION "F"-"F"

<p>PROPRIETARY NOTE THIS DOCUMENT CONTAINS INFORMATION CONFIDENTIAL AND PROPRIETARY TO SAMTEC, INC. AND SHALL NOT BE REPRODUCED OR TRANSFERRED TO OTHER DOCUMENTS OR DISCLOSED TO OTHERS OR USED FOR ANY PURPOSE OTHER THAN THAT WHICH IT WAS OBTAINED WITHOUT THE EXPRESSED WRITTEN CONSENT OF SAMTEC, INC.</p> <p>DO NOT SCALE DRAWING</p> <p>SHEET SCALE: 1:0.4</p>	<h1>SAMTEC</h1> <p>520 PARK EAST BLVD, NEW ALBANY, IN 47150 * PHONE: 812.944.6733 FAX: 812.948.5047 e-Mail: INFO@SAMTEC.COM CODE: 55322</p>	
	<p>DESCRIPTION: .635mm DOUBLE ROW TERMINAL STRIP</p> <p>DWG. NO. QMS-XXX-XX-X-D-X-XXX</p>	
<p>BY: E.L.S. 6/09/2003 SHEET 6 OF 6</p>		