

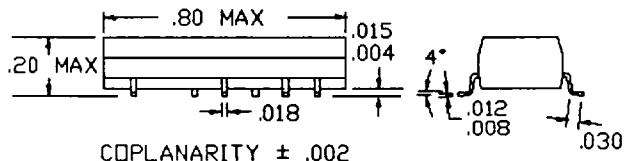
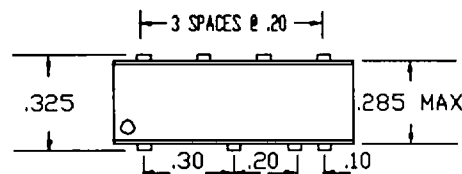
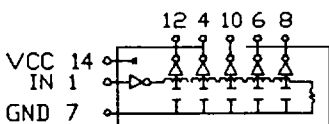
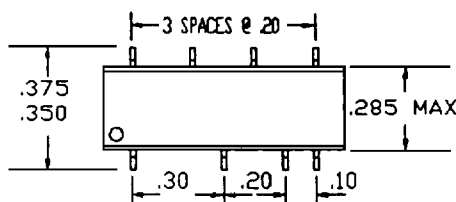
bel / defining a degree of excellence

FAST

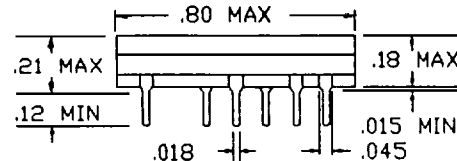
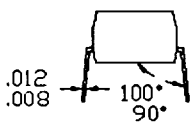
LOGIC DELAY MODULES 5 TAP LEADING EDGE CONTROL

S422 SERIES

A447 SERIES



COPLANARITY ± .002



SMD PART NUMBER	THRU-HOLE PART NUMBER	TOTAL DELAY	DELAY PER TAP	RISE TIME
S422-0010-02	A447-0010-02	* 8 NS	2 NS	3 NS
S422-0015-02	A447-0015-02	* 12 NS	3 NS	3 NS
S422-0020-02	A447-0020-02	* 16 NS	4 NS	3 NS
S422-0025-02	A447-0025-02	25 NS	5 NS	3 NS
S422-0030-02	A447-0030-02	30 NS	6 NS	3 NS
S422-0040-02	A447-0040-02	40 NS	8 NS	3 NS
S422-0050-02	A447-0050-02	50 NS	10 NS	3 NS
S422-0060-02	A447-0060-02	60 NS	12 NS	3 NS
S422-0070-02	A447-0070-02	70 NS	14 NS	3 NS
S422-0080-02	A447-0080-02	80 NS	16 NS	3 NS
S422-0090-02	A447-0090-02	90 NS	18 NS	3 NS
S422-0100-02	A447-0100-02	100 NS	20 NS	3 NS
S422-0125-02	A447-0125-02	125 NS	25 NS	3 NS
S422-0150-02	A447-0150-02	150 NS	30 NS	3 NS
S422-0200-02	A447-0200-02	200 NS	40 NS	3 NS
S422-0250-02	A447-0250-02	250 NS	50 NS	3 NS
S422-0300-02	A447-0300-02	300 NS	60 NS	4 NS
S422-0400-02	A447-0400-02	400 NS	80 NS	4 NS
S422-0500-02	A447-0500-02	500 NS	100 NS	5 NS

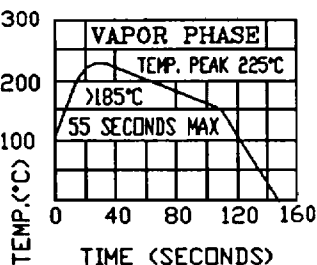
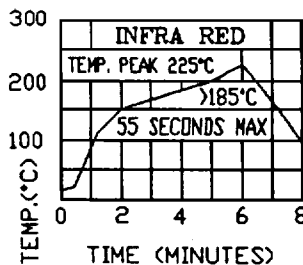
DELAYS MEASURED AT 1.5 V LEVELS ON LEADING EDGE
NO LOADS ON TAPS
RISE TIMES MEASURED FROM 0.75 V TO 2.4 V LEVELS
* REF. DELAY FROM P12, DELAY P1-P12 = 4.5 NS TYP.

OTHER DELAYS AND TOLERANCES UPON REQUEST

TOLERANCES

INPUT TO TAPS ± 2 NS OR 5% WHICHEVER IS GREATER
TAP TO TAP ± 2 NS OR 7% WHICHEVER IS GREATER
RISE/FALL TIMES - MAXIMUM

SMD SOLDERING TEMPERATURE PROFILES



CAT5 R4-1/30/95

TEST CONDITIONS

E _{in}	PULSE VOLTAGE	3.2 VOLTS
T _{rin}	RISE TIME	3.0 NS (10%-90%)
PW	PULSE WIDTH	1.2 x TOTAL DELAY
PP	PULSE PERIOD	4 x PULSE WIDTH
I _{cc1}	SUPPLY CURRENT	35 ma TYPICAL
V _{cc}	SUPPLY VOLTAGE	5.0 VOLTS
T _a	AMBIENT TEMPERATURE	25°C

ELECTRICAL CHARACTERISTICS

	MIN	MAX	UNIT
V _{cc}	4.75	5.25	V
V _{ih}	2.0		V
V _{il}		0.8	V
I _{ik}		-18	mA
I _{oh}		-1	mA
I _{ol}		20	mA
V _{oh}	2.7		V
V _{ol}		0.5	V
V _{ik}		-1.2	V
I _{ih}		20	uA
I _{il}		-0.6	mA
I _{os}	-60	-150	mA
I _{cch}		25	mA
I _{ocl}		40	mA
T _a	0°	+70°	C
PW	MINIMUM INPUT PULSE WIDTH	40% OF TOTAL DELAY	
d	MAXIMUM DUTY CYCLE	50%	
T _c	TEMP. COEFF. OF TOTAL DELAY	100+(25000/TOTAL DELAY) PPM/°C	

DRIVE CAPABILITIES

N _h	LOGIC 1 FANOUT	20 TTL LOADS MAX
N _l	LOGIC 0 FANOUT	10 TTL LOADS MAX

NOTES:

- * TRANSFER MOLDED FOR BETTER RELIABILITY
- * COMPATIBLE WITH TTL AND DTL CIRCUITS
- * TERMINALS: ELECTRO-TIN PLATE PHOSPHOR BRONZE
- * PERFORMANCE WARRANTY IS LIMITED TO SPECIFIED PARAMETERS LISTED

|| SMD ONLY ||

- * TAPE & REEL AVAILABLE - 32mm WIDE x 16mm PITCH 500 PIECES/13' REEL
- * DESIGNED FOR VAPOR PHASE OR IR SOLDERING WITH TEMPERATURES BELOW 230°C FOR UP TO 90 SECONDS
- * SPECIFICATIONS SUBJECT TO CHANGE WITHOUT NOTICE

BELFUSE14