

## FEATURES AND SPECIFICATIONS

### Features and Benefits

- Sizes 2 to 20 circuits
- Molded-in polarizing peg on side of housing

### Reference Information

Product Specification: PSX10-39

Packaging: Bag

UL File No.: E29179

CSA File No.: LR19980

Mates With: 3003 headers or 1.14mm (.045") staked pins

Use With: 2478 and 2578 terminals

Designed In: Inches

### Electrical

Voltage: 250V

Current: 7.0A

Contact Resistance: 20mΩ max.

Dielectric Withstanding Voltage: 1500V

Insulation Resistance: 500K MΩ min.

### Mechanical

Contact Insertion Force: 4 lb max.

Contact Retention to Housing: 8 lb min.

Wire Pull-Out Force: 5 lb min. (depends on AWG)

Mating Force: 24 oz max.

Unmating Force: 4 oz min.

Normal Force: 350g

Durability: 25 cycles Tin

### Physical

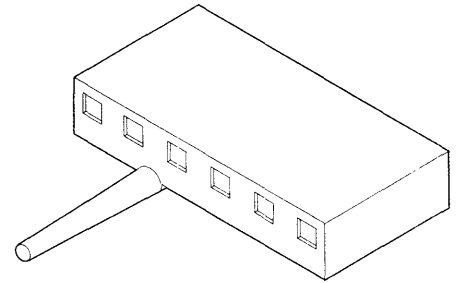
Housing: Nylon, UL 94V-2

Operating Temperature: 0 to +75°C

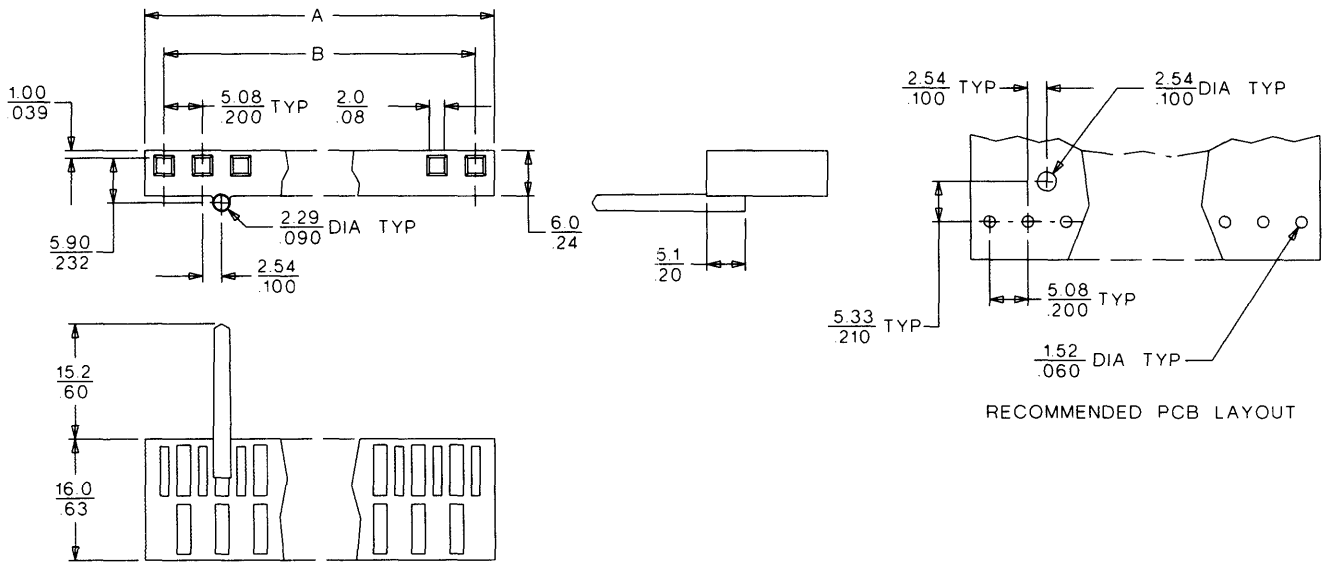
**molex**® 5.08mm (.200") Pitch  
KK®

**Crimp Terminal Housing**

**3011**



## CATALOG DRAWING (FOR REFERENCE ONLY)



## ORDERING INFORMATION AND DIMENSIONS

Circuits	Order No.	Dimension	
		A	B
2 (a)	• 10-13-1024	10.16 (.400)	5.08 (.200)
3 (b)	• 10-13-1034	15.24 (.600)	10.16 (.400)
4 (b)	• 10-13-1044	20.32 (.800)	15.24 (.600)
5 (b)	• 10-13-1055	25.40 (1.000)	20.32 (.800)
6 (b)	• 10-13-1064	30.48 (1.200)	25.40 (1.000)
7 (b)	10-13-1075	35.56 (1.400)	30.48 (1.200)
8 (b)	10-13-1085	40.64 (1.600)	35.56 (1.400)
9 (b)	• 10-13-1094	45.72 (1.800)	40.64 (1.600)
10 (b)	• 10-13-1106	50.80 (2.000)	45.72 (1.800)
11 (b)	• 10-13-1114	55.88 (2.200)	50.80 (2.000)

Circuits	Order No.	Dimension	
		A	B
12 (b)	• 10-13-1125	60.96 (2.400)	55.88 (2.200)
13 (b)	• 10-13-1134	66.04 (2.600)	60.96 (2.400)
14 (b)	10-13-1144	71.12 (2.800)	66.04 (2.600)
15 (b)	10-13-1154	76.20 (3.000)	71.12 (2.800)
16 (b)	10-13-1164	81.28 (3.200)	76.20 (3.000)
17 (b)	10-13-1174	86.36 (3.400)	81.28 (3.200)
18 (b)	10-13-1184	91.44 (3.600)	86.36 (3.400)
19 (b)	10-13-1194	96.52 (3.800)	91.44 (3.600)
20 (b)	10-13-1204	101.60 (4.000)	96.52 (3.800)

• US and European Standard Product, available through Molex franchised distributors

Polarizing peg between circuits: (a) 1 and 2; (b) 2 and 3

D  
3.00 to 7.92mm (.118 to .312") Pitch