

Plugs / Sockets
Single-pole, Non-insulated
2 mm to 100 mm dia.
up to 6000 A

The standard plug connections are made of brass (crimp sleeve is copper) and are silver plated approx. 6 µm. These types of plug connections are suitable as cable couplings, panel mounting sockets and cable plugs for instruments and as current-supply connections for rack and panel technology, etc.

MC® plug connections are not suitable to be disconnected under load. Special connections with other dimensions or materials as well as special silver plating for higher plugging frequency are available on request.

Attention: Before first time use, all threads and mating sliding surfaces of contact parts should be covered with a thin lubricating film. See page 16 for ordering information.

Without locking device



B...N, pg. 313



BL...N, pg. 314



BL...A, pg. 315



S...N, pg. 316



SP...N, pg. 317

With locking device



B...AR-N, pg. 318



BP...AR-N, pg. 319



S...AR-N, pg. 320



SP...AR-N, pg. 321



SIG...AR-N, pg. 322

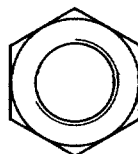
Accessories



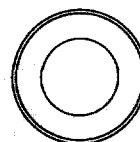
H...N/M, pg. 323



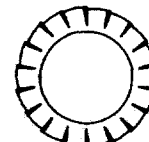
RH..., pg. 324



Mu, pg. 325



U, pg. 325



F, pg. 325

Socket B...N with threaded metric stud

B...N

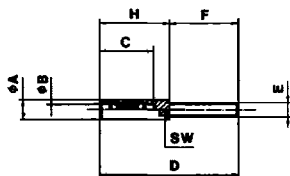
Suitable to screw into cable lugs, busbars, contact blocks, or insulated housings. These sockets are distinctive for their simple handling. Mates for this socket are plugs type S...N or SP...N. Multilam™ made of CuBe.



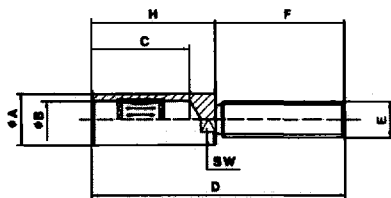
Type	Part #	Dimensions								Multilam™	Withdrawal force	Insertion force	Max. tightening torque	Weight	Rated current (80°C)	Rated current (150°C)	Contact resistance	Short-circuit current 1s)	Short-circuit current 3s)	Surge current
		A	B	C	D	E	F	H	**SW											
B2N	01.0001	5.5	2	16.5	36	M3	16	20	4	LAI	6	8	0.5	0.004	35	50	300	0.5	0.4	2.0
B3N	01.0002	6	3	16.5	40	M4	20	20	5	LAI	8	10	1.2	0.005	40	55	200	0.8	0.65	3.0
B4N	01.0003	7	4	19.5	50	M5	25	25	6	LAI	15	22	2.0	0.009	65	90	200	1.2	0.9	4.0
B5N	01.0004	8.5	5	19.5	50	M5	25	25	7	LAI	15	22	2.0	0.011	70	100	150	1.5	1.0	5.5
B6N	01.0005	10	6	19.5	53	M6	28	25	8	LAI	20	25	3.0	0.015	100	180	100	2.5	1.5	8.0
B8N	01.0006	14	8	34	78	M8	36	42	11	LAI	20	25	6.0	0.047	130	240	60	4.5	3.0	17
B10N	01.0007	16	10	34	84	M10	42	42	13	LAI	30	35	10	0.066	200	350	50	5.5	4.0	20
B12N	01.0008	18	12	34	90	M12	48	42	13	LAI	30	35	16	0.087	230	420	40	7.0	5.5	25
B14N*	01.0009	20	14	38	98	M14	50	48	17	LAI	45	50	22	0.121	300	500	35	11.5	8.0	35
B16N	01.0010	22	16	38	106	M16	58	48	19	LAI	65	70	30	0.160	350	540	25	13.5	10	40
B18N*	01.0011	25	18	42	110	M16	58	52	22	LAI	75	100	30	0.193	400	640	20	15.0	11	45
B20N	01.0012	28	20	42	122	M18	70	52	24	LAI	80	120	40	0.265	500	760	15	17.0	12.5	50
B25N*	01.0013	38	25	62	149	M20	74	75	32	2LAI	80	120	52	0.588	580	820	10	27.5	20	100
B30N*	01.0014	42	30	62	156	M24x2	81	75	36	2LAI	100	120	80	0.726	900	1500	9	35	25	120
B35N*	01.0015	48	35	62	165	M30x2	90	75	41	2LAI	120	150	150	1.057	1200	2000	8	40	30	140
B40N*	01.0016	52	40	62	180	M36x3	105	75	46	2LAI	120	150	250	1.400	1500	2200	7	45	35	160

* Only on request, not in stock 1) r.m.s. **SW = wrench size

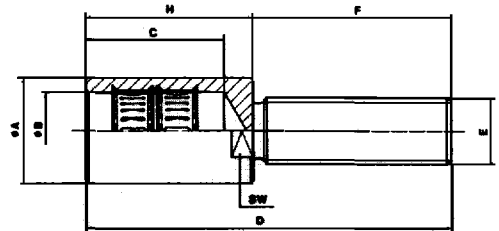
B2N—B6N



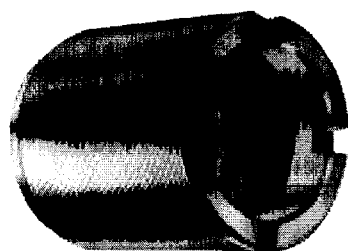
B8N—B20N



B25N—B40N



BL...N



Socket BL...N with external metric thread

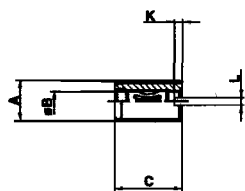
Suitable to screw directly into busbars, contact blocks, conductor rails, housings etc. One end slotted for easy mounting. Socket shown must be screwed into busbar with 2 nuts and 2 washers.

Multilam™ made of CuBe.

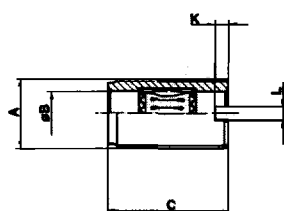
Type	Part #	Dimensions					Multilam™	Withdrawal force N	Insertion force N	Max. tightening torque Nm	Weight kg	Rated current (80°C) A	Rated current (150°C) A	Contact resistance μΩ	Short-circuit current (1s) ¹⁾ kA	Short-circuit current (3s) ¹⁾ kA	Surge current kA
		A	B	C	K	L											
BL2N*	02.0001	M8x0.75	2	16.5	1.5	1.5	LAIII	6	8	2.5	0.005	35	50	300	0.5	0.4	2.0
BL3N*	02.0002	M8x0.75	3	16.5	1.5	1.5	LAIII	8	10	2.5	0.005	40	55	200	0.6	0.65	3.0
BL4N	02.0003	M8x0.75	4	19.5	1.5	1.5	LAIII	15	22	2.5	0.005	65	90	200	1.2	0.9	4.0
BL5N	02.0004	M10x1	5	19.5	2	1.5	LAIII	15	22	5.0	0.007	70	100	150	1.5	1.0	5.5
BL6N	02.0005	M12x1	6	19.5	2.5	2	LAIII	20	25	10.0	0.011	100	180	100	2.5	1.5	8.0
BL6AR-N**	02.0201	M14x1	6	28	1.5	2	LAIII	25	30	10.0	0.023	100	180 ²⁾	100	2.5	1.5	8.0
BL8N	02.0006	M14x1	8	34	2.5	2.5	LAI	20	25	13	0.021	130	240	60	4.5	3.0	17
BL10N	02.0007	M18x1	10	34	3.5	3.5	LAI	30	35	22	0.039	200	350	50	5.5	4.0	20
BL12N	02.0008	M20x1	12	34	3.5	3.5	LAI	30	35	30	0.043	230	420	40	7.0	5.5	25
BL14N*	02.0009	M22x1	14	38	4	4	LAI	45	50	35	0.057	300	500	35	11.5	8.0	35
BL16N	02.0010	M24x1	16	38	4	4	LAI	65	70	35	0.063	350	540	25	13.5	10	40
BL18N*	02.0011	M28x1	18	42	4	4	LAI	75	100	55	0.105	400	640	20	15	11	45
BL20N	02.0012	M30x1	20	42	4	5	LAI	80	120	65	0.114	500	760	15	17	12	50
BL25N*	02.0013	M42x1.5	25	62	5	5	2LAI	80	120	150	0.394	580	820	10	27	20	100
BL30N	02.0014	M48x1.5	30	62	5	5	2LAI	100	120	200	0.486	900	1500	9	35	25	120
BL35N	02.0015	M50x1.5	35	62	5	5	2LAI	120	150	220	0.427	1200	2000	8	40	30	140
BL40N	02.0016	M55x1.5	40	62	6	6	2LAI	120	150	275	0.472	1500	2200	7	45	35	160
BL45N*	02.0017	M60x2	45	62	6	6	2LAI	120	150	430	0.502	1800	2500	7	50	40	175
BL50N	02.0018	M65x2	50	62	8	7	2LAI	130	150	500	0.558	2000	2800	6	55	45	195
BL60N*	02.0019	M80x2	60	86	8	8	3LAI	300	350	750	1.357	3000	4000	6	70	55	320
BL70N	02.0020	M90x2	70	86	8	8	3LAI	400	450	1000	1.546	3700	4500	6	90	70	400
BL80N*	02.0021	M100x2	80	86	8	8	3LAI	500	540	1500	1.702	4200	5400	5	110	80	450
BL90N*	02.0022	M110x2	90	86	8	8	3LAI	550	600	2000	1.873	4500	5800	5	130	110	500
BL100N*	02.0023	M120x2	100	86	8	8	3LAI	630	670	2500	2.094	5000	6300	5	150	120	550

* Only on request, not in stock ** With locking system 1) r.m.s. 2) can not be used above 80° C

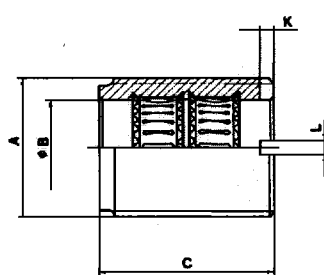
BL2N—BL6AR-N



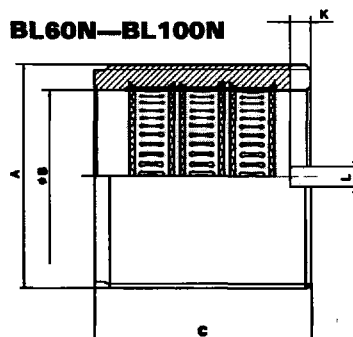
BL8N—BL20N



BL25N—BL50N



BL60N—BL100N



Socket BL...A
with external Multilam™ for press-fit

BL...A

Suitable for pipe-joint connections, contact blocks, conductor rails, etc. The BL...A distinctive for its simple handling for easy connection and disconnection. Mates for this socket include S...N and SP...N. Multilam™ made of CuBe.



Type	Part #	Dimensions				Multilam™	Withdrawal force	Insertion force	Max. assembling force	Weight	Rated current (80°C)		Contact resistance	Short-circuit current 1s ¹)	Short-circuit current 3s ¹)	Surge current
		A	B	C	E						A	A				
BL25A*	02.0525	42	25	62	42	2LAI	80	120	2.0	0.420	580	820	10	27	20	100
BL30A	02.0526	48	30	62	48	2LAI	100	120	2.5	0.524	900	1500	9	35	25	120
BL35A*	02.0527	50	35	62	50	2LAI	120	150	2.5	0.438	1200	2000	8	40	30	140
BL40A*	02.0528	55	40	62	55	2LAI	120	150	2.7	0.491	1500	2200	7	45	35	160
BL45A*	02.0529	60	45	62	60	2LAI	120	150	3.0	0.550	1800	2500	7	50	40	175
BL60A*	02.0531	80	60	86	80	3LAI	300	350	4.0	1.440	3000	4000	6	70	55	320
BL70A*	02.0532	90	70	86	90	3LAI	400	450	4.5	1.645	3700	4500	6	90	70	400

* Only on request, not in stock.

Do you require special dimensions? Just send us a sketch and the necessary technical data.

BL25A—BL45A

BL60A—BL70A

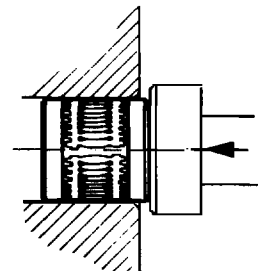
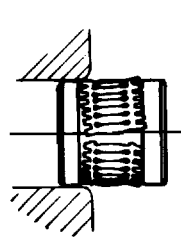
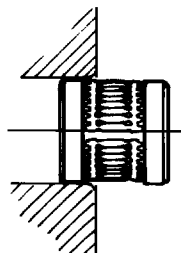
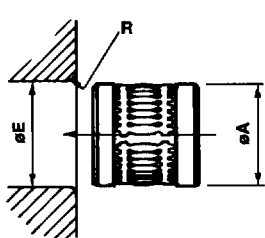
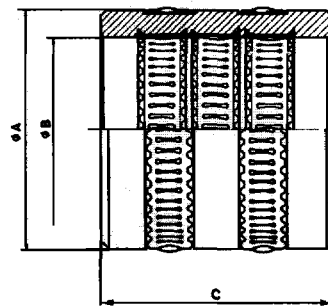
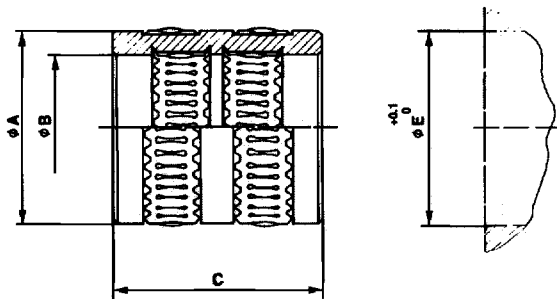


Fig. 1: Check the hole diameter.

Fig. 2: Insert socket by hand.

Fig. 3: Wrong assembly! The multilam's teeth project out over the groove.

Fig. 4: Insert socket.

S...N



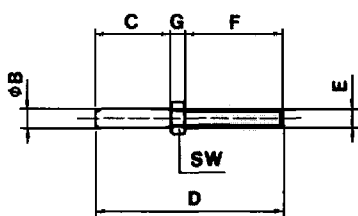
Plug S...N with threaded metric stud

Suitable to screw into cable lugs, busbars, contact blocks, or insulated housings for rack and panel technology. Mates with all sockets with the same corresponding nominal diameter.

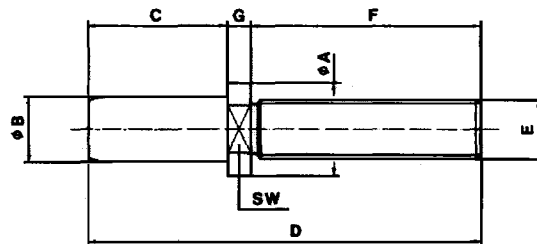
Type	Part #	Dimensions							Max. tightening torque	Weight	Rated current (80°C)	Rated current (150°C)	
		A	B	C	D	E	F	G					**SW
S2N	04.0001	2	16.5	35.5	M3	16	3	4	0.5	0.002	35	50	
S3N	04.0002	3	16.5	40	M4	20	3.5	5	1.2	0.003	40	55	
S4N	04.0003	4	19.5	48.5	M5	25	4	6	2.0	0.006	65	90	
S5N	04.0004	5	19.5	48.5	M5	25	4	7	2.0	0.008	70	100	
S6N	04.0005	6	19.5	51.5	M6	28	4	8	3.0	0.012	100	180	
S8N	04.0006	8	34	75	M8	36	5	11	6.0	0.030	130	240	
S10N	04.0007	10	34	81	M10	42	5	13	10	0.050	200	350	
S12N	04.0008	18	12	34	87	M12	48	5	13	16	0.077	230	420
S14N*	04.0009	20	14	38	95	M14	50	7	17	22	0.118	300	500
S16N	04.0010	22	16	38	103	M16	58	7	19	30	0.166	350	540
S18N*	04.0011	25	18	42	107	M16	58	7	22	30	0.199	400	640
S20N	04.0012	28	20	42	119	M18	70	7	24	40	0.265	500	760
S25N*	04.0013	38	25	62	145	M20	74	9	32	52	0.496	580	820
S30N*	04.0014	42	30	62	152	M24x2	81	9	36	80	0.730	900	1500
S35N*	04.0015	48	35	62	162	M30x2	90	10	41	150	1.126	1200	2000
S40N*	04.0016	52	40	62	178	M36x3	105	11	46	250	1.623	1500	2200
S45N*	04.0017	60	45	62	217	M42x3	140	15	50	350	2.635	1800	2500
S50N*	04.0018	65	50	62	217	M48x3	140	15	55	450	3.345	2000	2800

* Only on request, not in stock. ** SW = wrench size in mm

S2N—S10N



S12N—S40N



Plug SP...N with copper crimp sleeve

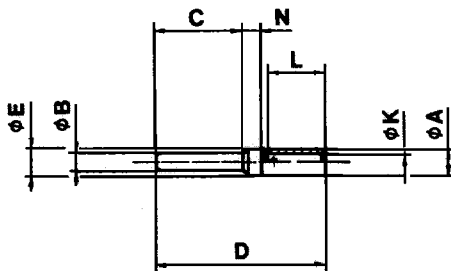
SP...N

Suitable for hexagonal crimping or soldering. Mates with all sockets with the same corresponding nominal diameter.

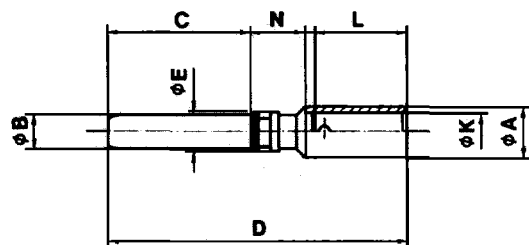


Type	Part #	Dimensions								Weight kg	Rated current (80°C) A	Cable cross section mm ²
		A	B	C	D	E	K	G	N			
SP3N/4	05.0003	5	3	16.5	33.5	6	3	10	5	0.004	30	4
SP3N/6	05.0004	6	3	16.5	33.5	6	4	12	5	0.004	35	6
SP4N/6	05.0005	6	4	19.5	38	6	4	12	4.5	0.005	40	6
SP4N/10	05.0006	8	4	19.5	43.5	9	5	14	8	0.009	50	10
SP5N/10	05.0007	8	5	19.5	43	9	5	14	7.5	0.011	60	10
SP6N/10	05.0009	8	6	19.5	42.5	9	5	14	7	0.012	80	10
SP6N/16	05.0010	9	6	19.5	42.5	9	6	14	7	0.011	100	16
SP8N/16	05.0012	9	8	34	56	9	6	14	6	0.020	100	16
SP8N/25	05.0013	11	8	34	65	9	8	17	12	0.030	120	25

SP3N/4—SP4N/6

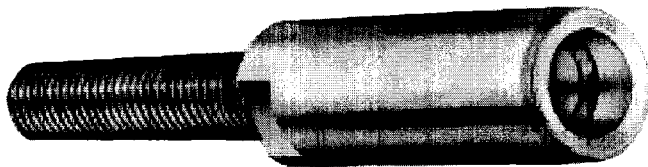


SP4N/10—SP8N/16



Sockets, non-insulated, locking - 6, 10, and 14 mm dia.

B...AR-N



Socket B...AR-N with locking feature and threaded metric stud

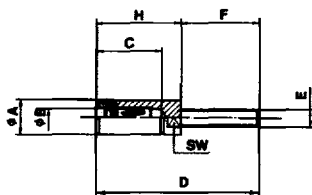
Mating plugs S...AR-N or SP...AR-N are inserted until the ring snaps into place. To release, lightly turn and push in plug, then pull out. B...AR-N sockets are suitable to screw into cable terminal lugs, busbars, contact blocks or as mounting sockets built into insulated housings. Colored insulating sleeves available.

Type	Part #	Dimensions								Multilam™	Withdrawal force	Insertion force	Max. tightening torque	Weight	Rated current (80°C)	Rated current (150°C)	Contact resistance	Short-circuit current 1s ¹⁾	Short-circuit current 3s ¹⁾	Surge current
		A	B	C	D	E	F	H	SW											
B6AR-N-S	01.0200	12	6	23	58	M6	28	30	10	LAIII	25	30	3.0	0.026	100	180	100	2.5	1.5	8.0
B10AR-N	01.0202	16	10	43	98	M10	50	48	13	LAI	35	40	10	0.072	200	350	60	5.0	3.5	15
B14AR-N	01.0203	21	14	43	98	M14	50	48	17	LAI	50	55	22	0.127	300	500	35	10	7	30

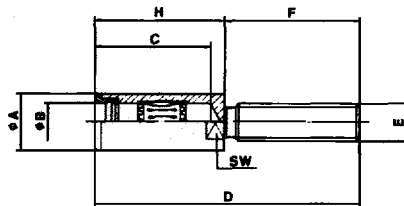
Insulating sleeves

Type	Part #	Length	O.D.	Colors
IH6AR	14.5006	26.5	14	21, 22, 23, 24, 25, 28, 29
IH10AR-L	14.5012	36.5	18.5	21, 22, 23, 24, 25
IH10AR-K	14.5013	21	18.5	21, 22, 23, 24, 25
IH14AR	14.5032	32	23.5	21, 22, 23, 24, 25, 29

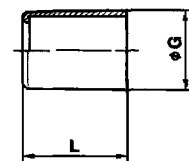
B6AR-N-S



B10AR-N—B14AR-N



IH



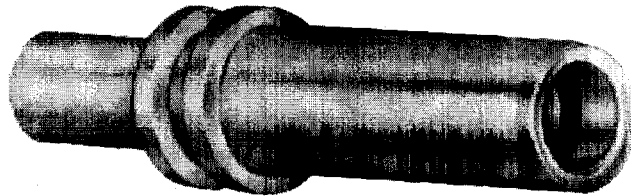
1) r.m.s.

20 - green/yellow 21 - black 22 - red 23 - blue 24 - yellow 25 - green 26 - violet 27 - brown 28 - gray 29 - white 33 - transparent

Socket BP...AR/... with locking feature and copper crimp sleeve.

BP...AR/...-N

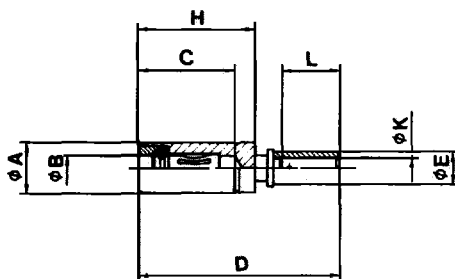
Mating plugs S...AR-N or SP...AR-N are inserted until the ring snaps into place. To release, lightly turn and push in plug, then pull out.
Insulating sleeves and cable insulators are also available for this socket.



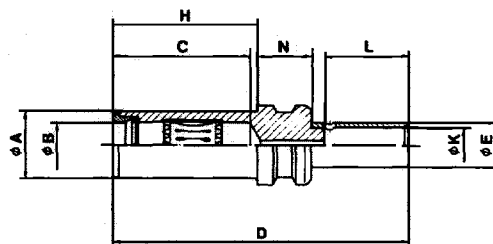
Type	Part #	Dimensions									Multilam™	Withdrawal force N	Insertion force N	Weight kg	Rated current (80°C) A	Contact resistance μΩ	Short-circuit current 1s ¹ kA	Short-circuit current 3s ¹ kA	Surge current kA	Cable cross section mm ²
		A	B	C	D	E	K	H	L	N										
BP6AR-N/10-S	01.0310	12	6	23	48.5	8	5	28	14		LAlII	25	30	0.026	80	100	1.2	0.7	8.0	10
BP6AR-N/16-S	01.0311	12	6	23	48.5	9	6	28	14		LAlII	25	30	0.026	100	100	2.0	1.0	8.0	16
BP6AR-N/25-S	01.0312	12	6	23	54.5	11	8	28	16		LAlII	25	30	0.026	130	160	2.5	1.5	8.0	25
BP10AR-N/25	01.0303	16	10	43	76	11	8	45	15	12	LAl	35	40	0.083	130	60	3.0	1.5	20	25
BP10AR-N/35	01.0304	16	10	43	81	13	9	45	20	12	LAl	35	40	0.084	150	60	4.0	2.5	20	35
BP10AR-N/50	01.0305	16	10	43	88	14.5	11	45	27	12	LAl	35	40	0.089	180	60	5.5	3.0	20	50
BP14AR-N/50	01.0306	21	14	43	93	14.5	11	45	27	17	LAl	50	55	0.145	190	35	5.5	3.0	40	50
BP14AR-N/70	01.0307	21	14	43	93	17	13	45	27	17	LAl	50	55	0.149	240	35	8.0	5.0	40	70
BP14AR-N/95	01.0308	21	14	43	95	20	15	45	29	17	LAl	50	55	0.163	280	35	11.5	6.5	40	95
BP14AR-N/120	01.0309	21	14	43	96	22	17	45	30	17	LAl	50	55	0.168	300	35	12	8	40	120

Data valid only for copper-cable connections.

BP6AR-N/10-S — BP6AR-N/25-S



BP10AR-N/25—BP14AR-N/120



1) r.m.s.

Plugs, non-insulated, locking - 6, 10, and 14 mm dia.

S...AR-N

Plug S...AR-N with locking feature and threaded metric stud

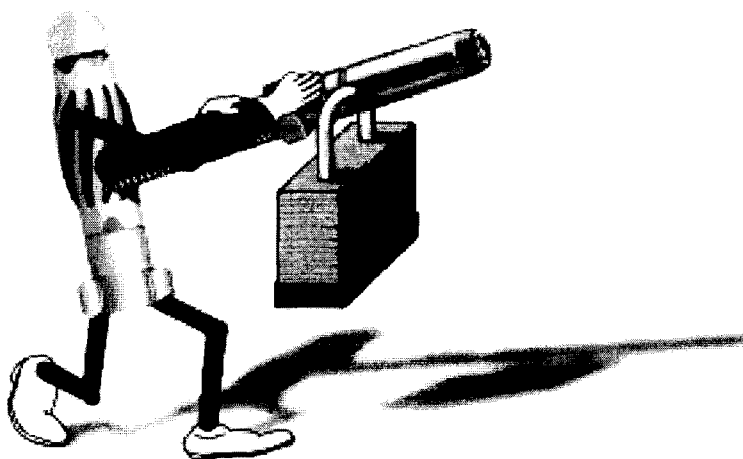
Suitable to screw into cable terminal lugs, busbars, contact blocks, or as an instrument plug built into insulated housings. Mates with all sockets with locking device and the same corresponding nominal diameter. To lock, insert plug into socket until locking feature engages. To release, simply turn, push in plug, then pull out.



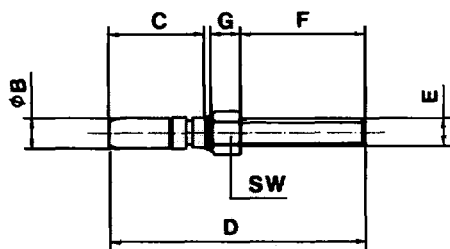
Type	Part #	Dimensions								Max. tightening torque Nm	Weight kg	Rated current (80°C) A
		A	B	C	D	E	F	G	*SW			

S6AR-N	04.0201	6	22	58	M6	28	7	8	3.0	0.014	100
S10AR-N	04.0202	10	42.5	98	M10	50	5.5	13	10	0.060	200
S14AR-N	04.0203	21	14	43	M14	50	7	17	22	0.123	300

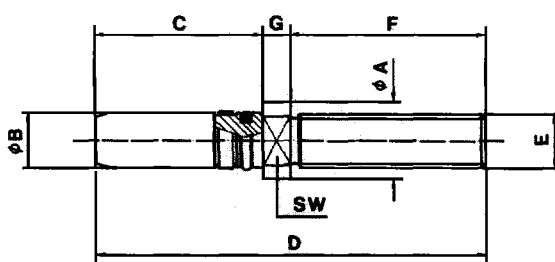
* SW = wrench size in mm



S6AR-N



S10AR-N—S14AR-N



Plugs, non-insulated, locking - 6, 10, and 14 mm dia.

Plug SP...AR-N with locking feature and copper crimp sleeve

SP...AR-N/...

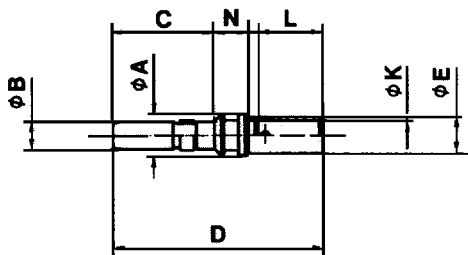
Suitable for all sockets with locking device and with the same nominal diameter. To lock, insert plug into socket until locking feature engages. To release, simply turn, push in plug, then pull out.



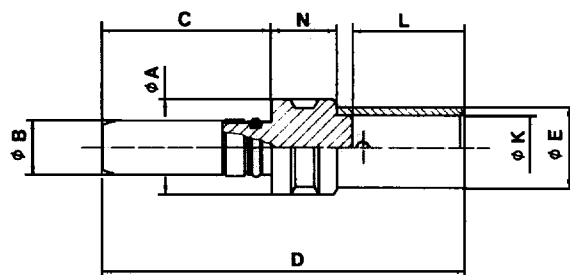
Type	Part #	Dimensions								Weight kg	Rated current (80°C) A	Cable cross section mm ²
		A	B	C	D	E	K	L	N			
SP6AR-N/10	05.0201	9	6	22	45	8	5	14	7	0.012	80	10
SP6AR-N/16	05.0202	9	6	22	45	9	6	14	7	0.013	100	16
SP6AR-N/25	05.0210	9	6	22	51	11	9	20	7	0.016	130	25
SP10AR-N/25	05.0203	20.5	10	42.5	73.5	11	8	16	12	0.066	130	25
SP10AR-N/35	05.0204	20.5	10	42.5	78.5	13	9	21	12	0.073	150	35
SP10AR-N/50	05.0205	20.5	10	42.5	85.5	14.5	11	28	12	0.074	180	50
SP14AR-N/50	05.0206	25	14	43	91	14.5	11	27	17	0.133	190	50
SP14AR-N/70	05.0207	25	14	43	91	17	13	27	17	0.138	240	70
SP14AR-N/95	05.0208	25	14	43	93	20	15	29	17	0.150	280	95
SP14AR-N/120	05.0209	25	14	43	94	22	17	30	17	0.158	300	120

Data valid only for copper-cable connections.

SP6AR-N/10—SP6AR-N/25

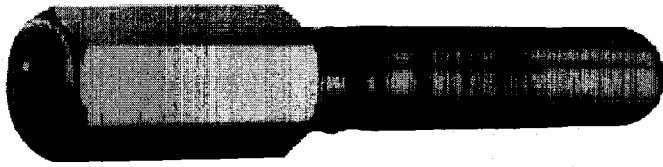


SP10AR-N/25—SP14AR-N/120



Plugs, non-insulated, locking - 6, 10, and 14 mm dia.

SIG...AR-N/...

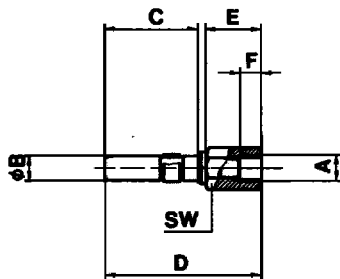


Plug SIG...AR-N with locking feature and internal metric thread

Suitable for all sockets with locking feature with the same nominal diameter. To lock, insert plug into socket until locking device engages. To release, simply turn, push in plug, then pull out.

Type	Part #	Dimensions							Max. tightening torque Nm	Weight kg	Rated current (90°C) A
		A	B	C	D	E	F	SW			
SIG6AR-N/3	06.0001	M3	6	22	36.5	13	4	8	0.5	0.011	16
SIG6AR-N/4	06.0002	M4	6	22	36.5	13	4	8	1.2	0.012	25
SIG6AR-N/5	06.0003	M5	6	22	36.5	13	5	8	2.0	0.011	40
SIG6AR-N/6	06.0004	M6	6	22	36.5	13	5	8	3.0	0.011	75
SIG10AR-N/8	06.0006	M8	10	42.5	68.5	26	6	13	6.0	0.056	130
SIG10AR-N/10	06.0007	M10	10	42.5	68.5	26	8	13	10	0.054	180
SIG14AR-N/10	06.0009	M10	14	43	69	26	8	17	10	0.102	180
SIG14AR-N/12	06.0010	M12	14	43	69	26	10	17	16	0.099	230
SIG14AR-N/14	06.0011	M14	14	43	69	26	10	17	22	0.094	300

SIG6AR-N/3—SIG6AR-N/6



SIG10AR-N/8—SIG14AR-N/14

