

Power Splitter



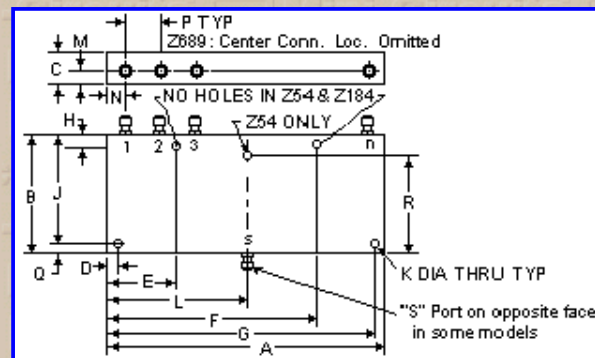
Notes:

- Non-catalog model. Please consult factory for price and delivery.
- General Quality Control Procedures and Environmental Specifications are given in [Mini-Circuits Guarantees Quality](#). Hi-Rel, MIL description are given in [Hi-Rel](#) and [MIL](#).
- Prices and Specifications subjects to change without notice.

ZB8PD-ED9989/1 8 Way-0°

Frequency MHz	Isolation, dB			Insertion Loss, dB Above 9.0dB			Phase Unbalance Degrees			Amplitude Unbalance, dB			VSWR (:1)	
	L	M	U	L	M	U	L	M	U	L	M	U	S	OUT
$f_L - f_U$	Typ.	Min.	Typ.	Typ.	Max.	Typ.	Max.	Typ.	Max.	Max.	Max.	Max.	Typ.	Max.
3500-7500	22			0.90									1.40	1.20

L=low range(f_L to $10f_L$) M=mid range($10f_L$ to $f_U/2$) U=upper range($f_U/2$ to f_U)



Case Style - Z41 (inch,mm) weight: 800 grams.

A	B	C	D	E	F	G	H	J
7.06	3.13	.88	.250	1.750	5.310	6.810	.250	2.875
179.324	79.502	22.352	6.350	44.450	134.874	172.974	6.350	73.025
K	L	M	N	P	Q	R	S	T
.144	3.53	.44	.415	.89				
3.658	89.662	11.176	10.541	22.606				

Tolerance: .x ± .1 .xx ± .03 .xxx ± .015 inch.

Material and Finish:

Case material: aluminum alloy. Finish: grey paint or yellow iridite.

Connectors:

Connectors: Please specify; Type N or SMA.

FREQ (MHz)	Insertion Loss						Amplitude Unbalance (dB)	Isolation				Phase Unbalance (Degrees)	FREQ (MHz)	VSWR S	VSWR 1	VSWR 8
	(dB) S-1	(dB) S-2	(dB) S-3	(dB) S-4	(dB) S-6	(dB) S-8		(dB) 1-2	(dB) 2-3	(dB) 3-4	(dB) 6-7					
3500.00	9.76	9.79	9.83	9.71	9.81	9.73	0.130	24.76	27.09	25.23	27.35	1.40	3500.00	1.62	1.16	1.16
3600.00	9.88	9.91	9.90	9.83	9.90	9.85	0.070	22.22	28.33	22.50	28.61	1.02	3600.00	1.72	1.21	1.21
3700.00	9.96	10.01	9.98	9.89	9.98	9.92	0.130	21.06	29.24	21.26	29.45	1.21	3700.00	1.77	1.24	1.24
3800.00	10.00	10.00	10.02	9.95	9.99	9.93	0.080	20.85	29.42	21.12	29.32	1.10	3800.00	1.75	1.26	1.26
3900.00	9.96	10.03	9.99	9.93	9.95	9.89	0.130	21.38	28.86	21.87	28.72	1.34	3900.00	1.65	1.25	1.25
4000.00	9.69	9.73	9.78	9.70	9.72	9.66	0.120	22.26	27.97	23.05	27.77	1.68	4000.00	1.50	1.23	1.23
4100.00	9.70	9.75	9.80	9.73	9.75	9.68	0.120	23.44	27.39	24.09	27.22	1.28	4100.00	1.33	1.21	1.21
4200.00	9.47	9.53	9.65	9.55	9.60	9.46	0.190	23.04	26.94	23.54	26.76	1.55	4200.00	1.15	1.19	1.19
4300.00	9.67	9.75	9.91	9.82	9.87	9.66	0.250	21.85	27.22	22.37	27.01	1.31	4300.00	1.10	1.19	1.19
4400.00	9.71	9.86	9.95	9.91	9.95	9.69	0.260	20.50	27.55	21.06	27.38	1.52	4400.00	1.22	1.22	1.21
4500.00	9.88	10.01	10.06	10.01	10.10	9.85	0.250	19.86	28.29	20.25	28.08	1.93	4500.00	1.30	1.24	1.24
4600.00	9.92	9.98	10.14	9.93	10.11	9.85	0.290	19.79	29.81	19.99	29.61	1.65	4600.00	1.34	1.27	1.27
4700.00	9.99	10.03	10.29	9.94	10.20	9.90	0.390	20.59	31.81	20.62	31.38	1.32	4700.00	1.34	1.29	1.29
4800.00	9.93	10.08	10.26	9.90	10.23	9.86	0.400	22.16	32.92	21.90	32.19	1.07	4800.00	1.35	1.28	1.28
4900.00	9.91	10.09	10.25	9.83	10.22	9.85	0.420	24.74	33.23	24.18	32.41	0.90	4900.00	1.38	1.25	1.25
5000.00	9.98	10.20	10.39	9.91	10.31	9.88	0.510	28.69	31.68	27.47	31.18	0.83	5000.00	1.42	1.20	1.20
5100.00	9.82	10.05	10.23	9.80	10.25	9.74	0.510	29.34	28.88	28.33	28.49	1.27	5100.00	1.46	1.13	1.13
5200.00	9.90	10.10	10.27	9.86	10.32	9.82	0.500	26.00	26.87	25.82	26.37	1.64	5200.00	1.48	1.08	1.08
5300.00	9.83	10.01	10.12	9.76	10.12	9.75	0.370	23.50	25.17	23.60	24.79	1.68	5300.00	1.45	1.04	1.05
5400.00	9.75	9.93	10.01	9.69	9.95	9.68	0.330	22.17	24.19	22.52	23.89	1.58	5400.00	1.37	1.02	1.02
5500.00	9.73	9.90	9.94	9.68	9.86	9.67	0.280	21.31	23.70	22.02	23.43	1.56	5500.00	1.29	1.02	1.02
5600.00	9.69	9.81	9.82	9.60	9.74	9.59	0.230	20.77	23.05	21.63	22.78	1.53	5600.00	1.24	1.01	1.01
5700.00	9.74	9.82	9.81	9.65	9.75	9.61	0.220	20.90	22.48	21.75	22.21	1.34	5700.00	1.24	1.01	1.01
5800.00	9.74	9.80	9.75	9.67	9.75	9.58	0.220	21.60	22.05	22.20	21.91	1.41	5800.00	1.22	1.05	1.05
5900.00	9.77	9.80	9.75	9.73	9.77	9.63	0.170	22.16	21.97	21.97	21.81	1.59	5900.00	1.15	1.11	1.11
6000.00	9.78	9.84	9.77	9.79	9.71	9.63	0.210	21.06	22.08	20.39	22.10	1.93	6000.00	1.07	1.18	1.18
6100.00	9.85	9.83	9.78	9.90	9.71	9.72	0.200	18.89	22.69	18.21	22.78	2.27	6100.00	1.17	1.24	1.24
6200.00	10.15	10.12	10.05	10.21	9.94	10.01	0.270	16.95	24.06	16.51	24.09	2.23	6200.00	1.33	1.27	1.28
6300.00	10.19	10.18	10.09	10.31	9.95	10.04	0.360	15.35	25.67	15.20	25.72	2.25	6300.00	1.49	1.25	1.25
6400.00	10.44	10.48	10.35	10.64	10.18	10.26	0.460	14.76	28.54	14.72	28.52	2.40	6400.00	1.62	1.19	1.19
6500.00	10.36	10.47	10.31	10.73	10.19	10.26	0.540	14.62	32.50	14.66	32.23	2.77	6500.00	1.65	1.11	1.11
6600.00	10.33	10.41	10.25	10.69	10.09	10.19	0.590	15.26	36.86	15.29	35.13	2.62	6600.00	1.54	1.10	1.10
6700.00	10.15	10.27	10.09	10.50	9.96	10.04	0.540	16.57	33.34	16.50	32.58	2.42	6700.00	1.36	1.18	1.18
6800.00	9.88	9.99	9.84	10.18	9.71	9.77	0.480	18.37	28.82	18.18	28.58	2.60	6800.00	1.16	1.23	1.23
6900.00	9.89	10.08	9.95	10.16	9.83	9.76	0.400	20.46	26.04	20.42	26.06	2.79	6900.00	1.04	1.27	1.27
7000.00	9.63	9.81	9.76	9.88	9.73	9.61	0.260	20.76	24.11	21.46	24.09	3.13	7000.00	1.21	1.30	1.30
7100.00	10.05	10.21	10.24	10.19	10.19	9.97	0.270	20.04	23.50	21.06	23.34	3.41	7100.00	1.36	1.37	1.38
7200.00	9.88	9.98	10.06	9.92	10.12	9.95	0.250	18.55	22.54	19.07	22.45	3.66	7200.00	1.46	1.51	1.51
7300.00	10.29	10.31	10.41	10.15	10.51	10.35	0.420	17.92	22.52	17.96	22.23	3.85	7300.00	1.50	1.55	1.55
7400.00	10.33	10.25	10.32	9.91	10.48	10.47	0.570	17.41	22.49	17.21	22.27	3.80	7400.00	1.49	1.50	1.50
7500.00	10.24	10.07	10.08	9.68	10.33	10.57	0.890	17.18	22.92	17.01	22.61	3.17	7500.00	1.44	1.41	1.41



INTERNET <http://www.minicircuits.com>

P.O.Box 350166, Brooklyn, New York 11235-0003 (718) 934-4500 Fax (718) 332-4661

Distribution Centers NORTH AMERICA 800-654-7949 • 417-335-5935 • Fax 417-335-5945 • EUROPE • 44-1252-832600 • Fax 44-1252-837010

ISO 9001 CERTIFIED

[Back](#)

i2 Technologies US, Inc.

HTML Pages converted to PDF Document

This document contain component information from the manufacturer's website which are not available in a revision controlled document from the manufacturer. To facilitate the addition of these parts into the Electronics Database, we are converting the HTML pages related to that part, from the manufacturer's website into Adobe PDF format. The contents of this document is based on the information provided on the manufacturer's website, therefore the information may have been changed by the manufacturer since this was created.

