

SPECIFICATIONS

Mechanical

Contact Mating Force: 75gf min., 120gf max.
Contact Unmating Force: 46gf min., 77gf max.
Durability: 1000 Cycles

Electrical

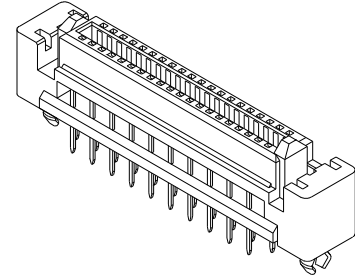
Current Rating: 0.5A max.
Contact Resistance: 40mW max.
Contact Retention Force: 0.20 kg min.
Insulation Resistance: 50MW min. (Initial)
Dielectric Withstanding Voltage: 650 V AC RMS

Physical

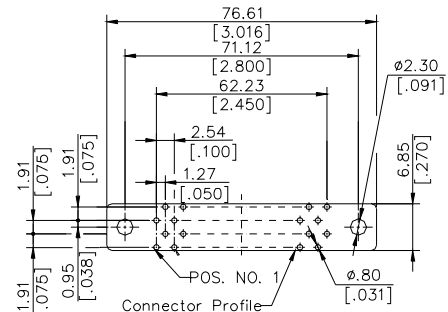
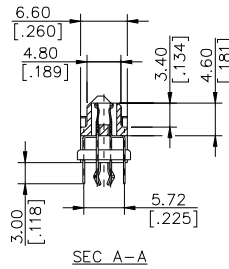
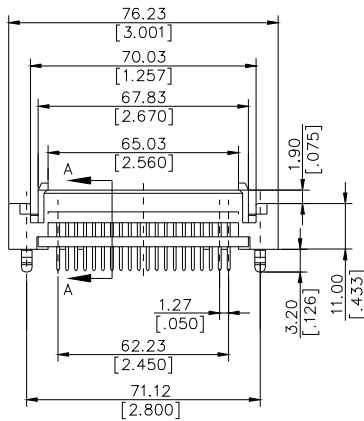
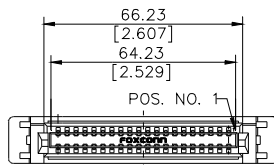
Housing: LCP, UL 94V-0 rated in Black Color
Contact: Phosphor Bronze
Operating Temperature: -55°C to +85°C

Phoenix connector

QF* Series
SMT Type
1.27 mm [0.050"] Pitch



DRAWING



RECOMMENDED P.C.B. LAYOUT

ORDERING INFORMATION

PRODUCT NO.: QF 0 1 50 1-B0

