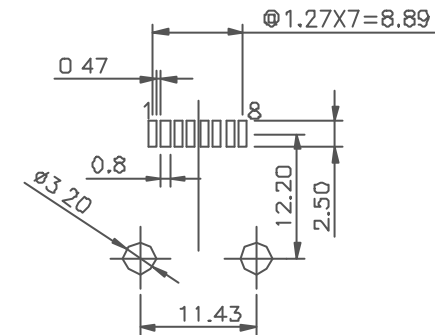
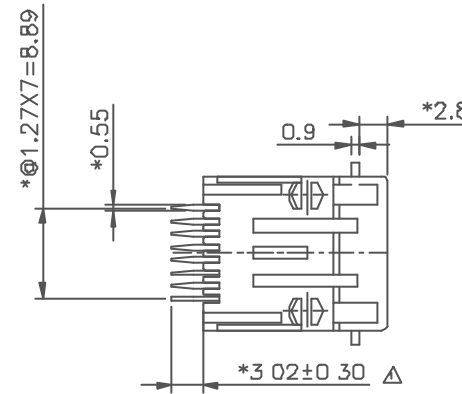
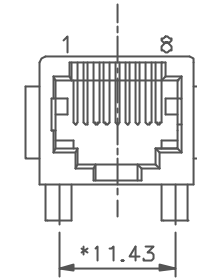
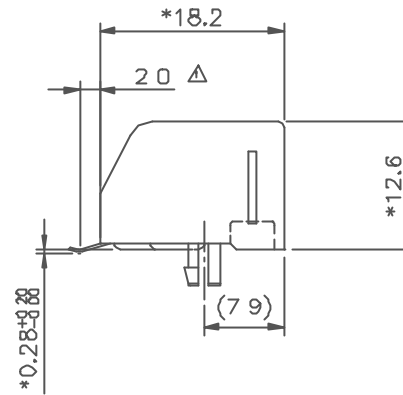
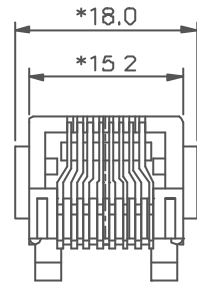


REVISION RECORD				
REV	ECO	DESCRIPTION	DRFT	CHKD
△		MODIFIED DRW.	SK 7/19/02	
△		ADD PART NUMBER	LCY 10/20/03	



PC Board Layout
Component Side Shown

NOTES:

ELECTRICAL:

- VOLTAGE RATING : 125 VAC RMS.
- CURRENT RATING : 1.5 AMP.
- CONTACT RESISTANCE : 35 MILLIOHMS MAX
- INSULATION RESISTANCE: 1000 MEGOHMS MIN @ 500 VDC.
- DIELECTRIC STRENGTH : 1000 VAC RMS 60Hz, 1MIN.

MECHANICAL:

- HOUSING MATERIAL : PBT+30%GF UL94V-0.
- CONTACT MATERIAL : PHOSPHOR BRONZE t=0.35mm
- PLATING : 1: CONTACT AREA- SELECTIVE GOLD PLATING.
2: TAILS- 150u" TIN-LEAD MIN OVER 50u" NICKEL
- OPERATING LIFE : 750 CYCLES MIN.
- PCB RETENTION PRE-SOLDER : 1 LB MIN.
- PCB RETENTION POST-SOLDER: 10 LBS MIN.

ENVIRONMENTAL:

- STORAGE : -40°C TO +85°C.
- OPERATION: 0°C TO 70°C.

MATES WITH MODULAR PLUG CONFORMING TO
FCC PART 68, SUBPART F.

CUL FILE NO. E163191
PART NUMBER: E6288-0B0XXX

- 2-A06-0080(PBT3D%)
- 3-A05-0040(FR50)
- 4-A05-0180(FR52)
- 1-3u" 2-6u"
- 3-15u" 4-30u"
- 5-50u"
- 1-W/ PANEL STOP △
- 2-W/O PANEL STOP

DIMENSIONS LIST	MM (INCH)	DFTD SANDY	DATE 1/05/01
	TOLERANCES EXCEPT AS NOTED	CHKD YICUN	DATE 10/30/02
		MFD	DATE
		APPVLCZH	DATE 10/30/02
	±	QTY :	
	±	FINISH	
	±	SCALE : 2:1	
THIRD ANGLE PROJECTION			

FULL RISE ELECTRONIC CO., LTD			
TITLE SIDE ENTRY PCB JACK 8P8C SMT AAS'Y			
DRAWING NO. GE623004		SIZE	REV
/PART NO. SEE NOTE		A3	2
DO NOT SCALE DRAWING		SHEET X	OF Y