

REV. K

\* CUT TO 'A' DIM.

SERIES	POS.	USE CARRIER	"A"	"B"
-3	14	ALC-324	.650 [16.51] (REF)	.300 [7.62]
	16	ALC-316	.750 [19.05] (REF)	.300 [7.62]
	18	ALC-320*	.850±.005 [21.59±.005]	.300 [7.62]
	20	ALC-320	.950 [12.70] (REF)	.300 [7.62]
-6	24	ALC-324	1.150 [29.21] (REF)	.300 [7.62]
	24	ALC-640	1.175±.010 [29.85±.25]	.600 [15.24]
	28	ALC-640	1.375 [34.93] (REF)	.600 [15.24]
	32	ALC-640	1.575±.010 [40.02±.25]	.600 [15.24]
	40	ALC-640	1.975 [50.17] (REF)	.600 [15.24]

UNLESS OTHERWISE NOTED

DIMENSIONS ARE IN INCHES

TOLERANCES ARE:

ONE PLACE DECIMALS: ±	THREE PLACE DECIMALS: ±	ANGLES
TWO PLACE DECIMALS: ±	FOUR PLACE DECIMALS: ±	±

TITLE: ALUMINUM DIP CARRIER

DWG NO: ALC-XXX-XXXX-X

SHEET 1 OF 1

ALC-XXX-XXXX-X

ROW SPACING "B" (SEE TABLE 1)

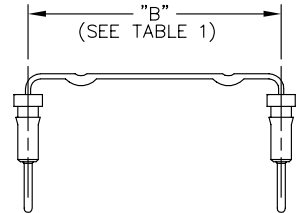
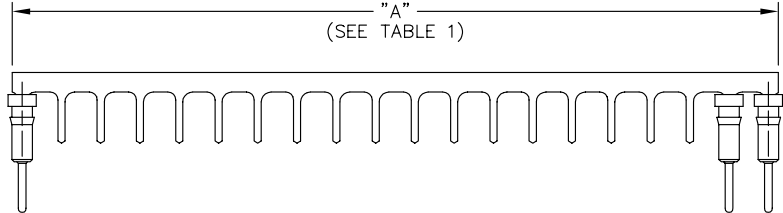
POSITION SPEC (SEE TABLE 1)

LEAD STYLE SPECIFICATION (SEE TABLE 2)

OPTION -L= LOCKING LEAD (SEE FIG 1)

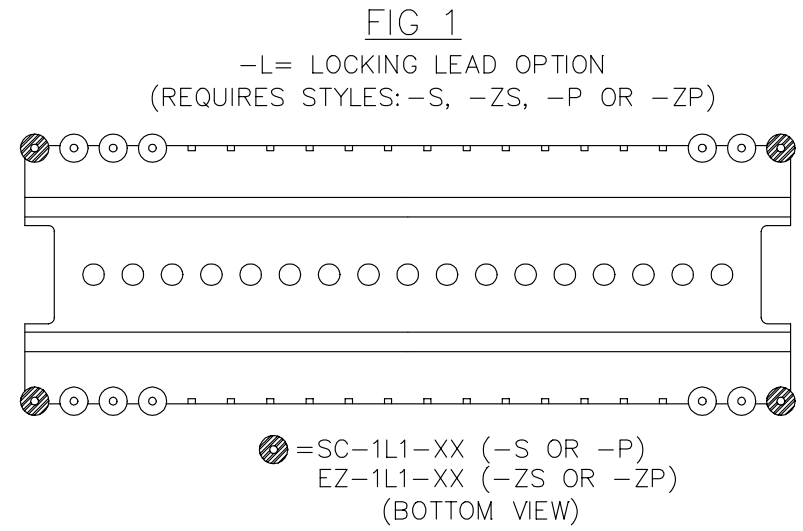
PLATING SPECIFICATION

- GG= GOLD: SPECIFY -GG IN SOCKET SUFFIX -XX
- GT= GOLD/TIN: SPECIFY -GT IN SOCKET SUFFIX -XX
- TT= TIN/TIN: SPECIFY -TT IN SOCKET SUFFIX -XX (STYLE -S, -ZS, -L, -M, -N ONLY)
- ST= SELECTIVE: SPECIFY -ST IN SOCKET SUFFIX -XX (STYLE -S & -ZS ONLY) (ON -L OPTION USE SC-1L1-GT OR EZ-1L1-GT)



NOTES:  
1.) PULL-OFF FORCE: 3 OZ. MIN.

LEAD STYLE	USE SOCKET
-B	SC-1S1-XX
-ZB	EZ-1S1-XX
-L	SC-3P1-XX
-ZL	EZ-3P1-XX
-M	SC-4P1-XX
-ZM	EZ-4P1-XX
-N	SC-5P1-XX
-ZN	EZ-5P1-XX
-P	SC-1M1-XX
-ZP	EZ-1M1-XX
-S	SC-1P1-XX
-ZS	EZ-1P1-XX
-D	SP-101-XX
-ZD	EP-101-XX



**PROPRIETARY NOTE**  
THIS DOCUMENT CONTAINS INFORMATION CONFIDENTIAL AND PROPRIETARY TO SAMTEC INC. AND SHALL NOT BE REPRODUCED OR TRANSFERRED TO OTHER DOCUMENTS OR DISCLOSED TO OTHERS OR USED FOR ANY PURPOSE OTHER THAN THAT FOR WHICH IT WAS OBTAINED WITHOUT THE EXPRESSED WRITTEN CONSENT OF SAMTEC INC.

Do not scale from this print

MISC\MKTG ALC-MKT

**samtec**

520 PARK EAST BLVD. NEW ALBANY, INDIANA 47150  
PHONE (812) 944-6733 P.O. BOX 1147  
CODE 55322

MADE BY: PURVS 9-18-86

CHECKED BY: WILLIAMS 9-24-86

ENGINEER APPROVAL TOM 9/24

ALC-XXX-XXXX-X

SHEET 1 OF 1

PLOT SCALE .25