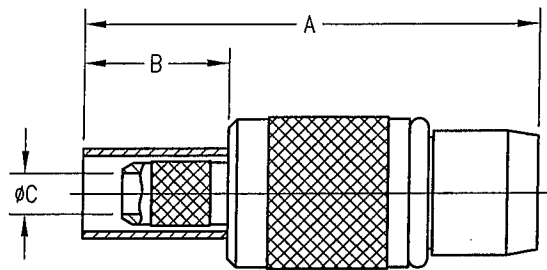


# BMA: PLUGS FOR FLEXIBLE CABLE

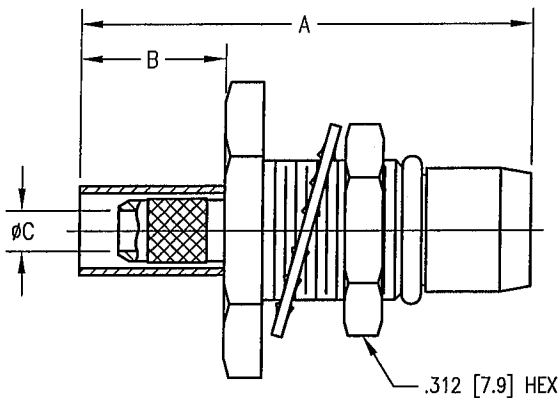
## STRAIGHT PLUG



PART NUMBER	CABLE TYPE	"A" DIM	"B" DIM	"C" DIM
360-900-0630H	RG-316	.768 [19.5]	.250 [6.35]	.069 [1.75]
360-900-0631H	RG-316 D.S.	.768 [19.5]	.250 [6.35]	.069 [1.75]
360-900-1070H	RG-195	.893 [22.7]	.375 [9.53]	.109 [2.77]
360-900-1160H	RG-58	.893 [22.7]	.375 [9.53]	.122 [3.10]
360-900-1161H	RG-142	.893 [22.7]	.375 [9.53]	.122 [3.10]

PART NUMBER SHOWN IS FOR GOLD PLATED BODY  
FOR TRI-METAL FINISH CHANGE LAST LETTER TO "R"  
FOR CABLING PROCEDURES SEE CAP 9-11

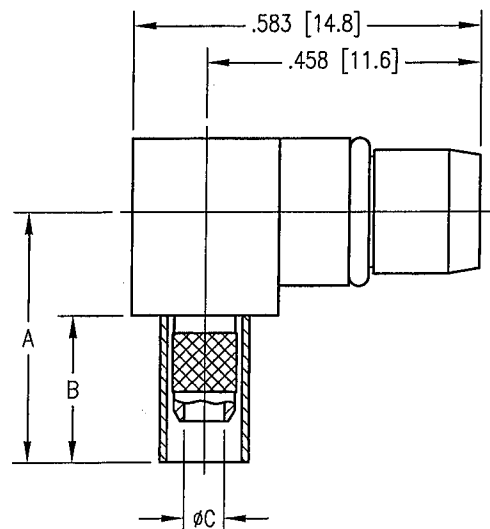
## STRAIGHT BULKHEAD PLUG (REAR MT.)



PART NUMBER	CABLE TYPE	"A" DIM	"B" DIM	"C" DIM
360-974-0630H	RG-316	.762 [19.4]	.250 [6.35]	.069 [1.75]
360-974-0631H	RG-316 D.S.	.762 [19.4]	.250 [6.35]	.069 [1.75]
360-974-1070H	RG-195	.887 [22.5]	.375 [9.53]	.109 [2.77]
360-974-1160H	RG-58	.887 [22.5]	.375 [9.53]	.122 [3.10]
360-974-1161H	RG-142	.887 [22.5]	.375 [9.53]	.122 [3.10]

PART NUMBER SHOWN IS FOR GOLD PLATED BODY  
FOR TRI-METAL FINISH CHANGE LAST LETTER TO "R"  
FOR CABLING PROCEDURES SEE CAP 9-11  
FOR RECOMMENDED MOUNTING HOLE SEE APPENDIX A, NO. 074A

## RIGHT ANGLE PLUG



PART NUMBER	CABLE TYPE	"A" DIM	"B" DIM	"C" DIM
362-900-0630H	RG-316	.425 [10.8]	.250 [6.35]	.069 [1.75]
362-900-0631H	RG-316 D.S.	.425 [10.8]	.250 [6.35]	.069 [1.75]
362-900-1070H	RG-195	.550 [14.0]	.375 [9.53]	.109 [2.77]
362-900-1160H	RG-58	.550 [14.0]	.375 [9.53]	.122 [3.10]
362-900-1161H	RG-142	.550 [14.0]	.375 [9.53]	.122 [3.10]

PART NUMBER SHOWN IS FOR GOLD PLATED BODY  
FOR TRI-METAL FINISH CHANGE LAST LETTER TO "R"  
FOR CABLING PROCEDURES SEE CAP 9-12