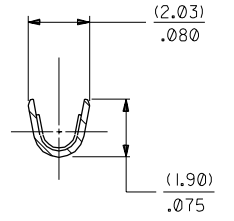
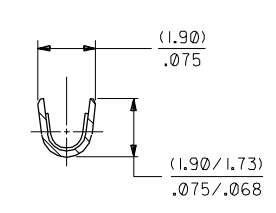
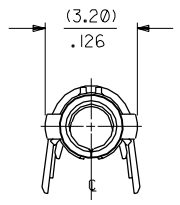
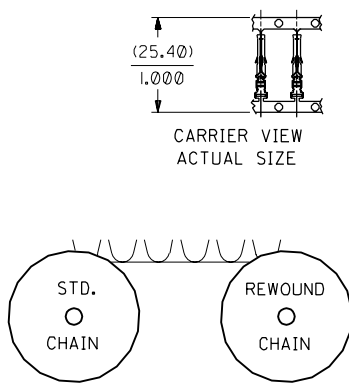


PART NO.	ENG. NO.	
02-06-1231	2189-(P90 I)	
02-06-1232	2189-(P90 I)L	
02-06-1233	2189-(P90 I)A	
02-06-5203	2189-(P59 I)	OBSOLETE
02-06-5204	2189-(P59 I)L	OBSOLETE
02-06-5212	2189-(P558)	OBSOLETE
NOT TOOLED	2189-(P558)L	



LEGEND

2189-(****)*

P=PREPLATE
BLANK=POSTPLATE

FORM
BLANK=STD. CHAIN
A= REWOUND CHAIN
L=LOOSE
FINISH CODE

NOTES:

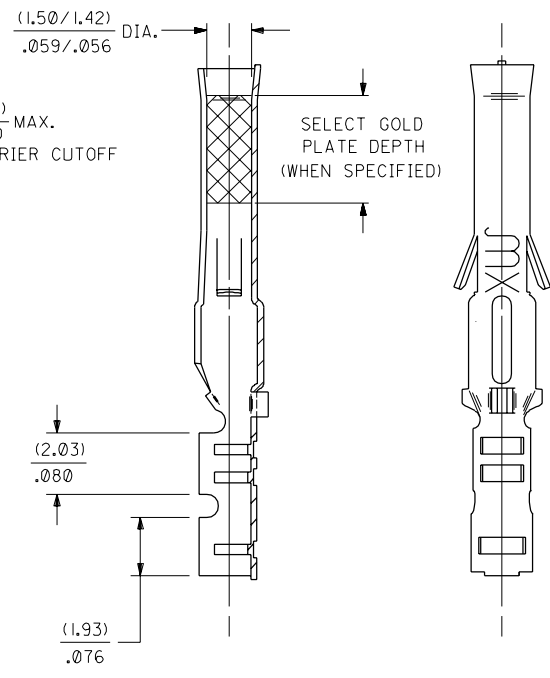
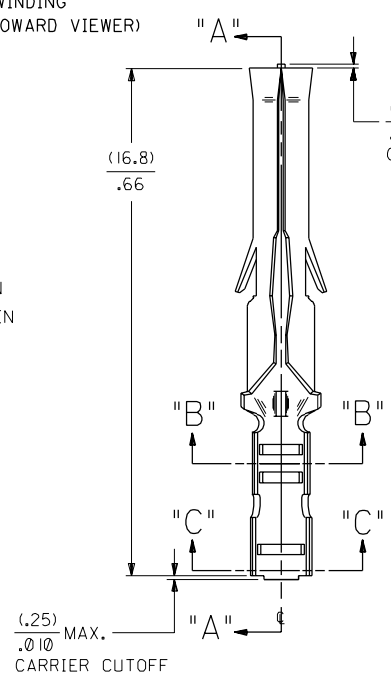
1. TERMINAL FOR USE WITH (1.57)/.062 DIA. SERIES HOUSINGS AND WILL ACCEPT 24 THRU 30 AWG WIRE WITH (1.02/2.29)/.040/.090 INSULATION DIA.
2. THIS PART CONFORMS TO PRODUCT SPEC. 02-06.

FINISH CODES:

901 HOT TIN DIP (.0005 I)/.000020 MIN.

591 SELECT GOLD PLATE (.00127)/.000050 MIN. IN CONTACT AREA, OVER (.00127)/.000050 MIN. NICKEL OVERALL WITH (.00025)/.000010 MAX. GOLD FLASH OVERALL.

558 SELECT GOLD PLATE (.00076)/.000030 MIN. IN CONTACT AREA, OVER (.00127)/.000050 MIN. NICKEL OVERALL WITH (.00025)/.000010 MAX. GOLD FLASH OVERALL.



MATERIAL NOTE:

PHOSPHOR BRONZE, ALLOY *C51000,
(.20)/.008 THICK, SPING TEMPER.

AN	I	AN	LTR.	REVISIONS
AM				
OBSOLETE P/N UCR2002-0270 COMERCI 01/10/1				
REV. AND REDRAWN PER ECR 10312 GEP 9-21-87 RW				

DIMENSIONS SHOWN (METRIC) INCH		UNLESS OTHERWISE SPECIFIED TOLERANCES: ANGULAR ± 1/2°	
3 PLACE ± .010	---	---	---
2 PLACE ± .014	± 0.25		
1 PLACE ---	± 0.35		
DRAFT WHERE APPLICABLE MUST REMAIN WITHIN DIMENSIONS			
DRWG. BY: GEP	CHK'D. BY: RW	FILE NAME: SD2189X1	THIS DRAWING CONTAINS INFORMATION THAT IS PROPRIETARY TO MOLEX INC. AND SHOULD NOT BE USED WITHOUT WRITTEN PERMISSION.
APP'D. BY: RAS	SCALE: 8 : 1	SEE CHART	SD-2189-*

TITLE		REVISE ONLY ON CAD SYSTEM	
CRIMP TERMINAL, FEMALE (1.57)/.062 DIA., PHOS. BRONZE FOR 24 THRU 30 GA. WIRE			
MOLEX INCORPORATED	SHEET NO. 1 OF 1	DATE 9/21/87	
1151E, ILL. 60532 U.S.A.			