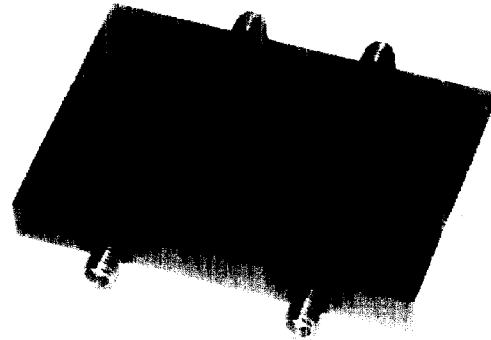
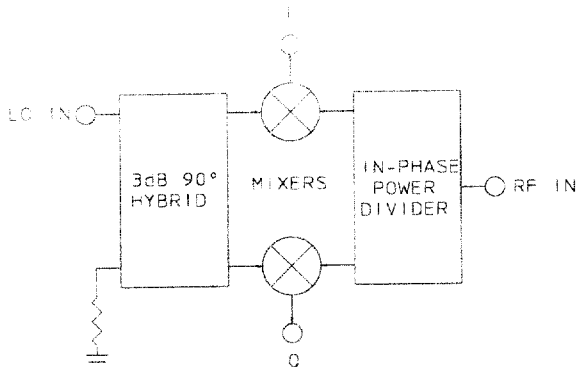


## IQM-20B Series

1.2 to 2.5 GHz / Minimum 10% Bandwidth / Excellent Phase and Amplitude Balance / SMA Package

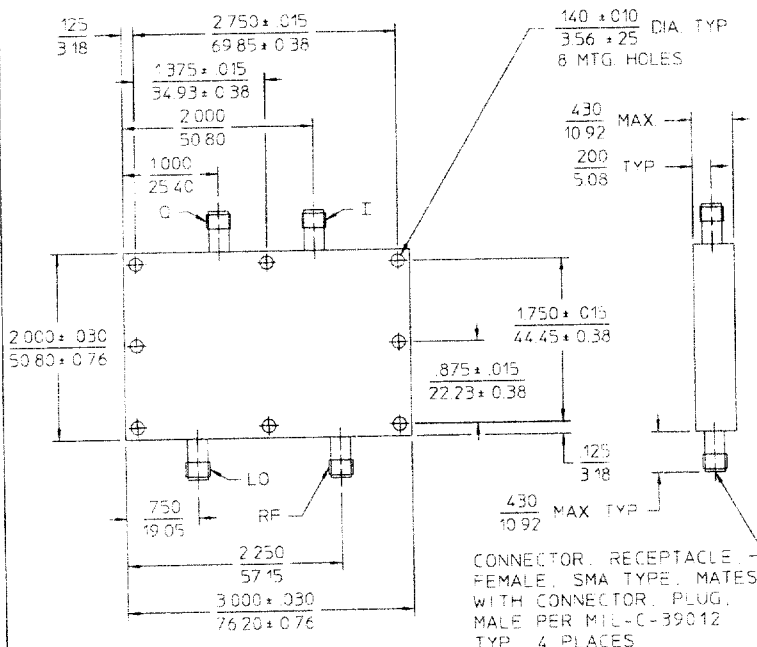


### PRINCIPAL SPECIFICATIONS

Model Number	RF/LO Center Freq., $f_0$ , GHz	RF Bandwidth	90° Phase Accuracy, 10% LO Band $LO=f_0$				Amplitude Balance, dB, 10% LO Band $LO=f_0$				Conver. Loss (RF to I or Q)	
			Typ.	Max.	Typ.	Max.	Typ.	Max.	Typ.	Max.	Typ.	Max.
IQM-20B-****B	1.2 to 2.5	10% of $f_0$	$\pm 3^\circ$	$\pm 5^\circ$	$\pm 1^\circ$	$\pm 2^\circ$	0.3	0.5	0.1	0.2	10 dB	12 dB

For complete Model Number replace \*\*\*\* with desired Center frequency,  $f_0$  in MHz

### B-Package Outline



NOTES: 1. Tolerance on 3 place decimals  $\pm$  .030(.76) except as noted.  
2. Dimensions in inches over millimeters.

### GENERAL SPECIFICATIONS

Input VSWR:	1.5:1 max.
RF Input Power Level:	0 dBm nom.
LO Input Power Level:	+10 dBm nom.
Video Bandwidth:	DC to $\dagger$ 100 MHz nom.
Weight, nominal:	3 oz (84 g)
Impedance:	50 $\Omega$ nom.
Operating Temp:	-55° to +85°C
Higher Frequencies:	See IQM-D series

$\dagger$ Video Bandwidth is typically much greater than 100 MHz

### General Notes:

1. I & Q networks are integrated networks that produce two quadrature phased, equal amplitude signals when fed RF and LO signals.
2. The IQM-2B and -20B series use both lumped element circuits and distributed circuit technologies for high performance in a proven flatpack design.
3. Merrimac I & Q Networks comply with the relevant sections of MIL-M-28837 and may be supplied screened for compliance with additional specifications for military and space applications requiring the highest reliability.