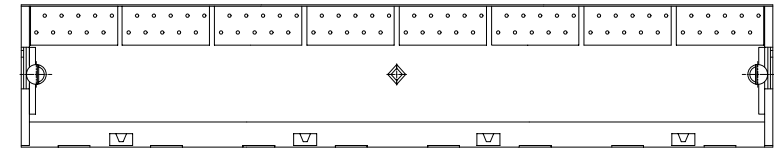
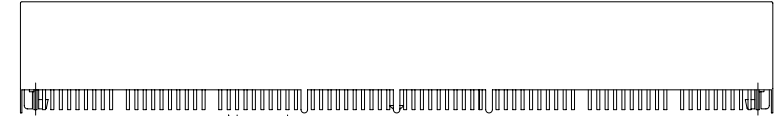
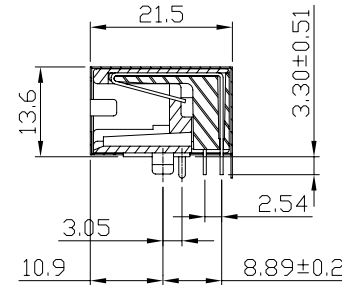
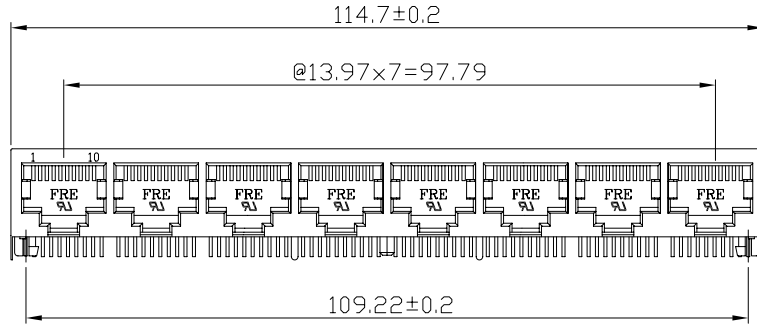


REVISION RECORD				
REV	ECD	DESCRIPTION	DRFT	CHKD
1		ADD P/N.	cy	
			07/05/05	
2		ADD P/N.	Jasper	
			12/08/05	



NOTES:

ELECTRICAL:

- VOLTAGE RATING : 125 VAC RMS.
- CURRENT RATING : 1.5 AMP.
- CONTACT RESISTANCE : 50 MILLIOHMS MAX.
- INSULATION RESISTANCE: 1000 MEGOHMS MIN @ 500 VDC.
- DIELECTRIC STRENGTH: 1000 VAC RMS 60Hz, 1MIN.

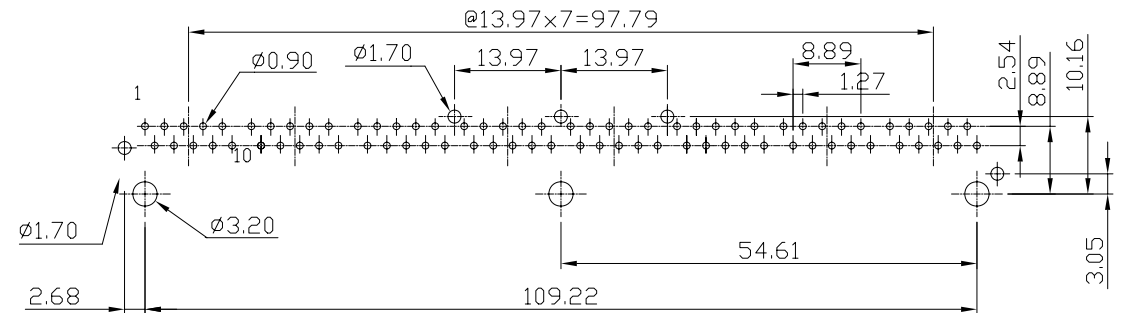
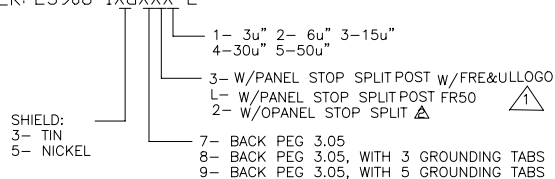
MECHANICAL:

- HOUSING MATERIAL : FR50 UL94V-0.
- CONTACT MATERIAL : PHOSPHOR BRONZE ϕ 0.46mm.
- PLATING : GOLD PLATING OVER NICKEL.
- OPERATING LIFE : 750 CYCLES MIN.
- PCB RETENTION PRE-SOLDER: 1 LB MIN.
- PCB RETENTION POST-SOLDER: 10 LBS MIN.

ENVIRONMENTAL:

- STORAGE: -40°C TO +85°C.
- OPERATION: 0°C TO 70°C.
- WAVE SOLDERING TEMPERATURE: 230°C~250°C(3~5 SECONDS)
MATES WITH MODULAR PLUG CONFORMING TO
FCC PART 68, SUBPART F.

ROHS PART NUMBER: E5908-1XGXXX-L



PC Board Layout t=1.60mm
Component Side Shown

DETACHED LISTS	MM (INCH)	DFTD JAMY	DATE 06/17/05	FULL RISE ELECTRONIC CO., LTD	
	TOLERANCES EXCEPT AS NOTED	CHKD	DATE		
	MM	MFO	DATE 12/12/05	TITLE 20.57 PCB GANG JACK (8 PORTS)	
	.0 ± 0.20 ± .00 ± 0.15 ± 000 ± 0.075 ±	APPVL oscar			
ANGLES ±	QT'Y :	DRAWING NO. GE593203-LC		SIZE A3	REV 2
THIRD ANGLE PROJECTION	FINISH:	/PART NO. SEE NOTE		DO NOT SCALE DRAWING	
	SCALE :	SHEET X		OF Y	