

DIAMOND

Fiber Optic Components

DIAMOND HFS-13

CABLE ASSEMBLIES AND ADAPTERS

MULTIMODE

SPECIFICATIONS

	MULTIMODE	UNITS	TEST CONDITIONS
Insertion Loss (IL)	typ. 0.6	dB	IEC 61300-3-4; $\lambda = 850$ nm
Return Loss (RL)	typ. 12	dB	IEC 61300-3-6; $\lambda = 850$ nm
Repeatability of IL	± 0.2	dB	Over service life
Service life	min. 1000 mate/demate cycles		
Operating temperature	-40/+85*	°C	
Storage temperature	-40/+90*	°C	
Strain relief (cable)	>200	N	(Signal interruption at 25 N)

* May be further limited by cable specifications

APPLICATIONS

- ▶ Telecommunications, LAN, MAN, WAN, Test & Measurement, Industry, Medical, Sensors

COMPATIBILITY

- ▶ With all DIAMOND connectors with $\varnothing 2.5$ mm ferrules and M9x0.5-threaded or BNC locking mechanism

DESIGN/MATERIALS

- ▶ Polish: Concave
- ▶ Ferrule: $\varnothing 2.5$ mm, spring loaded (10 N, with air pressure relief surface)
- ▶ Mating adapter: Copper-nickel alloy with rigid tungsten carbide sleeve

AVAILABLE AS

- ▶ Terminated connector
- ▶ Connector set, (to be terminated with Diamond special equipment)

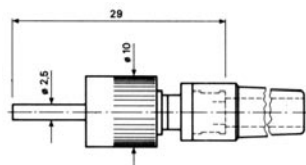
CONNECTOR TYPES AND DIMENSIONS (with threaded locking mechanism)

DIAMOND HFS-13 connectors 900 μ m boot style

Available types: **DIAMOND HFS-13 MINI**

Ferrule material: Tungsten carbide with copper-nickel alloy insert

External parts: Copper-nickel alloy



DIAMOND SA • Via dei Patrizi 5 • CH-6616 Losone
Tel. +41 91 785 45 45 • Fax +41 91 785 45 00 • e-mail info@diamond-fo.com

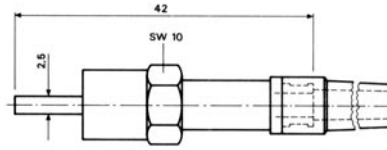
www.diamond-fo.com

Specifications subject to change without notice

BDD 1950045 015

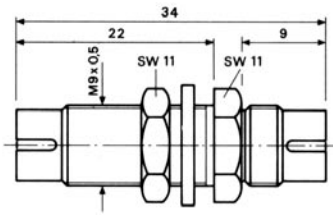
DIAMOND HFS-13 connectors 1.6 mm - 3.0 mm boot style

Available types: **DIAMOND HFS-13 /RG**



ADAPTER TYPE AND DIMENSIONS

DIAMOND MST-13 mating adapter

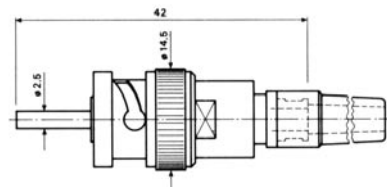


CONNECTOR TYPE AND DIMENSIONS (/B = BNC-bayonet locking mechanism)

DIAMOND HFS-13 /B (900 μ m) and /BRG (3.0 mm) connectors boot style

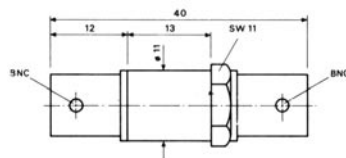
Available types: **DIAMOND HFS-13 /B**
DIAMOND HFS-13 /BRG

Ferrule material: Tungsten carbide with copper-nickel alloy insert
External parts: Copper-nickel alloy



ADAPTER TYPE AND DIMENSIONS

DIAMOND MST-13 /B mating adapter



NOTE Diamond's standard **boot** colors are as follows: Green for MM PC 50 μ m

ORDER INFORMATION

When ordering mating adapters, please refer to the part numbers provided in the enclosed P/N list.
When ordering pigtails or cable assemblies, please refer to the **connector type description** in the Available types section, and fill in the Simplex, Duplex, Multiple fiber Assemblies order form according to **those** denominations.

Other versions available upon request