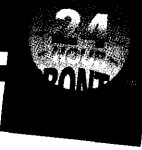
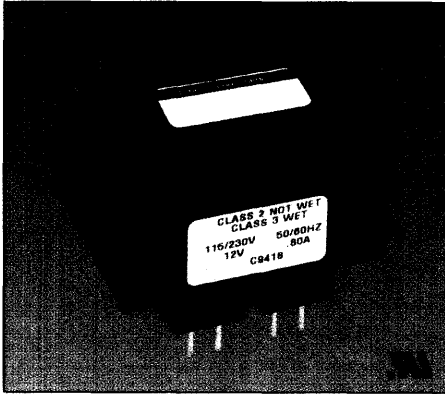


# Class 2 Transformers Printed Circuit

BUY DIRECT



## Inherently or Non-inherently Limited



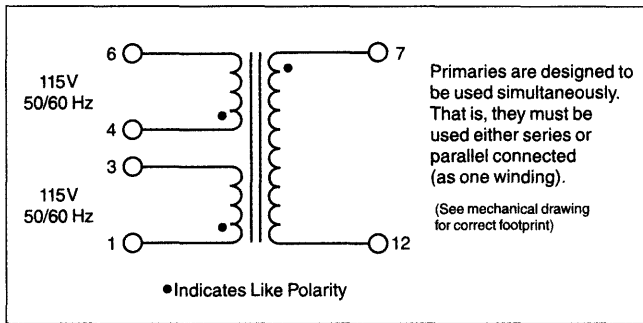
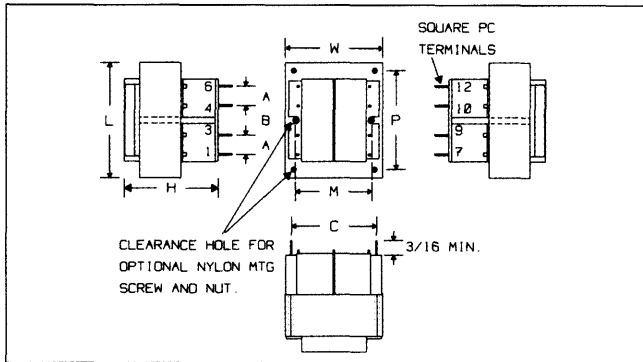
Signal's CL2 transformers are available in printed circuit and chassis mount versions. They are supplied as inherently or non-inherently limited units that are UL 1585 recognized.

### General Specifications

- Power – 2.5 VA to 50 VA
- Dielectric Strength – 4000VRMS Hipot
- Primaries – Dual primaries (115/230V - 50/60 Hz)
- Secondary – Single secondary
- Class 2 Rating – Inherently or non-inherently limited
- See secondary fuse requirements in tables below
- Electrostatic Shield – Not necessary, split or dual bobbin construction
- Insulation – Class F insulation (155°C)
- Flammability Rating – Bobbin and shroud material meet UL 94V0

### Agency Standards

- UL recognized to UL 1585 Class 2 (File #E116583)



Part No.	Secondary RMS Rating	Secondary Fuse Req'd.
CL2-2.5-12	12V @ .20A	N/A*
CL2-2.5-24	24V @ .10A	N/A*
CL2-5.0-12	12V @ .42A	N/A*
CL2-5.0-24	24V @ .20A	N/A*
CL2-10-12	12V @ .83A	N/A*
CL2-10-24	24V @ .42A	N/A*
CL2-20-12	12V @ 1.66A	N/A*
CL2-20-24	24V @ .833A	N/A*
CL2-30-12	12V @ 2.50A	3.0A**
CL2-30-24	24V @ 1.25A	N/A*
CL2-50-12	12V @ 4.20A	5.0A**
CL2-50-24	24V @ 2.10A	2.5A**

\* Inherently limited  
 \*\* Non-inherently limited  
 Maximum secondary fuse value specified  
 All primaries are 115/230 volt 50/60 Hz

VA (Size)	Dimensions						Sq. Pin Dimension	Mtg. Dim.			Mtg. Screw		Wgt
	L	W	H	A	B	C		M	N	P	Size	Qty	
2.5	1.62" 41.3mm	1.31" 33.3mm	1.12" 28.6mm	.200" 5.1mm	.250" 6.4mm	1.000" 25.4mm	0.025" 0.64mm	1.06" 26.9mm	-	-	#4	2	0.25 lbs 0.11 kg
5.0	1.62" 41.3mm	1.31" 33.3mm	1.37" 34.9mm	.200" 5.1mm	.400" 10.2mm	1.000" 25.4mm	0.025" 0.64mm	1.06" 26.9mm	-	-	#4	2	0.37 lbs 0.17 kg
10.0	1.87" 47.6mm	1.56" 39.7mm	1.37" 34.9mm	.200" 5.1mm	.400" 10.2mm	1.140" 29.0mm	0.038" 0.97mm	1.25" 31.8mm	-	-	#4	2	0.53 lbs 0.24 kg
20.0	2.25" 57.2mm	1.87" 47.6mm	1.62" 41.3mm	.400" 10.2mm	.400" 10.2mm	1.460" 37.1mm	0.038" 0.97mm	1.50" 38.1mm	-	-	#4	2	0.90 lbs 0.41 kg
30.0	2.62" 66.7mm	2.18" 55.5mm	1.56" 39.7mm	.550" 14.0mm	.275" 7.0mm	1.680" 42.7mm	0.405" 1.14mm	-	1.75" 44.5mm	2.18" 55.5mm	#6	4	1.15 lbs 0.52 kg
50.0	3.00" 76.2mm	2.50" 63.5mm	1.81" 46.0mm	.600" 15.2mm	.300" 7.6mm	1.900" 48.3mm	0.405" 1.14mm	-	2.00" 50.8mm	2.50" 63.5mm	#6	4	1.70 lbs 0.77 kg

If you don't see a specific part that meets your requirement, see page 31 for our custom magnetics design data sheet.



CALL: 516-239-5777 • FAX: (24hrs) 516-239-7208

500 Bayview Avenue, Inwood, New York 11096