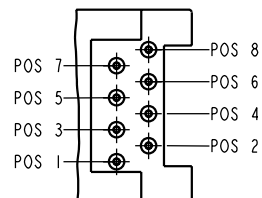
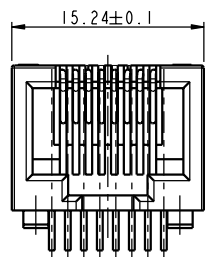


PRODUCT NUMBER	LOADED POSITION
55664-X88	ALL POSITION
55664-X86	2, 3, 4, 5, 6, 7
55664-X84	3, 4, 5, 6
55664-X84A	1, 4, 5, 8
55664-X84B	1, 2, 3, 6
55664-X84C	1, 2, 7, 8

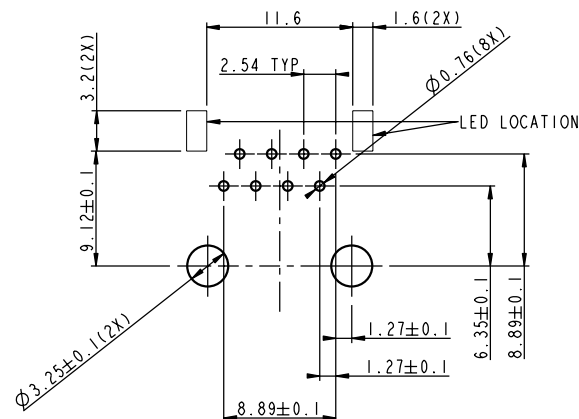
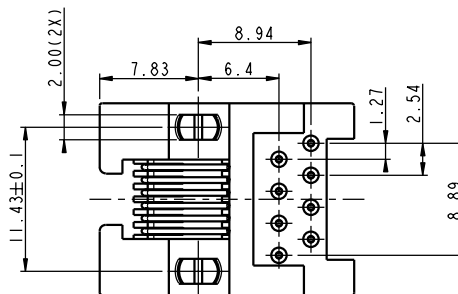
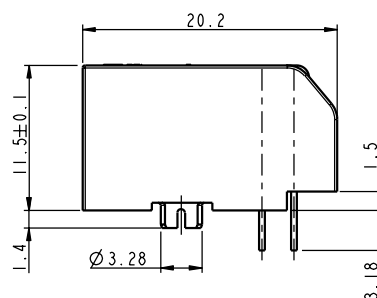
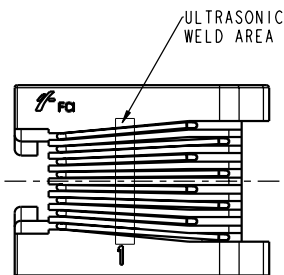


SCALE 2.500

PLATING CODE X	PLATING
0	30u" G.X.T.
1	15u" AU
2	20u" GFDP
3	30u" AU
4	15u" G.X.T.
5	50u" AU
6	6u" AU
7	2u" AU

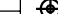



SCALE 2.500



RECOMMENDED PCB LAYOUT
SCALE 2.500

NOTE:
1. RECOMMENDED PCB THICKNESS 1.6 MM
2. HOUSING MAT'L: PC, UL94V-2
3. CONTACTS: PHOS BRONZE ALLOY UNS-C51000, 0.460 DIA. ROUND WIRE. PLATING SEE TABLE
4. LED: DE-58, LXWXH=3.2X1.6X1.1MM.

mat'l code				tolerance unless otherwise specified		CUSTOMER COPY		FCI ELECTRONICS	
rev.	ecn no.	dr	date	linear			title	product family	MOD JACK code
A	T10221	C C	08/10/01	angles					
		dr		CAESAR CHEN	10/03/00	unit		A3	55664
		enrg		CAESAR CHEN	10/03/00	size			
		chr		CAESAR CHEN	10/03/00	scale			
		appd		CAESAR CHEN	10/03/00				
sheet index	revision	sheet	A						
			1						