

RED INDICATES ORIGINAL

DATA CONTAINED IN THIS DOCUMENT IS PROPRIETARY TO TROMPETER ELECTRONICS INC. AND SHALL NOT BE DISCLOSED, COPIED OR USED FOR PROCUREMENT OR MANUFACTURE WITHOUT EXPRESS WRITTEN PERMISSION.

REVISIONS

| | | | | | |
|-----|----|--------------------|-----|----------|------|
| REV | ED | DESCRIPTION | DWN | APPROVED | DATE |
| A | | PRODUCTION RELEASE | R | L | |

305-1352

SH 1C

| DASH NO | CONNECTOR TYPE | MATERIAL ⁴ | ASSEMBLE PER | FIG | MTG HOLE FIG |
|---------|----------------|-----------------------|--------------|-----|--------------|
| -1 | PL75 | 310-0002-42 | TAI-189 | 1A | — |
| -2 | CJ70 | 3-0043-42 | | 2A | — |
| -3 | BJ79 | 3-0018-42 | | 3A | 10 |
| -4 | BJ74 | 3-0055-42 | | 4A | 11 |
| -5(S) | PL375(S) | 315-0011-42 | | 1B | — |
| -6(S) | CJ370(S) | 3-0066-42 | | 2B | — |
| -7(S) | BJ379(S) | 3-0074-42 | | 3B | 10 |
| -8(S) | BJ374(S) | 3-0073-42 | | 4B | 11 |
| -9 | PL74 | 310-0025-42 | | 5A | — |
| -10 | CJ70TL | 3-0217-42 | | 6A | — |
| -11 | BJ79TL | 3-0112-42 | | 7A | 10 |
| -12 | BJ74TL | 3-0105-42 | | 8A | 11 |
| -13 | PL75FL | 310-0006-42 | | 5B | — |
| -14 | CJ70FL | 3-0101-42 | | 6B | — |
| -15 | BJ79FL | 3-0052-42 | | 7B | 10 |
| -16 | BJ74FL | 3-0099-42 | | 8B | 11 |
| -17 | PL73 | 310-0038-42 | | 9 | — |

FIG 1

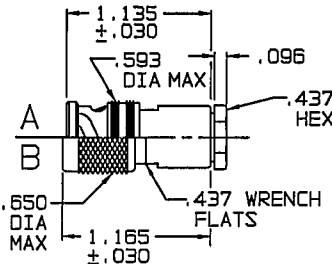


FIG 2

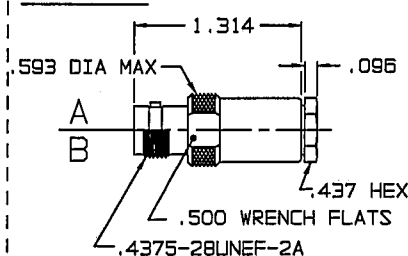


FIG 3

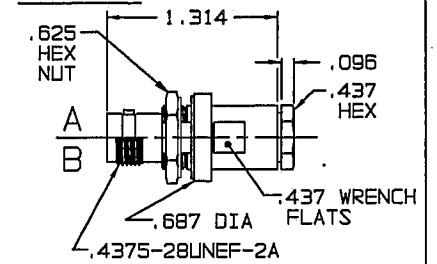


FIG 4

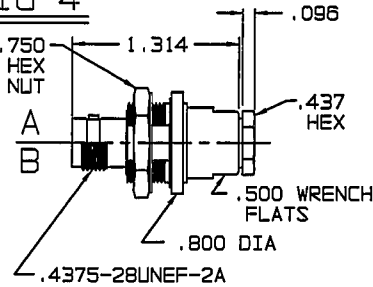


FIG 5

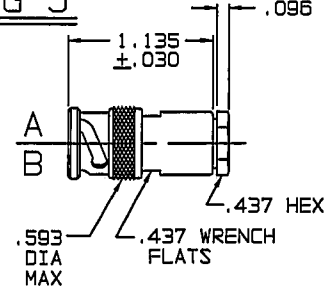


FIG 6

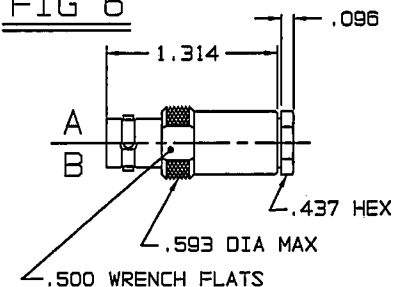
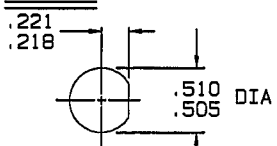
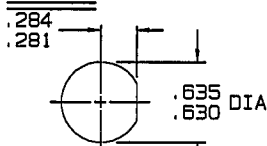


FIG 10



**RECOMMENDED
PANEL CUTOUT**
MAX PNL THK .109

FIG 11



**RECOMMENDED
PANEL CUTOUT**
MAX PNL THK .140

5. EXAMPLE OF COMPLETE P/N:

305-XXXX-1 T S

BASIC PART NO. CONNECTOR TYPE DASH NO. OPTIONAL SAFETY WIRE HOLE (-5 THRU -8 ONLY) SEE NOTE ⁴

⁴ REPLACE CLAMP NUT ASSY 8-1580-42 WITH 8-1580-9

3. CONCENTRIC TWINAX/TRIAX, 2-LUG, 3-LUG, 4-LUG AND THREADED CABLE PLUGS/RECEPTACLES, INSULATED & NONINSULATED BULKHEAD MOUNT RECEPTACLES & PUSH-ON CABLE PLUGS FOR RAYCHEM 7522A5811

2. FINISH TFS-1A (NICKEL)

1. ALL DIM ARE IN INCHES

³ POLARIZATION LETTER I.A.W MATERIAL CALL-OUT. NONE REQUIRED FOR STANDARD

FIG 7

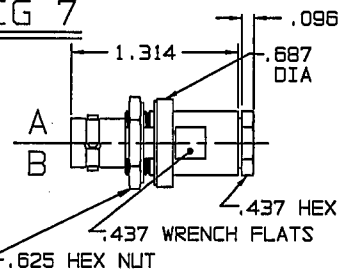


FIG 8

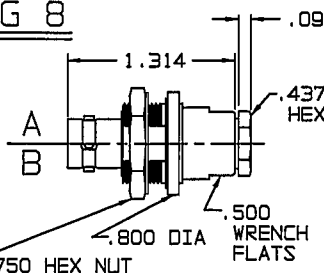
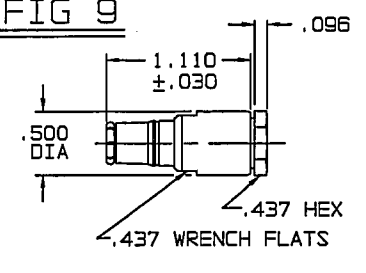


FIG 9



| QTY | DESCRIPTION | PART NUMBER | ITEM |
|----------------------|------------------------------------|--------------|-------------|
| TOL UNLESS SPECIFIED | TROMPETER ELECTRONICS, INC. | | |
| .XX ± | | | |
| .XXX ± .005 | MATERIAL | CODE IDENT | DRAWING NO. |
| .XXX ± | | 14949 | 305-1352 |
| ANGLE ± | SCALE — | DATE 7/21/99 | SHEET 1C |
| DWN R L 7/21/99 | APPR | ENGR | REV A |