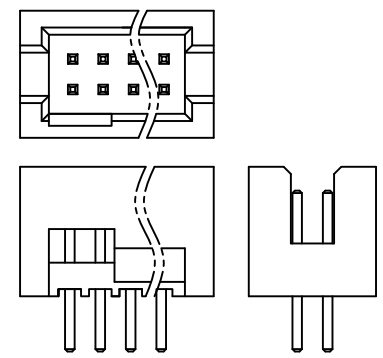
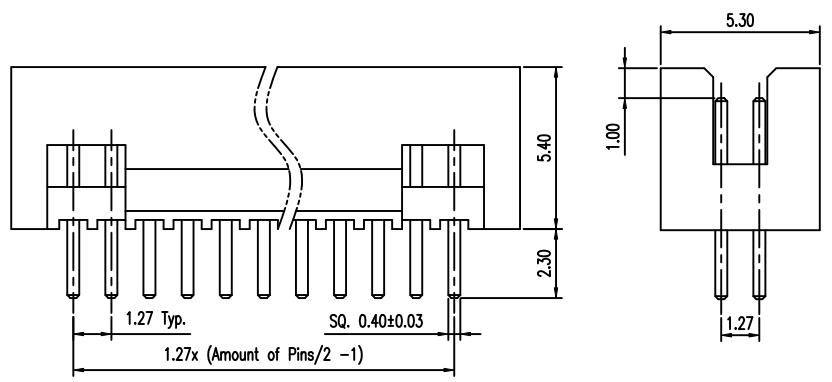
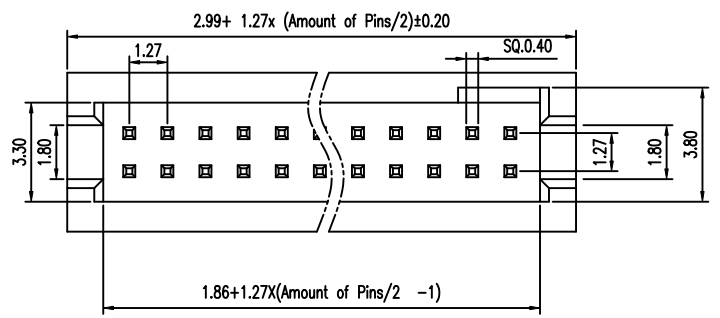


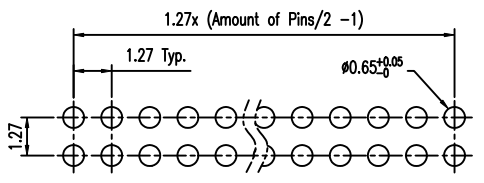
Tous droits strictement réservés. Reproduction ou communication a des tiers interdite sous quelque forme que ce soit sans autorisation écrite du propriétaire. Propriete de c FCI. Droits de reproduction FCI.



All rights strictly reserved. Reproduction or issue to third parties in any form whatever is not permitted without written authority from the proprietor. Property of FCI. Copyright FCI.



APPEARANCE OF 6, 8 POS.



Recommended P.C.B. Layout
Layout Tolerance = ± 0.05 mm

NOTE:

- MATERIAL,
HOUSING: HIGH TEMP PLASTIC, UL94-V0, BLACK
TERMINAL: COPPER ALLOY, SQ=0.40±0.03mm
- FINISH:
TERMINAL: GOLD AT CONTACT,
G/F OVER 1um(40u")MIN Ni OVER ALL
- SPEC.:
PRODUCT SPEC: GS-12-629
PACKING SPEC: GS-14-1420
- THE HSG. WILL WITHSTAND EXPOSURE TO 260C PEAK TEMP. FOR 10 SEC. IN A WAVE SOLDER APPLICATION WITH A PCB.
- PRODUCT NUMBERING:
20021211 - 0 0 0 XX X X LF

LEAD FREE
PLATING:
1: GOLD FLASH, ALL OVER
4: 0.25um(10U")GOLD AT CONTACT
8: 0.76um(30U")GOLD AT CONTACT
PACKING
T: TUBE

PIN COUNT
06,08,10,...98,A0
(6 -100 EVERY EVEN PIN)
EXCEPT 22,24,28,32,36,38,42,46,48,52,54,56,58,62,72 TO 96 POS.

mat'l. code				tolerances unless otherwise specified		CUSTOMER COPY	FCI www.fciconnect.com	
ltr	ecn no	dr	date	linear	.X ± 0.38	projection	title	
A	T09-1117	S.LIN	09/15/09		.XX ± 0.25		1.27X1.27MM BTB HEADER SHROUDED, VERTICAL ,TH	
B	T10-0015	S.LIN	01/21/10	angles	.XXX ± 0.10	MM	product family 585	
				0° ± 2°	0° ± 2°		code TWN	
				dr	STERLING LIN	09/15/09	size dwg no	
				engr	STERLING LIN	09/15/09	sheet 1 of 1	
				chr	GARY HSIEH	09/15/09	scale NA	
				appd	JOSEPH HSIA	09/15/09	A4 20021211	
sheet index	revision sheet	B 1					cage code	