

KBT...BV/...



**Sockets KBT...BV/... with bayonet locking and crimp sleeve**

KBT...BV/... are spring-loaded sockets with locking feature and are for crimping onto highly flexible copper conductor with cross sections of 50 mm<sup>2</sup> to 400 mm<sup>2</sup>. Used with a panel receptacle it acts as an appliance coupler and with a plug as a connecting coupler. Color marking is accomplished with pressure-sensitive tape.

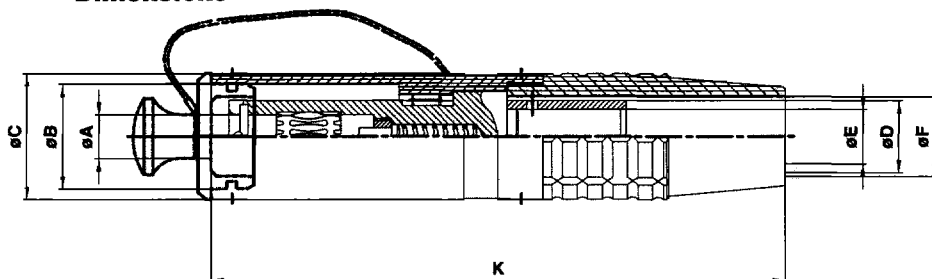
Protective caps see page 410.

Available as individual parts.

**Notice:** The 16 mm dia. version is no longer available. Please see new replacement part KBT16BV-N/... on page 398.

Type	Part #	Conductor cross-section copper mm <sup>2</sup>	Nominal dia. pin/socket mm	Withdrawal force N	Insertion force N	Weight kg	Multilam™	Rated current (80°C) A	Rated voltage <sup>2</sup> V	Contact resistance μΩ	Short-circuit current 1 s kA	Short-circuit current 3 s kA	Surge current kA	Test voltage 50 Hz 1 min <sup>2</sup> kV
KBT12BV/50	15.0034	50	12	40	45	0.301	LAI	200	1000	40	5.5	3.0	25	3
KBT12BV/70	15.0035	70	12	40	45	0.302	LAI	250	1000	40	7.0	5.0	25	3
KBT12BV/95	15.0036	95	12	40	45	0.301	LAI	280	1000	40	7.5	5.5	25	3
KBT22BV/150	15.0089	150	22	80	100	1.05	LAI	390	1000	10	18.0	8.0	100	3
KBT22BV/185	15.0090	185	22	80	100	1.05	LAI	450	1000	10	23.0	10.0	110	3
KBT22BV/240	15.0091	240	22	80	100	1.05	LAI	530	1000	10	29.0	18.0	110	3
KBT30BV/240	15.0054	240	30	120	130	1.5	LAI	520	1000	9	29.0	18.0	120	3
KBT30BV/300	15.0055	300	30	120	130	1.5	LAI	600	1000	9	39.0	29.0	150	3
KBT30BV/400	15.0056	400	30	120	130	1.5	LAI	750	1000	9	39.0	29.0	150	3
<b>Dimensions</b>		<b>A</b>	<b>B</b>	<b>C</b>	<b>D</b>	<b>E</b>		<b>F</b>	<b>K</b>					
KBT12BV/50	15.0034	12	29	35	14.5	11		15.5	159					
KBT12BV/70	15.0035	12	29	35	17	13		19	159					
KBT12BV/95	15.0036	12	29	35	20	15		22	159					
KBT22BV/150	15.0089	22	48	55	25	19		32	221					
KBT22BV/185	15.0090	22	48	55	27	21		35	221					
KBT22BV/240	15.0091	22	48	55	30	24		38.5	221					
KBT30BV/240	15.0054	30	60	69	30	24		35	261					
KBT30BV/300	15.0055	30	60	69	32	26		38	261					
KBT30BV/400	15.0056	30	60	69	36	30		43	261					

**Dimensions**



Colors: 20 - 29 Please specify

2) In mated condition only.

20 - green/yellow 21 - black 22 - red 23 - blue 24 - yellow 25 - green 26 - violet 27 - brown 28 - gray 29 - white 33 - transparent

**Plugs KST...BV/... with bayonet locking and crimp sleeve**

KST...BV/...

KST...BV/... plugs with locking feature and are for crimping onto highly flexible copper conductor with cross sections of 50 mm<sup>2</sup> to 400 mm<sup>2</sup>. Used with a panel receptacle it acts as an appliance coupler and with a plug as a connecting coupler. Color marking is accomplished with pressure-sensitive tape.



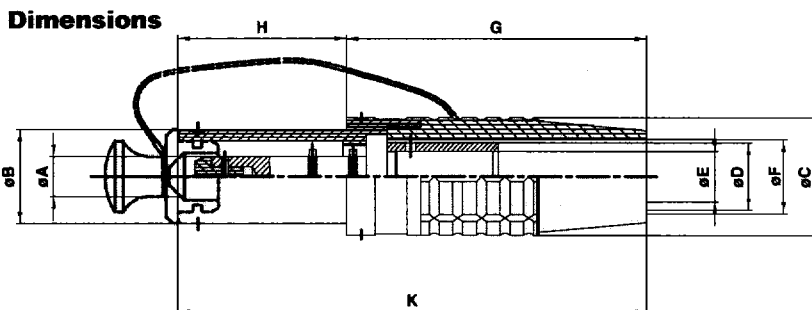
Protective caps see page 410.

Available as individual parts.

**Notice:** The 16 mm dia. version is no longer available. Please see new replacement part KST16BV-N/..., on page 399.

Type	Part #	Conductor cross-section copper	Nominal dia. pin/socket	Withdrawal force	Insertion force	Weight	Rated current (80°C)	Rated voltage <sup>2</sup>	Contact resistance	Short-circuit current 1 s	Short-circuit current 3 s	Surge current	Test voltage 50 Hz 1 min <sup>2</sup>
		mm <sup>2</sup>	mm	N	N				μΩ	kA	kA	kA	kV
KST12BV/50	15.0031	50	12	40	45	0.173	200	1000	40	5.5	3.0	25	3
KST12BV/70	15.0032	70	12	40	45	0.171	250	1000	40	7.0	5.0	25	3
KST12BV/95	15.0033	95	12	40	45	0.170	280	1000	40	7.5	5.5	25	3
KST22BV/150	15.0086	150	22	80	100	0.700	390	1000	10	18.0	8.0	100	3
KST22BV/185	15.0087	185	22	80	100	0.700	450	1000	10	23.0	10.0	110	3
KST22BV/240	15.0088	240	22	80	100	0.700	530	1000	10	29.0	18.0	110	3
KST30BV/240	15.0051	240	30	120	130	1.415	520	1000	9	29.0	18.0	120	3
KST30BV/300	15.0052	300	30	120	130	1.415	600	1000	9	39.0	29.0	150	3
KST30BV/400	15.0053	400	30	120	130	1.415	750	1000	9	39.0	29.0	150	3
<b>Dimensions</b>		<b>A</b>	<b>B</b>	<b>C</b>	<b>D</b>	<b>E</b>	<b>F</b>	<b>G</b>	<b>H</b>	<b>K</b>			
KST12BV/50	15.0031	12	28	35	14.5	11	15.5	89	50	139			
KST12BV/70	15.0032	12	28	35	17	13	19	89	50	139			
KST12BV/95	15.0033	12	28	35	20	15	22	89	50	139			
KST22BV/150	15.0086	22	44	55	25	19	32	122	87	200			
KST22BV/185	15.0087	22	44	55	27	21	35	122	87	200			
KST22BV/240	15.0088	22	44	55	30	24	38.5	122	87	200			
KST30BV/240	15.0051	30	59	69	30	24	35	142	100	242			
KST30BV/300	15.0052	30	59	69	32	26	38	142	100	242			
KST30BV/400	15.0053	30	59	69	36	30	43	142	100	242			

Colors: 20 - 29 Please specify



2) In mated condition only.

20 - green/yellow 21 - black 22 - red 23 - blue 24 - yellow 25 - green 26 - violet 27 - brown 28 - gray 29 - white 33 - transparent